

Expanding Career Opportunities in **ALLIED HEALTH** at



College of the Mainland®



Physical Therapy Aide, EKG, CNA

See pages 8 – 11.

Continuing Education
Lifelong Learning *for Everyone*
Fall 2014 Schedule

Look inside for more opportunities:

Workforce Programs

Bridge to Credit

Professional Development

Fitness and Recreation

Senior Adult Program

1200 Amburn Road Texas City, Texas • 409-933-8586 • www.com.edu/ce

COM CE: LIFELONG LEARNING FOR EVERYONE

COM's Continuing Education division provides access to innovative, flexible and responsive lifelong learning opportunities. Whether you desire to acquire new workforce skills, upgrade current skills or seek personal enrichment, we offer something for you.

We offer career training and certification courses and programs that allow you to acquire the skills needed to enter entry-level positions.

We offer courses that will help you upgrade your current skills and expand your knowledge as you seek to advance in your career.

We also offer professional development courses needed for continued certification in your chosen profession.

And we offer many courses that may pique your interest in a new hobby, improve your fitness or enhance your knowledge of topics that are of special interest to you.

Let us help you continue your education throughout life!

COM Continuing Education
Lifelong Learning for Everyone

www.com.edu/ce
409-933-8586
ContEd@com.edu

CONTINUING EDUCATION'S MISSION

College of the Mainland's Continuing Education division is dedicated to providing workforce development training programs, customized corporate training and lifelong learning opportunities that are innovative, flexible and responsive to the needs of the diverse communities we serve.

CONTINUING EDUCATION'S VISION

College of the Mainland's Continuing Education division will be a vital community partner by providing training opportunities that prepare students for high-growth jobs in the future, offer educational pathways for new and incumbent workers and support continued personal and professional development.

HOW TO CONTACT US

The Continuing Education office is located in the Technical-Vocational Building, Room TVB-1475, on the main campus.
Phone: 409-933-8586 • Fax: 409-933-8026
Mail: Continuing Education, 1200 Amburn Rd., Texas City, TX 77591
Email: ContEd@com.edu

CONTINUING EDUCATION OFFICE HOURS

Open: Monday through Friday, 8 a.m. – 5 p.m.

CE SCHEDULE DISCLAIMER

This schedule is for informational purposes and is subject to change. Changes subsequent to the issuance of the printed schedule will be posted online at www.com.edu/ceschedule. The electronic version of the schedule is the official schedule. Please refer to the online schedule for changes/updates.

QUESTIONS?

Call 409-933-8586 to register or to generally inquire about COM Continuing Education Department courses or programs.

For specific course or program information, please call:

- 409-933-8285 Public Service Careers
- 409-933-8226 Senior Adult Program
- 281-332-1800 COM Learning Center-Allied Health
- 409-933-8162 Gulf Coast Safety Institute
- 409-933-8406 Industrial Crafts

For any questions about programs or courses, call 409-933-8586. The CE office staff will be happy to assist you or direct your call to the appropriate department.

REGISTRATION IS EASY

FALL 2014 REGISTRATION FOR ALL CE AND SENIOR ADULT PROGRAM COURSES BEGINS AUG. 4, 2014.

Continuing Education registration continues throughout the semester until classes are filled. Please register at least one week prior to class start date.

Registration form available online at www.com.edu/ce and in the printed CE Schedule.

Have you previously taken classes at COM?



REGISTER ONLINE

WWW.COM.EDU/CE

- Click Register Now.
- Follow instructions for Continuing Education students.
- Available 24/7.
- Questions about online registration? Click on the HELPDESK arrow located on the WebAdvisor main menu (bottom left) and fill out the form.

New to COM?



CALL

CONTINUING EDUCATION OFFICE

409-933-8586 or 1-888-258-8859, ext. 8586

Open:

Monday - Friday 8 a.m. – 5 p.m.

Leave message after hours.



PERSONAL

Continuing Education Office, Technical Vocational Building, Room T-1475. Tuition and fees must be paid upon registration. Credit and debit cards are accepted.

Open:

Monday–Friday, 8 a.m.–5 p.m.

Payment by cash or check will be processed by the Office of Admissions and Records in the Enrollment Center/Administration Building. Open Monday and Tuesday, 8 a.m.–7 p.m., Wednesday–Friday, 8 a.m.–5 p.m.



MAIL

COM Admissions

1200 Amburn Rd., Texas City, TX 77591-2499

Registration must arrive five days prior to the start date of the class. Include completed registration form and payment (check or money order) for tuition and fees.

PAYMENT OF FEES AND TUITION

All tuition and fees must be paid at the time of registration. We accept cash, check, VISA, MasterCard, Discover, American Express and money orders.



SENIOR ADULT (55+ DISCOUNT)

Senior citizens, age 55 or older, pay just 50 percent of the tuition on selected classes, plus all fees (facility, nonresident, online, supplies, etc.)

A NON-RESIDENT OF COM DISTRICT

A nonresident of the College of the Mainland district shall be subject to out-of-district fees. To be a legal resident of the COM district, you must reside in one of the following school districts: La Marque, Texas City, Dickinson (including San Leon and Bacliff but not including Seabrook or Kemah), Hitchcock and Santa Fe (including Algoa, Arcadia and Alta Loma).

BOOKS AND SUPPLIES

If books and supplies are required, they are not included in the tuition cost unless indicated in the course description. Some courses require the purchase of special books or equipment. Some courses require a supply fee payable at the first class, or a supply list will be provided at the time of registration or at the first class meeting. Books and supplies are usually available at the COM Bookstore or by ordering online at www.combookstore.com.

CLASS CANCELLATIONS

Classes with insufficient enrollment are canceled prior to the start date of the class. Students will be notified by phone when a class is canceled; however, occasionally we are unable to reach a student before the first class meeting. A 100 percent refund will be processed automatically. Help avoid class cancellations by registering at least five days prior to the course start date.

REFUND POLICY

Refunds for Continuing Education tuition and fees will be 100 percent refunded before the first day of class. Refund requests may be made in person, by phone (409-933-8586) or by fax (409-933-8026). Refund requests must be received during normal business hours at least one business day prior to the calendar start date of the class. When a class is canceled by the College, the student will receive an automatic 100 percent refund of tuition and fees.

CLASS TRANSFERS

Students may request to transfer to a different class or section prior to the first class of the course for which the student is registered. One hundred percent of tuition already paid will be applied to the new course(s). Any additional tuition that is due must be paid when the transfer is processed.

MINIMUM AGE REQUIREMENTS

Although some Continuing Education courses are specifically designed for younger students or for a specific education level, the majority of CE classes are designed to serve adult learners. Any adult 18 years of age or older, or an individual between the ages of 16 and 18 who has officially withdrawn from high school, is eligible to enroll in CE courses. Select courses may require students to be at least 21 years old. High school students, 16 years of age or older, are permitted to enroll under the COM concurrent enrollment policy with approval from appropriate public school officials. Students who are 13-14 years old may be given permission to enroll in CE courses that are not funded by the state, provided that a legal guardian enrolls in the same class and attends all classes with the student.

SENIOR ADULT PROGRAM (55+)

Courses designed specifically for students 55 years of age or older are located in the Senior Adult Program section of this schedule.

AUDITING

Continuing Education classes may not be audited.

RECORD OF ACHIEVEMENT: CEU

Continuing Education Units (CEUs) are nationally recognized to record satisfactory completion of certain approved occupation-related programs. One CEU is awarded for every 10 contact hours of instruction included in a specified Continuing Education class or activity. Successful completion is attendance-based unless otherwise noted. Ninety percent attendance is required for successful completion of most classes. Some classes require 100 percent attendance. A COM Continuing Education Program CEU transcript may be requested from the registrar's office at no charge. Reprints of CE certificates are available for \$5.

ARE YOU AGE 55 OR OLDER?

We have classes just for you!

COM SENIOR ADULT PROGRAM

- Enroll in Senior Adult Program classes – with over 40 options – at a nominal cost.
- Join reasonably priced Senior Adult Program trips.
- Enroll in free or low-cost workshops for senior adults.
- Receive a discount on COM Gym fitness memberships.
- Use the COM Library.
- Receive a discount on COM Cosmetology Services.
Call 409-933-8480 for more information.
- Enjoy a discount on COM Community Theatre productions.
Call 409-933-8345 for more information.

For more information see page 37 of this schedule,
or call 409-933-8226.

FINANCIAL ASSISTANCE

TEXAS PUBLIC EDUCATION GRANTS

Grants are available, based on need, to individuals who want to take occupation-related courses. Grants may be used for tuition only. TPEG-eligible programs are identified on page 6. Applications for TPEG assistance should be submitted at least two weeks before the class start date. Applicants must complete the FAFSA, the COM Financial Aid Application and the TPEG Noncredit Application.

Contact the Student Financial Services Office, 409-933-8274 or 1-888-258-8859, ext. 8274, for more information.

THE HAZLEWOOD ACT/LEGACY PROGRAM

College of the Mainland may waive tuition and fees for Texas veterans, and their spouses and eligible children, who are no longer eligible under VA education benefits, were honorably discharged from the military after serving at least 180 days, entered the service with Texas as their home of record and have resided in Texas for at least 12 months prior to their registration date. Application procedures are as follows: The veteran/eligible spouse or child must provide proof of eligibility or ineligibility for GI/Montgomery benefits (Chapter 31, 33/Post 911) by requesting an education benefits letter from the VA office in Muskogee, Ok., at 888-442-4551 or www.gibill.va.gov, provide a copy of the DD-214 and submit the appropriate Hazlewood Application (HE-V) and/or (HE-D) and required documentation to the Student Financial Aid/Veteran Affairs Office. Visit www.com.edu, select Student Financial Services for more information or contact the Student Financial Services/Veteran Affairs Office at 409-933-8274 or 1-888-258-8859, ext. 8274.

WORKFORCE INVESTMENT ACT (WIA)

College of the Mainland is an approved vendor of the Gulf Coast Workforce Development Board and Houston-Galveston Area Council to provide vocational training for eligible participants in workforce programs under the federally funded Workforce Investment Act (WIA). Participants qualifying for programs funded under WIA receive free tuition, fees, books and possibly uniforms, tools and financial assistance with transportation and child care. Applicants may apply for services under the WIA through their local Gulf Coast Careers office. Currently approved programs include Machinist, Mechanical Maintenance Technician and Welding Programs. For more information on WIA, contact Sandra Zavala at 409-933-8406.

A Word About Waiting to Register...

Each class has a minimum enrollment. Once that minimum is reached, the class has "made." Find a class you like, and encourage a friend to join you! Sometimes two or three people can make a difference between having a course "make" or be canceled.

GENERAL INFORMATION

COLLEGE CALENDAR

In accordance with the approved College calendar, the College will be closed on the following dates:

- Sep. 1 Labor Day
- Nov. 27–30 COM Closed for Thanksgiving Holidays
- Dec. 18–Jan. 4 COM Closed for Winter Break

PARKING

Permits are not required. However, permits are now available, as a courtesy, from the campus police office. Regular patrols enforce the following parking regulations:

1. Parking in a “no parking zone”
2. Backing into a parking space
3. Failure to park within marked spaces
4. Driving against the flow of traffic
5. Unauthorized parking in handicap spaces
6. Driving/parking on nonroadways (i.e., sidewalks and grass).

TOBACCO-FREE ENVIRONMENT

All College of the Mainland campuses are tobacco-free facilities. In addition, COM has a zero tolerance policy for alcohol on campus.

STUDENT RECORD PRIVACY POLICY

College of the Mainland complies with the provisions of the Family Educational Rights and Privacy Act (Buckley Amendment of 1974, Public Law 90-247, as amended) and any regulations that may be promulgated therein. The College permits a student to inspect his or her own records and limits disclosure to others if a student has not granted access by prior written consent. No student record, demographics or schedule information will be shared with anyone over the phone or to any third party.

ABBREVIATIONS USED IN THIS SCHEDULE

ADM	Administration and Enrollment Center
AHC	Allied Health Center-League City
AUD	Industrial Education Building
CE	Continuing Education
CLC	North County Learning Center-League City
COM	College of the Mainland
FAB	Fine Arts Building
FIR	Firing Range
GCSI	Gulf Coast Safety Institute
LMCR	COM Learning Center-Delmar
LRC	Learning Resources Center (Library)
PSC	Public Service Careers Building
SC	Student Center
SCI	Science/Math Building
SYN	Synonym-unique identifying number
TBA	To Be Announced
TVB	Technical Vocational Building
CL	Face-to-face classroom course
IN	Internet (online) course
HY	Hybrid course (50-85 percent online and 15 to 50 percent in the classroom)
WE	Web-enhanced (some assignments online)

INTERNET OR HYBRID CLASSES

Students enrolling in Internet (IN) courses will be charged a \$35 distance education fee per course; students enrolling in hybrid (HY) courses will be charged a \$25 distance education fee per course. All students enrolled in Internet or hybrid classes for the first time are required to successfully complete the Online Learner Workshop.

BACTERIAL MENINGITIS VACCINATION REQUIREMENT

CE students will be required to show proof of having the bacterial meningitis vaccine if they are younger than 22 years old and enrolling in CE courses or programs with 360 hours or more. Proof of the vaccination must be provided to the Office of Admissions and Records ten days before the first day of class. Visit www.com.edu/admissions/meningitis-vaccinations.php or stop by the Enrollment Center for more information.

ONLINE LEARNER WORKSHOP-OHRS

All students enrolled in Internet or hybrid classes for the first time at College of the Mainland are required to successfully complete the Blackboard Online Learner Workshop prior to the start date of the course. The Online Learner Workshop is an introduction to the Blackboard Learning Management System. Blackboard is where your online courses are hosted. By completing the Online Learner Workshop you will gain the skills necessary to succeed in your online course. Access instructions can be found at <http://www.com.edu/de/olw.cfm>. Contact the CE Department at 409-933-8586 to register for a workshop.

TAX CREDIT

Continuing education tuition is not recognized the same as credit tuition and cannot be reported on a 1098T form. The IRS does allow a tax credit for tuition, fees and books for CE courses relating to workforce training and improving job skills but does not allow the credit for hobby and other general lifelong-learning courses. To claim the credit on your taxes, save a copy of your registration and bookstore receipts and complete IRS form 8863 with your tax return.

Table of Contents

<i>Course</i>	<i>Page Number</i>
CUSTOMIZED TRAINING	7
WORKFORCE PROGRAMS	8
BRIDGE TO CREDIT	12
PROFESSIONAL DEVELOPMENT	30
GULF COAST SAFETY INSTITUTE	32
FITNESS AND RECREATION	35
SENIOR ADULT PROGRAM	37

CE WORKFORCE PROGRAMS

information subject to change

Possible Financial Aid Sources

	HOURS	FOUND ON PAGE	TPEG	HAZLEWD	WIA
ALLIED HEALTH CAREERS					
CERTIFIED NURSE AIDE	105	8	◆	◆	
DENTAL ASSISTANT	100	9	◆		
ECG TECHNICIAN	63	9	◆	◆	
MEDICAL BILLING AND CODING SPECIALIST	114	9	◆	◆	
MEDICATION AIDE	140	10	◆	◆	
PATIENT CARE TECHNICIAN	48	11	◆	◆	
PHLEBOTOMY TECHNICIAN	118	10	◆	◆	
PHYSICAL THERAPY AIDE	80	10	◆	◆	
BUSINESS AND COMPUTER TECHNOLOGY CAREERS					
ADMINISTRATIVE SUPPORT	432	12		◆	
COMPUTER AIDED DRAFTING	384	14		◆	
GRAPHIC DESIGN	480	14		◆	
ENTREPRENEURSHIP	400	13		◆	
MANAGEMENT	400	13		◆	
MARKETING	400	13		◆	
PROFESSIONAL BOOKKEEPER	336	12		◆	
REAL ESTATE	180	20		◆	
SQL SERVER DATABASE FUNDAMENTALS	192	14		◆	
SQL SERVER IMPLEMENTATION & MAINTENANCE	144	14		◆	
INDUSTRIAL/TRADES CAREERS					
AC/HEATING (LEVELS I, II, III)	250	22	◆	◆	◆
MACHINIST	319	25	◆	◆	◆
MECHANICAL MAINTENANCE TECHNICIAN, BASIC	365	23	◆	◆	◆
MECHANICAL MAINTENANCE TECHNICIAN, INTERMEDIATE	260	24	◆	◆	◆
MECHANICAL MAINTENANCE TECHNICIAN, ADVANCED	195	24	◆	◆	◆
WELDING TECHNOLOGIES	VARIES	15, 25	◆	◆	◆
PUBLIC SERVICE CAREERS					
SECURITY OFFICER	40	27	◆	◆	

BACTERIAL MENINGITIS VACCINATION REQUIREMENT

CE students will be required to show proof of having the bacterial meningitis vaccine if you are younger than 22 years old and enrolling in CE courses or programs with 360 hours or more. Proof of the vaccination must be provided to Admissions 10 days before the first day of class. Visit www.com.edu/admissions/meningitis-vaccinations.php or go by the Enrollment Center or Continuing Education Office for more information.

FINANCIAL AID INFORMATION

See page 4 for more information about possible financial aid sources.

Customized Training

COM's Continuing Education Department can work with your company to design specific training to meet your needs. Whether employees need leadership or welding skills, expertise in email communication or training in workplace ESL, the Continuing Education Department can create a customized course. We also offer a wide variety of professional development courses designed for industry members to learn specific skills. In addition, Workforce training courses prepare those who desire to enter the industry, and personal enrichment courses offer an opportunity to broaden students' horizons with new skills and discoveries. Continuing Education courses provided training and enrichment to more than 7,500 students in 2010-11.

PREVIOUSLY DEVELOPED CUSTOMIZED TRAININGS		STANDARDIZED COURSES
BUSINESS <ul style="list-style-type: none"> • Safety and Health • First Line Leadership Training • Shift Superintendent Training • Industrial Safety • Computer Training • Project Management • Presentation Skills • Six Sigma • Problem Solving • Business Communication • Train the Trainer • Facilities Rental and Food Service • Skills Development Grants for Business Training • Vocational ESL • CPR Training • Quality Customer Service • Team Building • How to Deal with Difficult Customers 	INDUSTRIAL <ul style="list-style-type: none"> • Microsoft Office Training • I&E Motor Control Training • I&E Level Control Training • I&E Control Valve Training • Pump Systems Operation • Reaction Process Training • Distillation Process Training • Process Troubleshooting • Plant Start-Up and Operations Training • Specialty Welding Training • Storage Tank Emissions • Welding Skills Upgrade • Hands-On Skills Testing • BP Craft Apprenticeship Programs • Electrical Apprenticeship Program • TCEQ Basic Equipment Training • Machinist • Mechanical Maintenance 	<ul style="list-style-type: none"> • HVAC • Electrical • Welding • Process Technology • Machinist • Mechanical Maintenance • High School Craft Offerings • Certified Nursing Assistant • ECG Technician • Medical Billing and Coding • Medication Aid • Phlebotomy Technician • Emergency Medical Technician • Administrative Assistant • Real Estate Agent • Dental Assistant • Police Academy • Security Officer

CE Registration Date

Registration begins Aug. 4, 2014,
for Fall 2014 Continuing Education
and
Senior Adult Program classes.

Save This Schedule

CE offers hundreds of classes.
One is just right for you!

WORKFORCE PROGRAMS

ALLIED HEALTH CAREERS

Allied health classes are offered at the Texas City main campus as well as the COM Learning Center-Allied Health, located at 200 Parker Ct. on FM 518 in League City. Applications for allied health certificate programs are available at the League City Office and online at www.com.edu/ce_alliedhealth. Completed applications must be returned to the League City office.

CERTIFIED NURSE AIDE CERTIFICATE

An application is required prior to registration.

Contact Nichole Sullivan at 409-933-8645 for details and approval.

A vital part of the health care field, certified nurse aides provide compassionate basic care for patients. This program trains nurse aides to work in hospitals and long-term care facilities. Between 2010-2020, the need for certified nurse aides is projected to grow by 20 percent. The mean hourly wage for certified nurse aides is \$11.54. (Source: Bureau of Labor Statistics)

Course #	Title	Hrs	Fast Track Hrs
NURA 1001	Nurse Aide for Health Care I This course prepares entry-level nursing assistants to achieve the knowledge, skills and abilities needed to provide basic care to hospital patients and residents of long-term care facilities. Students must enroll concurrently in Nurse Aide Clinicals (NURA-1060) to complete the Certified Nursing Assistant (CNA) Program.	65	90
NURA 1060	Nurse Aide for Health Care II Clinical experiences are unpaid, external learning experiences. Students must enroll concurrently in Nurse Aide for Health Care I (NURA-1001) to complete the COM Certified Nursing Assistant Program. Tuition includes malpractice insurance.	40	40
TOTAL HOURS		105	130

State certification: Students successfully completing these courses will be prepared to take the state exam, Certified Nursing Assistant. Students will also complete the Healthcare Provider CPR certification.

NURSE AIDE FOR HEALTH CARE I (FAST TRACK) – 90 HRS

Cost:	In district: \$640	Out of district: \$645
SYN: 7545 NURA-1001-103CL	09/08/14-09/26/14	
MTWTHF 09:00AM-04:00PM	AHC 102	T Dickerson
Student must concurrently enroll in SYN: 7546 NURA-1060-104CL.		
SYN: 7549 NURA-1001-104CL	10/06/14-10/24/14	
MTWTHF 09:00AM-04:00PM	AHC 102	T Dickerson
Student must concurrently enroll in SYN: 7550 NURA-1060-105CL.		
SYN: 7551 NURA-1001-106CL	11/03/14-11/21/14	
MTWTHF 09:00AM-04:00PM	AHC 102	T Dickerson
Student must concurrently enroll in SYN: 7552 NURA-1060-107CL.		

NURSE AIDE FOR HEALTH CARE II (FAST TRACK) – 40 HRS

Tuition includes malpractice insurance (\$16) and the ID badge fee (\$6).

Cost:	In district: \$220	Out of district: \$225
SYN: 7546 NURA-1060-104CL	09/23/14-09/29/14	
MTWTHF 06:00AM-02:00PM	TBA	T Dickerson
Students must concurrently enroll in SYN: 7545 NURA-1001-103CL.		
SYN: 7550 NURA-1060-105CL	10/21/14-10/27/14	
MTWTHF 06:00AM-02:00PM	TBA	T Dickerson
Students must concurrently enroll in SYN: 7549 NURA-1001-105CL.		
SYN: 7552 NURA-1060-107CL	11/18/14-11/24/14	
MTWTHF 06:00AM-02:00PM	TBA	T Dickerson
Students must concurrently enroll in SYN: 7551 NURA-1001-106CL.		

NURSE AIDE FOR HEALTH CARE I – 65 HRS

Cost:	In district: \$530	Out of district: \$535
SYN: 7846 NURA-1001-203CL	09/08/14-10/29/14	
MW 05:00PM-09:00PM	AHC 104	J Urps
Student must concurrently enroll in SYN: 7848 NURA-1060-204CL.		
SYN: 7547 NURA-1001-201CL	10/14/14-12/09/14	
TTH 06:00PM-10:00PM	TVB 1135	C Nelson
Student must concurrently enroll in SYN: 7548 NURA-1060-202CL.		

NURSE AIDE FOR HEALTH CARE II – 40 HRS

Tuition includes malpractice insurance (\$16) and the ID badge fee (\$6).

Cost:	In district: \$220	Out of district: \$225
SYN: 7848 NURA-1060-204CL	10/04/14-11/11/14	
S 06:00AM-02:00PM	TBA	J Urps
Students must concurrently enroll in SYN: 7846 NURA-1001-203CL.		
SYN: 7548 NURA-1060-202CL	11/01/14-12/06/14	
S 06:00AM-02:00PM	TBA	C Nelson
Students must concurrently enroll in SYN: 7547 NURA-1001-201CL.		

DENTAL ASSISTANT CERTIFICATE

An application is required prior to registration.

Contact Nichole Sullivan at 409-933-8645 for details and approval.

Through hands-on labs and classes, this program trains students for employment as dental assistants, a rapidly growing branch of the health care field. Dental assistants perform a variety of tasks in dental offices, from patient care to record keeping. Between 2010-2020, the need for dental assistants is projected to grow 31 percent. The mean hourly wage for dental assistant is \$16.09. (Source: Bureau of Labor Statistics)

Course #	Title	Hrs
DNTA 1060	Dental Assistant The Dental Assistant Program prepares students for entry-level positions in one of the fastest-growing health care professions. The course will cover key areas and expose the student to both classroom and hands-on lab instruction. This course prepares the student to take the state of Texas Registered Dental Assistant Exam.	100

State certification: Students successfully completing these courses will be prepared to take the state of Texas Registered Dental Assistant Exam.

DENTAL ASSISTANT – 100 HRS

Training includes 16 hours of clinical experience, which will be scheduled with the instructor on Saturdays from 9 a.m. to noon at a local dentist's office. Tuition includes malpractice insurance (\$16), the ID badge fee (\$6), the clinical fee (\$50), and CPR certification training.

Cost: In district: \$650 Out of district: \$655

SYN: 7534 DNTA-1060-203CL 09/08/14-12/10/14

MW 06:00PM-09:00PM AHC 102 M Tull

ELECTROCARDIOGRAPHY TECHNICIAN CERTIFICATE

An application is required prior to registration.

Contact Nichole Sullivan at 409-933-8645 for details and approval.

This program trains students to become ECG technicians, a key part of the medical team. ECG technicians prepare patients for ECGs by attaching electrodes to a patient's arms, legs and chest. They also operate ECG machines while monitoring, interpreting and documenting patients' results, and they maintain and troubleshoot technical problems with the ECG machines. ECG technicians work in health clinics, hospitals, medical offices and laboratories. Between 2010-2020, the need for ECG technicians is projected to grow 29 percent. The mean hourly wage for ECG technicians is \$23.75. (Source: Bureau of Labor Statistics)

Course #	Title	Hrs
ECRD 1011	Electrocardiography Technician and Telemetry Monitoring Technician This introductory course is designed to teach the fundamentals of cardiovascular anatomy and physiology. Topics include basic electrocardiography procedures, interpretation of basic dysrhythmias and appropriate treatment modalities. Additional topics will include an understanding of the heart, the implications of decreased cardiac output and its application in interpreting electrical activity. It also emphasizes the recognition of common and potentially "lethal" dysrhythmias.	63

National certification: Students successfully completing these courses will be prepared to take the National Healthcareer Association exam to become a certified ECG technician.

ELECTROCARDIOGRAPHY AND TELEMETRY MONITORING TECHNICIAN – 63 HRS

Tuition includes a testing fee (\$161) (includes study guide and five practice test attempts) and malpractice insurance (\$16).

Cost: In district: \$500 Out of district: \$505

SYN: 7535 ECRD-1011-103CL 09/02/14-11/11/14

TTH 09:00AM-12:00PM AHC 104 T McGilberry

MEDICAL BILLING AND CODING SPECIALIST CERTIFICATE

No application is necessary.

Prerequisite: A high school diploma or GED

Students in this program train for careers as medical billing and coding specialists, a rapidly growing branch of health care. Medical billing and coding specialists use various classification systems to code and categorize patient information, which is vital for reimbursement purposes and to maintain patients' medical and treatment histories. Between 2010-2020, the need for these specialists is projected to grow 21 percent. The mean hourly wage for medical billing and coding specialists is \$15.55. (Source: Bureau of Labor Statistics)

Course #	Title	Hrs
HITT 2035	Coding and Reimbursement Methodologies Students will learn beginning and advanced coding techniques with an emphasis on case studies, health records and federal regulations regarding prospective payment systems and methods of reimbursement.	72
HITT 2021	Electronic Medical Records This course provides an overview of learning management systems, instrumental design software tools, teaching techniques and strategies evaluation of learner competencies, maintenance of training records and measurement of training programs.	42

TOTAL HOURS 114

National certification: Students successfully completing these courses will be prepared to take the national exams, Medical Billing and Coding with National Healthcareer Association and the Electronic Medical Records Certification Exam with the National Healthcareer Association.

CODING AND REIMBURSEMENT METHODOLOGIES – 72 HRS

Tuition includes a \$161 testing fee (includes study guide and five practice test attempts).

Cost: In district: \$550 Out of district: \$555

SYN: 7541 HITT-2035-205CL 09/15/14-11/12/14

MW 06:00PM-10:00PM CLC 111 A Corrales-Farek

SYN: 7540 HITT-2035-105CL 09/16/14-11/13/14

TTH 01:00PM-05:00PM CLC 111 M Cooper

SYN: 7542 HITT-2035-206CL 10/07/14-12/09/14

TTH 06:00PM-10:00PM CLC 112 A Corrales-Farek

ELECTRONIC MEDICAL RECORDS – 42 HRS

Tuition includes a \$161 testing fee (includes study guide and five practice test attempts).

Cost: In district: \$350 Out of district: \$355

SYN: 7543 HITT-2021-206CL 10/21/14-12/09/14

TTH 06:00PM-09:00PM CLC 111 M Cooper

MEDICATION AIDE CERTIFICATE

An application is required prior to registration.

Contact Nichole Sullivan at 409-933-8645 for details and approval.

Prerequisite: Must be a CNA or have 90 days unlicensed direct care experience in a DADs facility.

Medication aides serve an essential role in hospitals and long-term care facilities by helping distribute medications and monitor for adverse reactions. This program prepares students to take the state Medication Aide Certification Examination, and it adheres to the regulations and curriculum established by the Department of Aging and Disability Services. Between 2010-2020, the need for medication aides is projected to grow by 20 percent. The mean hourly wage for medication aides is \$11.54. (Source: Bureau of Labor Statistics)

Course #	Title	Hrs
NURA 1013	Medication Aide	140
	In this class students learn how to prepare and administer designated medications by nonlicensed nursing personnel employed in licensed health care agencies. They also learn the responsibilities with medication administration.	

State certification: Students successfully completing these courses will be prepared to take the state exam, Medication Aide Certification Examination.

MEDICATION AIDE – 140 HRS

Training includes 40 hours of lab and clinical experience, which will be scheduled with the instructor on Tuesdays from 6-10 p.m. in an approved facility. Tuition includes malpractice insurance (\$16), an ID badge fee (\$6) and CPR certification training.

Cost:	In district: \$980	Out of district: \$985
SYN:	7556 NURA-1013-204CL	09/08/14-12/03/14
MTW	06:00PM-10:00PM	AHC 103 R McAninch

PHLEBOTOMY TECHNICIAN CERTIFICATE

An application is required prior to registration.

Contact Nichole Sullivan at 409-933-8645 for details and approval.

Prerequisite: A high school diploma or GED

A rapidly growing occupation in the health care field, phlebotomists draw blood for tests, transfusions, research or blood donations. COM trains phlebotomy technicians in the safest methods of drawing blood with as little patient discomfort as possible. They find employment in hospitals, doctor's offices, medical and diagnostic laboratories and blood donor centers. Between 2010-2020, the need for phlebotomy technicians is projected to grow 13 percent. The mean hourly wage for phlebotomy technicians is \$22.44. (Source: Bureau of Labor Statistics)

Course #	Title	Hrs
PLAB 1023	Phlebotomy Technician	118
	This course is designed to introduce students to basic knowledge and skills of the phlebotomy profession. Students will learn various types of blood collections utilizing the proper techniques and universal precautions. On completion of the course, a National Healthcareer Association CPT exam will be administered. The required textbook is available in the COM Bookstore.	

National certification: Students successfully completing these courses will be prepared to take the national exam given by National Healthcareer Association (NHA).

PHLEBOTOMY TECHNICIAN – 118 HRS

Class hours include 16 hours of lab experience, which will be scheduled with the instructor during the first week of class. Tuition includes malpractice insurance (\$16), a testing fee (\$161) (includes study guide and five practice test attempts) and CPR certification training.

Cost:	In district: \$1200	Out of district: \$1205
SYN:	7558 PLAB-1023-103CL	09/16/14-12/04/14
TTH	01:00PM-05:00PM	AHC 104 T McGilberry

PHYSICAL THERAPY AIDE CERTIFICATE

An application is required prior to registration.

Contact Nichole Sullivan at 409-933-8645 for details and approval.

This new program trains physical therapy aides to work closely with a physical therapist and to perform duties including preparing the patient and the treatment area. The program serves as an introduction to the field for those who want to continue their education to become physical therapy assistants and for certified nurse assistants who want to expand their skills to work in restorative care. A rapidly growing field, physical therapy aides find employment in hospitals, doctor's offices, skilled nursing care facilities and physical therapy treatment centers. The median pay is \$11.48. (Source: Bureau of Labor Statistics)

Course #	Title	Hrs
PTHA 1009	Introduction to Physical Therapy	80
	Students will be introduced to the profession of physical therapy and the role of the physical therapist assistant. Topics to be covered include the application of basic patient care, functional skills, communication and selected data collection techniques.	

Students successfully completing these courses will be issued a certificate of completion from College of the Mainland.

PHYSICAL THERAPY, INTRODUCTION – 80 HRS

Training includes eight hours of lab experience, which will be scheduled with the instructor on two Saturdays. Tuition includes CPR certification training.

Cost:	In district: \$575	Out of district: \$580
SYN:	7559 PTHA-1009-103CL	09/23/14-11/25/14
TTH	06:00PM-10:00PM	CLC 106 A Flores



PATIENT CARE TECHNICIAN CERTIFICATE

Contact Nichole Sullivan at 409-933-8645 for details and approval.

Prerequisite: Must have completed the Certified Nurse Assistant, Phlebotomy and ECG Technician Certificates

This program prepares a student for a job as a patient care technician, who performs a role similar to that of a certified nursing assistant but with greater responsibilities. A key member of the medical team, patient care technicians acquire patient vital signs, gather blood samples, read ECGs and perform patient room safety checks. Between 2010-2020, the need for patient care technicians is projected to grow by 20 percent. (Source: Bureau of Labor Statistics)

Course #	Title	Hrs
NUPC 1020	Patient Care Seminar	48
	Students will be introduced to the training, skills and knowledge needed to gain employment as a patient care technician in a hospital setting. Topics of study include how to assist patients in the acute care setting with activities of daily living, how to measure vital signs, and how to communicate effectively with patients, family members and staff.	

National certification: Students successfully completing these courses will be prepared to take the Patient Care Technician Exam, administered by the National Healthcareer Association.

PATIENT CARE SEMINAR – 48 HRS

Tuition includes testing fee \$205 (includes study guide and five practice test attempts).

Cost:	In district: \$375	Out of district: \$380
SYN: 7544	NUPC-1020-106CL	09/19/14-11/14/14
F	09:00AM-04:00PM	AHC 115 T McGilberry

We're In Your Neighborhood!



The COM Learning Center – North County is located at 200 Parker Ct. in League City.

It offers allied health care programs, allied health professional development courses and day classes of the COM Fast-Track Real Estate Program.

Call 281-332-1800 for more information or visit www.com.edu/nc.

ALLIED HEALTH PROFESSIONAL DEVELOPMENT

HEALTHCARE PROVIDER CPR – 4 HRS

Designed for the health care provider, the course includes one and two-rescuer adult CPR, child CPR, infant CPR, and adult and pediatric foreign body airway obstruction. The American Heart Association strongly promotes knowledge and proficiency in all AHA courses and has developed instructional materials for this purpose. Use of these materials in an educational course does not represent course sponsorship by the AHA. Any fees charged for such a course, except for a portion of fees needed for AHA course materials, do not represent income to the AHA.

Cost:	In district: \$30	Out of district: \$35
SYN: 7536	EMSCE-1003-120CL	09/04/14-09/04/14
TH	05:00PM-09:00PM	CLC 106 M Chatman
SYN: 7537	EMSCE-1003-121CL	10/09/14-10/09/14
TH	05:00PM-09:00PM	CLC 106 M Chatman
SYN: 7538	EMSCE-1003-122CL	10/30/14-10/30/14
TH	05:00PM-09:00PM	CLC 106 M Chatman
SYN: 7539	EMSCE-1003-123CL	12/04/14-12/04/14
TH	05:00PM-09:00PM	CLC 106 M Chatman

MEDICATION AIDE UPDATE – 8 HRS

This course is designed for individuals who hold a medication aide permit and need continuing education as mandated by the Texas Department of Aging and Disability Services. The purpose of this course is to maintain and enhance the competency of permitted medication aides to administer medications as specified in the Health and Safety Code, Chapter 242 Subchapter F and 40 TAC Chapter 25. The instructor will provide course materials.

Cost:	In district: \$65	Out of district: \$70
SYN: 7557	NURA-1041-107CL	10/11/14-10/11/14
S	09:00AM-05:00PM	AHC 103 R McAninch

PROFESSIONAL DEVELOPMENT FOR CERTIFIED NURSE ASSISTANTS – 24 HRS

Professional development for the certified nurse assistant is now required by the Department of Aging and Disability. This course satisfies the 24-hour training requirement relating to geriatrics and the care of patients with Alzheimer's disease per Sec.250.0035(2) of the Nurse Aide Training Code.

Cost:	In district: \$175	Out of district: \$180
SYN: 7553	NURA-2000-108CL	09/09/14-09/25/14
TTH	06:00PM-10:00PM	CLC 106 J Urps
SYN: 7555	NURA-2000-110CL	09/13/14-10/18/14
S	08:00AM-12:00PM	CLC 106 J Urps
SYN: 7554	NURA-2000-109CL	12/01/14-12/10/14
MTW	08:00AM-12:00PM	CLC 107 P Moore

BRIDGE TO CREDIT

Business and Computer Technology Certificates

COM Continuing Education is partnering with the Business and Computer Technology Department to offer workforce courses that lead to entry-level employment and begin a pathway to continued higher education and job advancement. All certificates in this section duplicate credit certificates and upon completion provide a bridge for students to transition from a continuing education student to a degree-seeking student.

Students participating in the certificate programs on pages 12-15 will be enrolled in classes with credit students and are expected to complete all course objectives, take exams and meet attendance requirements. Students will receive a letter grade, which they may later apply toward a credit certificate or associate degree if certain requirements are met.

Upon successful completion of these courses and acceptance to College of the Mainland as a degree-seeking student, students may petition for credit for the courses identified in the certificates. To petition for credit, students must (1) complete at least six hours of college credit courses at College of the Mainland, (2) complete the Petition for Credit Form, which must be signed by the program faculty, appropriate dean, chief academic officer and registrar before credit is granted, and (3) provide documentation showing that the noncredit course is equivalent to a specified credit course that the College offers. Certain fees may apply.

Course descriptions are listed online in the College Catalog, www.com.edu/catalog. Course schedules for these classes are located on page 16-17.

Courses Leading to the Credit Administrative Support Certificate

Course #	Title	CE Contact Hrs	Credit Hr Equivalent
POFT 2001	Intermediate Keyboarding	64	3
BUSIL 1001	Business Principles	48	3
BCISL 1005	Business Computer Applications	64	3
BUSIL 1004	Business Report Writing and Correspondence (Freshman Level Version)	48	3
BMGT 1027	Principles of Management	48	3
ACNT 1003	Introduction to Accounting I	48	3
POFT 1019	Records and Information Management I	64	3
BUSIL 2004	Business Report Writing and Correspondence (Sophomore Level Version)	48	3
	TOTAL HOURS	432	24

Bridge to Credit: Students successfully completing these courses are encouraged to consider completing the Associate of Applied Science in Business Administration with an Emphasis in Office Management

Courses Leading to the Credit Professional Bookkeeper Certificate

Course #	Title	CE Contact Hrs	Credit Hr Equivalent
BCISL 1005	Business Computer Applications	64	3
POFT 1021	Business Math	48	3
ACNT 1003	Introduction to Accounting I	48	3
ACNT 1013	Computerized Accounting Applications	64	3
ACNT 1031	Federal Income Tax: Individual	48	3
ACCTL 2001	Principles of Accounting	64	3
	TOTAL HOURS	336	18

Bridge to Credit: Students successfully completing these courses are encouraged to consider completing the Associate of Applied Science in Business Administration with an Emphasis in Accounting.

Courses Leading to the Credit Entrepreneurship Certificate

Course #	Title	CE Contact Hrs	Credit Hr Equivalent
BUSIL 1001	Business Principles	48	3
BCISL 1005	Business Computer Applications	64	3
BUSIL 1004	Business Report Writing and Correspondence (Freshman Level Version)	48	3
POFT 1021	Business Math	48	3
BUSIL 2004	Business Report Writing and Correspondence (Sophomore Level Version)	48	3
ACNT 1003	Introduction to Accounting I	48	3
MRKG 1011	Principles of Marketing	48	3
BUSG 1015	Small Business Operations	48	3
	TOTAL HOURS	400	24

Bridge to Credit: Students successfully completing these courses are encouraged to consider completing the Associate of Applied Science in Business Administration with an Emphasis in Entrepreneurship.

Courses Leading to the Credit Management Certificate

Course #	Title	CE Contact Hrs	Credit Hr Equivalent
BUSIL 1001	Business Principles	48	3
BCIS 1005	Business Computer Applications	64	3
BUSIL 1004	Business Report Writing and Correspondence (Freshman Level Version)	48	3
POFT 1021	Business Math	48	3
BUSIL 2004	Business Report Writing and Correspondence (Sophomore Level Version)	48	3
ACNT 1003	Introduction to Accounting I	48	3
HRPO 2001	Human Resource Management	48	3
BMGT 1027	Principles of Management	48	3
	TOTAL HOURS	400	24

Bridge to Credit: Students successfully completing these courses are encouraged to consider completing the Associate of Applied Science in Business Administration with an Emphasis in Management.

Courses Leading to the Credit Marketing Certificate

Course #	Title	CE Contact Hrs	Credit Hr Equivalent
BUSIL 1001	Business Principles	48	3
BCISL 1005	Business Computer Applications	64	3
BUSIL 1004	Business Report Writing and Correspondence (Freshman Level Version)	48	3
POFT 1021	Business Math	48	3
BUSIL 2004	Business Report Writing and Correspondence (Sophomore Level Version)	48	3
ACNT 1003	Introduction to Accounting I	48	3
MRKG 1011	Principles of Marketing	48	3
MRKG 1001	Customer Relationship Management	48	3
	TOTAL HOURS	400	24

Bridge to Credit: Students successfully completing these courses are encouraged to consider completion of the Associate of Applied Science in Business Administration with an Emphasis in Marketing.

Courses Leading to the Credit Computer-Aided Drafting Certificate

Course #	Title	CE Contact Hrs	Credit Hr Equivalent
DFTG 1005	Technical Drafting	96	4
DFTG 1009	Basic Computer-Aided Drafting	96	4
DFTG 2019	Intermediate Computer-Aided Drafting	96	4
DFTG 2040	Solid Modeling/Design	96	4
	TOTAL HOURS	384	16

Bridge to Credit: Students successfully completing these courses are encouraged to consider completion of the 2-D/3-D Modeling Certificate and/or Associate of Applied Science in Drafting.

Courses Leading to the Credit Graphic Design Certificate

Course #	Title	CE Contact Hrs	Credit Hr Equivalent
ARTC 1010	Design Concepts	96	3
ARTC 1025	Introduction to Computer Graphics	96	3
ARTC 1005	Basic Graphic Design	96	3
ARTC 1053	Computer Illustration	96	3
ARTC 1002	Digital Imaging I	96	3
	TOTAL HOURS	480	15

Bridge to Credit: Students successfully completing these courses are encouraged to consider completion of the Advanced Web Design Certificate and/or Associate of Applied Science in Graphic Design/Web Design.

Courses Leading to the Credit SQL Server Database Fundamentals Certificate

The SQL Server Database Fundamentals Certificate teaches students the fundamentals of Microsoft SQL Server database administration. This certificate is the first in a sequence of three Microsoft SQL Server certificates offered at College of the Mainland.

Course #	Title	CE Contact Hrs	Credit Hr Equivalent
COSCL 1001	Introduction to Computing	64	3
COSCL 1036	Programming Fundamentals I	64	3
ITSW 1007	Introduction to Database	64	3
ITNW 2052	Administering SQL Server	64	3
	TOTAL HOURS	192	12

National certification: Students successfully completing these courses are prepared to take the Microsoft Technology Associate (MTA) SQL Server Database Fundamentals Certification Exam.

Bridge to Credit: Students successfully completing these courses are encouraged to consider completion of the SQL Server Implementation and Maintenance Certificate and/or the SQL Server Database Development Certificate.

Courses Leading to the Credit SQL Server Implementation and Maintenance Certificate

Prerequisite: Completion of the SQL Server Database Fundamentals Certificate

The SQL Server Database Implementation and Maintenance Certificate provides students with advanced database administration skills. This certificate is the second in a sequence of three Microsoft SQL Server certificates offered at College of the Mainland.

Course #	Title	Hrs	Credit Hr Equivalent
ITSE 2009	Introduction to Database Programming	48	3
ITSE 2033	Implementing a Database on Microsoft SQL Server	48	3
BUSIL 1004	Business Report Writing and Correspondence (Freshman Level)	48	3
	TOTAL HOURS	144	9

National certification: Students successfully completing these courses are prepared to take the Microsoft Technology Associate (MTA) SQL Implementation and Maintenance Certification Exam.

Bridge to Credit: Students successfully completing these courses are encouraged to consider completion of the SQL Server Database Development Certificate.

Courses Leading to the Credit Entry-Level Welding Certificate

COURSE #	TITLE	CE CONTACT HRS	CREDIT HR EQUIVALENT
WLDG 1025	Introduction to Oxy-Fuel Welding and Cutting	160	4
WLDG 1021	Introduction to Welding Fundamentals	160	4
WLDG 1034	Introduction to Gas Tungsten Arc (GTAW) Welding	160	4
WLDG 1030	Introduction to Gas Metal Arc (GMAW) Welding	160	4
WLDG 1057	Intermediate Shielded Arc Welding (SMAW)	160	4
WLDG 1035	Introduction to Pipe Welding	160	4
	TOTAL HOURS	960	24

Bridge to credit: Students successfully completing these courses are encouraged to consider completing the Advanced Level Welding Certificate.

Courses Leading to the Credit Entry-Level Gas Shielded Pipe Welding Certificate

COURSE #	TITLE	CE CONTACT HRS	CREDIT HR EQUIVALENT
WLDG 1021	Introduction to Welding Fundamentals	160	4
WLDG 1030	Introduction to Gas Metal Arc (GMAW) Welding	160	4
WLDG 1034	Introduction to Gas Tungsten Arc (GTAW) Welding	160	4
WLDG 2051	Advanced Gas Tungsten Arc (GTAW) Welding	160	4
WLDG 2013	Welding Multiple Processes	160	4
WLDG 1012	Introduction to Flux Cored Arc (FCAW) Welding	112	4
	TOTAL HOURS	912	24

Bridge to credit: Students successfully completing these courses are encouraged to consider completing the Advanced Level Welding Certificate.

Courses Leading to the Credit Entry-Level Shielded Metal Arc Pipe Welding Certificate

COURSE #	TITLE	CE CONTACT HRS	CREDIT HR EQUIVALENT
WLDG 1025	Introduction to Oxy-Fuel Welding and Cutting	160	4
WLDG 1021	Introduction to Welding Fundamentals	160	4
WLDG 1057	Intermediate Shielded Metal Arc Welding (SMAW)	160	4
WLDG 1035	Introduction to Pipe Welding	160	4
WLDG 2006	Intermediate Pipe Welding	160	4
WLDG 1034	Introduction to Gas Tungsten Arc (GTAW) Welding	160	4
	TOTAL HOURS	960	24

Bridge to credit: Students successfully completing these courses are encouraged to consider completing the Advanced Level Welding Certificate.

www.com.edu/ce

COURSE SCHEDULE FOR BRIDGE TO CREDIT COURSES

All students enrolling in Internet (IN) or hybrid (HY) classes for the first time at College of the Mainland are required to successfully complete the free, two-hour Blackboard Online Learner Workshop prior to the start date of the course. See page 5 of this schedule for registration details. Students will be charged an additional \$25 fee for each hybrid course and a \$35 fee for each Internet course.

BUSINESS AND COMPUTER TECHNOLOGIES

PRINCIPLES OF FINANCIAL ACCOUNTING – 64 HRS

Cost:	In district: \$270	Out of district: \$275
SYN: 6795 ACCTL-2001-101CL	08/25/14-12/13/14	
TTH 09:30AM-10:50AM	TVB 1225	M Williams
SYN: 6793 ACCTL-2001-201CL	08/25/14-12/13/14	
TTH 06:00PM-07:20PM	TVB 1225	COM Faculty
SYN: 6794 ACCTL-2001-201HY	08/25/14-12/13/14	
W 06:00PM-07:20PM	TVB 1225	M Williams
SYN: 6792 ACCTL-2001-001IN	09/01/14-12/13/14	
INTERNET		M Williams

PRINCIPLES OF MANAGERIAL ACCOUNTING – 64 HRS

Cost:	In district: \$270	Out of district: \$275
SYN: 6796 ACCTL-2002-101CL	08/25/14-12/13/14	
TTH 11:00AM-12:20PM	TVB 1225	M Williams
SYN: 6797 ACCTL-2002-102CL	08/25/14-12/13/14	
TTH 04:30PM-05:50PM	TVB 1310	S Rahman

BUSINESS COMPUTER APPLICATIONS – 64 HRS

Cost:	In district: \$270	Out of district: \$275
SYN: 6817 BCISL-1005-001IN	08/25/14-12/13/14	
INTERNET		S Wijesinghe

INTRODUCTION TO COMPUTING – 64 HRS

Cost:	In district: \$270	Out of district: \$275
SYN: 6823 COSCL-1001-001IN	08/25/14-12/13/14	
INTERNET		C Mickens

PROGRAMMING FUNDAMENTALS I – 64 HRS

Cost:	In district: \$270	Out of district: \$275
SYN: 6830 COSCL-1036-101CL	08/25/14-12/13/14	
MW 04:00PM-05:50PM	TVB 1432	J Barber

ALLIED HEALTH

MEDICAL TERMINOLOGY I – 48 HRS (INTERNET)

Cost:	In district: \$270	Out of district: \$275
SYN: 7594 HITT-1005-001IN	08/25/14-12/12/14	
INTERNET		K Frieze
SYN: 7605 HITT-1005-002IN	08/25/14-12/12/14	
INTERNET		K Frieze
SYN: 7606 HITT-1005-003IN	08/25/14-12/12/14	
INTERNET		K Frieze

WELDING CLASSES

Through the Welding Technology Program, COM educates and prepares students with the technical skills required for this career field. The program curriculum is based on properties of metals, metal welding, brazing, flame-cutting, blueprint reading, electrical principles, welding symbols and mechanical drawing. The program includes entry-level skills in stick (SMAW), oxy-acetylene (GAS), gas shield arc (GTAW and MTAW) and flux-cored arc (FCAW) welding. There is a \$200 supply fee per class and a one-time investment of approximately \$150 for personal equipment.

INTRODUCTION TO WELDING FUNDAMENTALS – 160 HRS

Cost:	In district: \$270	Out of district: \$275
SYN: 7599 WLDG-1021-102CL	08/25/14-12/12/14	
F 07:00AM-12:00PM	WLD 010	V Woods
F 12:30PM-05:30PM		
SYN: 7600 WLDG-1021-111CL	08/25/14-12/12/14	
MW 07:00AM-12:00PM	WLD 010	D Miller
SYN: 7601 WLDG-1021-131CL	08/25/14-12/12/14	
TTH 07:00AM-12:00PM	WLD 010	V Woods
SYN: 7609 WLDG-1021-144CL	08/25/14-12/12/14	
TTH 12:30PM-05:30PM	WLD 010	R Brown
SYN: 7610 WLDG-1021-266CL	08/25/14-12/12/14	
MW 05:32PM-10:32PM	WLD 010	R Spivey

INTRODUCTION FLEX CORED ARC WELDING - 160 HRS

Cost:	In district: \$270	Out of district: \$275
SYN: 7646 WLDG-1012-134CL	08/25/14-12/12/14	
MW 12:30PM-05:30PM	WLD 010	R Brown
SYN: 7647 WLDG-1012-277CL	08/25/14-12/12/14	
TTH 05:32PM-10:32PM	WLD 010	R Brown

INTRODUCTION TO OXY-FUEL WELDING AND CUTTING – 160 HRS

Cost:	In district: \$270	Out of district: \$275
SYN: 7602 WLDG-1025-101CL	08/25/14-12/12/14	
F 07:00AM-12:00PM	WLD 010	V Woods
F 12:30PM-05:30PM		
SYN: 7603 WLDG-1025-111CL	08/25/14-12/12/14	
MW 07:00AM-12:00PM	WLD 010	D Miller
SYN: 7604 WLDG-1025-131CL	08/25/14-12/12/14	
TTH 07:00AM-12:00PM	WLD 010	V Woods
SYN: 7607 WLDG-1025-144CL	08/25/14-12/12/14	
TTH 12:30PM-05:30PM	WLD 010	R Brown
SYN: 7608 WLDG-1025-266CL	08/25/14-12/12/14	
MW 05:32PM-10:32PM	WLD 010	R Spivey

INTRODUCTION TO GAS METAL ARC (MIG) WELDING – 160 HRS

Cost:	In district: \$270	Out of district: \$275
SYN: 7611 WLDG-1030-112CL	08/25/14-12/12/14	
TTH 07:00AM-12:00PM	WLD 010	D Miller
SYN: 7612 WLDG-1030-134CL	08/25/14-12/12/14	
MW 12:00PM-05:30PM	WLD 010	R Brown
SYN: 7613 WLDG-1030-141CL	08/25/14-12/12/14	
MW 07:00AM-12:00PM	WLD 010	V Woods
SYN: 7614 WLDG-1030-277CL	08/25/14-12/12/14	
TTH 05:32PM-10:32PM	WLD 010	R Brown

INTRODUCTION TO GAS TUNGSTEN ARC (TIG) WELDING – 160 HRS

Cost:	In district: \$270	Out of district: \$275
SYN: 7615 WLDG-1034-112CL	08/25/14-12/12/14	
TTH 07:00AM-12:00PM	WLD 010	D Miller
SYN: 7616 WLDG-1034-134CL	08/25/14-12/12/14	
MW 12:30PM-05:30PM	WLD 010	R Brown
SYN: 7618 WLDG-1034-277CL	08/25/14-12/12/14	
TTH 05:32PM-10:32PM	WLD 010	R Brown
SYN: 7617 WLDG-1034-141CL	08/25/14-12/12/14	
MW 07:00AM-12:00PM	WLD 010	V Woods

INTRODUCTION TO PIPE WELDING – 160 HRS

Cost:	In district: \$270	Out of district: \$275
SYN: 7620 WLDG-1035-111CL	08/25/14-12/12/14	
MW 07:00AM-12:00PM	WLD 010	D Miller
SYN: 7622 WLDG-1035-144CL	08/25/14-12/12/14	
TTH 12:30PM-05:30PM	WLD 010	R Brown
SYN: 7623 WLDG-1035-266CL	08/25/14-12/12/14	
MW 05:32PM-10:32PM	WLD 010	R Spivey
SYN: 6387 WLDG-1035-101CL	08/25/14-12/12/14	
F 07:00AM-12:00PM	WLD 010	
F 12:30PM-05:30PM	WLD 010	V Woods
SYN: 7621 WLDG-1035-131CL	08/25/14-12/12/14	
TTH 07:00AM-12:00PM	WLD 010	V Woods

INTERMEDIATE SHIELDED METAL ARC WELDING (SMAW) – 160 HRS

Cost:	In district: \$270	Out of district: \$275
SYN: 7624 WLDG-1057-102CL	08/25/14-12/12/14	
F 07:00AM-12:00PM	WLD 010	V Woods
F 12:30PM-05:30PM		
SYN: 7625 WLDG-1057-111CL	08/25/14-12/12/14	
MW 07:00AM-12:00PM	WLD 010	D Miller
SYN: 7626 WLDG-1057-131CL	08/25/14-12/12/14	
TTH 07:00AM-12:00PM	WLD 010	V Woods
SYN: 7627 WLDG-1057-144CL	08/25/14-12/12/14	
TTH 12:30PM-05:30PM	WLD 010	R Brown
SYN: 7628 WLDG-1057-266CL	08/25/14-12/12/14	
MW 05:32PM-10:32PM	WLD 010	R Spivey

INTERMEDIATE PIPE WELDING – 160 HRS

Cost:	In district: \$270	Out of district: \$275
SYN: 7641 WLDG-2006-102CL	08/25/14-12/12/14	
F 07:00AM-12:00PM	WLD 010	V Woods
F 12:30PM-05:30PM		
SYN: 7629 WLDG-2006-111CL	08/25/14-12/12/14	
MW 07:00AM-12:00PM	WLD 010	D Miller
SYN: 7630 WLDG-2006-131CL	08/25/14-12/12/14	
TTH 07:00AM-12:00PM	WLD 010	V Woods
SYN: 7631 WLDG-2006-144CL	08/25/14-12/12/14	
TTH 12:30PM-05:30PM	WLD 010	R Brown
SYN: 7632 WLDG-2006-266CL	08/25/14-12/12/14	
MW 05:32PM-10:32PM	WLD 010	R Spivey

WELDING, MULTIPLE PROCESSES – 160 HRS

Cost:	In district: \$270	Out of district: \$275
SYN: 7634 WLDG-2013-134CL	08/25/14-12/12/14	
MW 12:30PM-05:30PM	WLD 010	R Brown
SYN: 7635 WLDG-2013-141CL	08/25/14-12/12/14	
MW 07:00AM-12:00PM	WLD 010	V Woods
SYN: 7636 WLDG-2013-277CL	08/25/14-12/12/14	
TTH 05:32PM-10:32PM	WLD 010	R Brown
SYN: 7633 WLDG-2013-112CL	08/25/14-12/12/14	
TTH 07:00AM-12:00PM	WLD 010	D Miller

ADVANCED GAS TUNGSTEN ARC (GTAW) WELDING – 160 HRS

Cost:	In district: \$270	Out of district: \$275
SYN: 7637 WLDG-2051-112CL	08/25/14-12/12/14	
TTH 07:00AM-12:00PM	WLD 010	D Miller
SYN: 7638 WLDG-2051-134CL	08/25/14-12/12/14	
MW 12:30PM-05:30PM	WLD 010	R Brown
SYN: 7639 WLDG-2051-141CL	08/25/14-12/12/14	
MW 07:00AM-12:00PM	WLD 010	V Woods
SYN: 7640 WLDG-2051-277CL	08/25/14-12/12/14	
TTH 05:32PM-10:32PM	WLD 010	R Brown

Open Enrollment in Senior Adult Program Courses

Senior Adult Program course offerings are open to any student 18 or older. See (Senior trips and lectures are still only available to students 55 plus years of age.)

CONNECT with COM!

Join today!



Alumni & Friends ASSOCIATION

With CAFA you can connect with the College and others who attended, and receive special discounts and invitations to college events.

For more information, call 409-933-8419
or email alumni@com.edu.

When Should I Register?

If a class starts on a...	Register by noon on the following days.
Sunday, Monday, Tuesday	Wednesday (the week before it starts)
Wednesday, Thursday	Thursday (the week before it starts)
Friday	Monday (of the same week)
Saturday	Tuesday (of the same week)

ED2GO Online Courses

More than 300 online courses

brought to you by

Online Courses

anytime, anywhere... just a click away!



Learn More...

Online Courses Include:

- Expert Instructor
- 24-Hour Access
- Online Discussion Areas
- 6 Weeks of Instruction
- Hundreds of courses to choose from
- New sessions begin each month

Online Courses are informative, fun, convenient, and highly interactive. Courses are project-oriented and include lessons, quizzes, hands-on assignments, discussion areas, six-week format, supplementary links, and more.

You can complete any course entirely from your home or office, any time of the day or night.

Courses Start as Low as:

\$103

Call Sally Austin at 409-933-8259 for more information about ED2GO classes and to register.

College of the Mainland

<http://www.ed2go.com/mainland/>

Introduction to Microsoft Excel

Discover the secrets to setting up fully formatted worksheets quickly and efficiently.

Intermediate Microsoft Excel

Master advanced features of Microsoft Excel 2007, including charting and PivotTables, and discover how this powerful MS Office program can boost your productivity.

Grammar Refresher

Gain confidence in your ability to produce clean, grammatically correct documents and speeches.

Accounting Fundamentals

Gain a marketable new skill by learning the basics of double-entry bookkeeping, financial reporting, and more.

A to Z Grantwriting

Learn how to research and develop relationships with potential funding sources, organize grantwriting campaigns, and prepare proposals.

Medical Terminology: A Word Association Approach

Prepare for a career in the health services industry by learning medical terminology in a memorable and enjoyable fashion.

Introduction to QuickBooks

Learn how to quickly and efficiently gain control over the financial aspects of your business.

Creating Web Pages

Learn the basics of HTML so you can design, create, and post your very own site on the Web.

Explore a Career in Medical Coding

Learn how to use the CPT manual and the ICD-9-CM to find medical codes for any disease, condition, treatment, or surgical procedure.

Intermediate Microsoft Excel

Master advanced features of Microsoft Excel 2007, including charting and PivotTables, and discover how this powerful MS Office program can boost your productivity.

Beginning Writer's Workshop

Get a taste of the writer's life and improve your writing skills in this introduction to writing creatively.

Introduction to SQL

Gain a solid working knowledge of the most powerful and widely used database programming language.

Human Anatomy and Physiology

Gain a greater appreciation and understanding of the marvelous complexity of the human body.

Introduction to CSS and XHTML

Learn to create state-of-the-art Web sites using modern CSS and XHTML techniques.

Speed Spanish

Learn six easy recipes to glue Spanish words together into sentences, and you'll be speaking Spanish in no time.

TEXAS ONLINE DEFENSIVE DRIVING AND DRIVER'S EDUCATION

Texas Online Defensive Driving (TEA Course Provider #947) \$29.95 Cost

- Six-hour course
- Accepted by all Texas courts and municipalities for ticket dismissal
- Completers may be eligible for a 10 percent reduction in insurance policy premiums.

Texas Teen Driver Education Course (TEA Course Provider #C2636) \$129.95 Cost

- Has both a parent-taught and virtual-instructor-taught version
- Includes all DPS forms
- Meets all DPS requirements

Adult Driver Education Online (TEA Course Provider #C2636) \$65 Cost

- Guides drivers 18-24 years of age in obtaining their first driver's license
- Completers will be able to bypass the DPS written exam and will only be required to complete the driving portion of the DPS exam.

College of the Mainland and SAFETY-USA are proud to offer three online Texas Education Agency approved driving courses. These courses feature:

- Online text and interactive videos
- Full audio or read-along text for the hearing impaired
- Courses in both English and Spanish
- 24/7 customer phone support
- 24/7 course accessibility with exclusive course memory

Sponsored by
College of the Mainland SAFETY-USA™
1200 N. Auburn Rd. • Texas City, TX 77391 • 409.938.1211

Ready for class?
College of the Mainland and Safety-USA are proud to partner together to bring you access to all the resources you need to get your driver's license, dismiss a traffic ticket, order DPS records and more!

Teen Driver Education Course Adult Driver Education Course Defensive Driving

Registration available online only at <http://tx-dps.com/affiliates/college-of-the-mainland>.
1-888-596-7307

www.com.edu/ce

FAST-TRACK REAL ESTATE PROGRAM

In one semester, students in this program prepare for successful careers as real estate agents, who have an average annual salary of \$53,100 according to the Bureau of Labor Statistics. All classes are offered in two-week sessions, and students may take them in any order. Classes are held Monday through Thursday, 9 a.m. to 1 p.m. at the COM Learning Center-North County located in League City at 200 Parker Ct. at FM 518.

The Texas Real Estate Commission requires students to complete 180 classroom hours before taking the Texas Real Estate Salesperson Exam. Six courses are mandatory: Real Estate Principles I, Real Estate Principles II, Real Estate Law of Agency, Real Estate Law of Contracts, Real Estate Finance, and Texas Real Estate Promulgated Contracts and Forms.

REAL ESTATE CERTIFICATE

Course #	Title	Hrs
RELE 1001	Real Estate Principles I This course is an overview of licensing as a real estate broker or salesperson. Topics include ethics of practice as a license holder, titles to and conveyance of real estate, legal descriptions, deeds, encumbrances and liens, distinctions between personal and real property, appraisal, finance and regulations, closing procedures and real estate mathematics. A minimum of three hours classroom instruction will be devoted to federal, state and local laws relating to housing discrimination, housing credit discrimination and community reinvestment. Textbooks can be purchased at the COM Bookstore or online.	32
RELE 1038	Real Estate Principles II This class complements Real Estate Principles I and can be taken before it. Students can purchase the textbook at the COM Bookstore or online.	32
RELE 2001	Real Estate Law of Agency This course is the study of law of agency including principal-agent and master-servant relationships, the authority of an agent, the termination of an agent's authority, the fiduciary and other duties of an agent, employment law, deceptive trade practices, listing or buying procedures and the disclosure of an agency. Students can purchase the textbook at the COM Bookstore or online.	32
RELE 1011	Real Estate Law of Contracts This course covers the elements of a contract, offers and acceptance, the statute of frauds, specific performance and remedies for breaches of contracts, unauthorized practice of law, commission rules relating to use of adopted forms and owner disclosure requirements. Students can purchase the textbook at the COM Bookstore or online.	32
RELE 1019	Real Estate Finance This course provides an overview of the U.S. monetary system, primary and secondary money markets, sources of mortgage loans, federal government programs, loan applications, processes and procedures, closing costs, alternative financial instruments, equal credit opportunity laws affecting mortgage lending, Community Reinvestment Act, and the State Housing Agency. Students can purchase the textbook at the COM Bookstore or online.	32
RELE 1000	Real Estate Promulgated Contracts This class examines various topics related to Texas real estate contracts such as the unauthorized practice of law, the Texas Broker-Lawyer Committee, TREC rules governing promulgated contract use, an examination of current TREC promulgated contracts and practice preparing current TREC contracts and forms using case studies. Students can purchase the textbook at the COM Bookstore or online.	32
TOTAL HOURS		180

State certification: Students successfully completing these courses will be prepared to take the Texas Real Estate Salesperson Exam.

SUPPLEMENTAL COURSES

RELE 1025	Real Estate Math Students will study basic arithmetic, including the time-value of money, mathematical logic, percentages, interest, depreciation, amortization, proration and estimating the closing statement. Students can purchase the textbook at the COM Bookstore or online.	32
RELE 1003	Real Estate Appraisals This course is a study of the central purposes and functions of an appraisal, social and economic determinants of value, appraisal case studies, cost, market data and income approaches to value estimates, final correlations, and reporting. Students can purchase the textbook at the COM Bookstore or online.	32
RELE 1058	Real Estate Exam Review This course summarizes the required and core classes and reviews information to prepare students for the real estate examination. Students can purchase the textbook at the COM Bookstore or online.	16

REAL ESTATE PRINCIPLES I – 32 HRS

Cost:	In district: \$150	Out of district: \$155
SYN: 7434	RELE-1001-108CL	09/02/14-09/12/14
MTWTH	09:00AM-01:00PM	CLC 111 J Treadwell

REAL ESTATE PRINCIPLES II – 32 HRS

Cost:	In district: \$150	Out of district: \$155
SYN: 7435	RELE-1038-109CL	09/15/14-09/25/14
MTWTH	09:00AM-01:00PM	CLC 111 M Privratsky

REAL ESTATE LAW OF CONTRACTS – 32 HRS

Cost:	In district: \$150	Out of district: \$155
SYN: 7436	RELE-2001-110CL	09/29/14-10/09/14
MTWTH	09:00AM-01:00PM	CLC 111 M Privratsky

REAL ESTATE CONTRACTS – 32 HRS

Cost:	In district: \$150	Out of district: \$155
SYN: 7437	RELE-1011-111CL	10/13/14-10/23/14
MTWTH	09:00AM-01:00PM	CLC 111 M Privratsky

REAL ESTATE FINANCE – 32 HRS

Cost:	In district: \$150	Out of district: \$155
SYN: 7438	RELE-1019-112CL	10/27/14-11/06/14
MTWTH	09:00AM-01:00PM	CLC 111 J Treadwell

REAL ESTATE PROMULGATED CONTRACTS AND FORMS – 32 HRS

Cost: In district: \$150 Out of district: \$155
SYN: 7439 RELE-1000-113CL 11/10/14-11/20/14
MTWTH 09:00AM-01:00PM CLC 111 J Treadwell

REAL ESTATE MATH – 32 HRS

Cost: In district: \$150 Out of district: \$155
SYN: 7748 RELE-1025-114CL 12/01/14-12/11/14
MTWTH 09:00AM-01:00PM CLC 111 J Treadwell

REAL ESTATE EXAM REVIEW – 16 HRS

Cost: In district: \$80 Out of district: \$85
SYN: 7441 RELE-1058-115CL 12/12/14-12/13/14
FS 09:00AM-05:00PM CLC 111 M Privratsky

For more information about the Real Estate Program, call 409-933-8646.

A Word about Waiting to Register...

Each class has a minimum enrollment. Once that minimum is reached, the class has “made.” Find a class you like, and encourage a friend to join you! Sometimes two or three people can make a difference between having a course “make” or be canceled.

Save This Schedule!

**CE offers hundreds of classes.
One is just right for you!**

We’re in Your Neighborhood!

The COM Learning Center – North County is located at 200 Parker Ct. in League City.
It offers allied health care programs, allied health professional development courses and day classes of the COM Fast-Track Real Estate Program.
Call 281-332-1800 for more information or visit www.com.edu/nc.

**Continuing Education
General Information Policies**

See page 5.

INDUSTRIAL TRADE CAREERS

Heating, Ventilation and Air-Conditioning Certificate

RECOMMENDED COURSE SEQUENCE

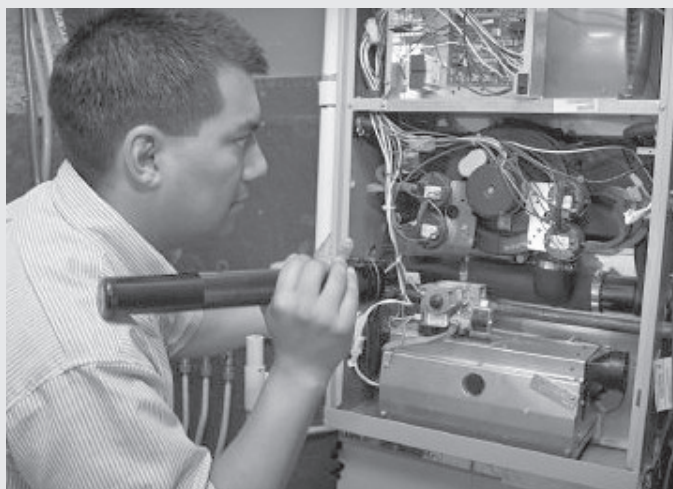
(Select classes will be offered each semester.)

COM's Heating, Ventilation and Air-Conditioning Program, which can be completed in less than a year, prepares students for a successful career as an HVAC mechanic. A growing career, HVAC mechanics work with systems in commercial offices, industrial complexes, manufacturing plants, homes, restaurants and hotels. The need for qualified HVAC mechanics and installers in the Gulf Coast region is anticipated to grow 34 percent by 2018. The median hourly wage is \$20.04, with entry-level positions starting below that rate. (Source: Workforce Solutions, 2013) Financial assistance may be available (see page 6).

Course #	Title	Hrs
HART 1038	Air-Conditioning, Level I This course introduces students to HVAC terminology, tools and skills. The instructor will discuss basic HVAC principles and guide students in hands-on activities.	96
HART 1005	Air-Conditioning, Level II Students will discover how to apply air-conditioning principles and will learn about air properties, routine maintenance, thermodynamics and compressors. Students will learn to correctly measure AC and DC electrical circuits as well as air properties and distribution.	96
HART 2036	Air-Conditioning, Level III This is an advanced course demonstrating troubleshooting principles. Students learn to use test instruments to conduct performance tests and to diagnose problems in air-conditioning and refrigeration components and systems.	48
HART 1043	EPA Course and Test Federal regulations require that those who work with regulated refrigerants be certified. This course will provide intensive training to update students' knowledge and/or skills in preparation for the certification exam, which verifies that students have an understanding of Section 608 of the Federal Clean Air Act of 1990.	10
TOTAL HOURS		250

EPA COURSE AND TEST – 10 HRS

Cost:	In district: \$185	Out of district: \$190
SYN: 7514 HART-1043-110CL		10/04/14-10/11/14
S	08:00AM-01:00PM	GCSI 113 R Bird
SYN: 7515 HART-1043-111CL		12/06/14-12/13/14
S	08:00AM-01:00PM	GCSI 113 R Bird



TEXAS LABOR MARKET INFORMATION

Texas Employment 2010	24,050
Projected Texas Employment 2020	30,760
Absolute Change 2010 - 2020	6,710
Percent Change 2010 - 2020	27.90%
Average Hourly Wage 2012	\$19.55
Average Openings per year due to Replacement	425
Average Openings per year due to Growth	670

<http://socrates.cdr.state.tx.us/>

When Should I Register?

If a class starts on a...	Register by noon on the following days.
Sunday, Monday, Tuesday	Wednesday (the week before it starts)
Wednesday, Thursday	Thursday (the week before it starts)
Friday	Monday (of the same week)
Saturday	Tuesday (of the same week)

Continuing Education Office

Located in the Technical-Vocational Building, Room T-1475

Business Hours:

Monday through Friday, 8 a.m. – 5 p.m.

Phone: 409-933-8586

Fax: 409-933-8026

www.com.edu/ce

Visit us online at www.com.edu/ce.

Mechanical Maintenance Technician, Basic Certificate

REQUIRED COURSE SEQUENCE

Required for the Mechanical Maintenance Technician Intermediate and Advanced Certificates and the Machinist Certificate (Select classes will be offered each semester.)
Textbook not included

COM's program prepares students for a wide variety of duties, such as preventative maintenance, making machinery adjustments and repairing equipment using blueprints, sketches, diagrams and a variety of tools. Employment can be found in a variety of industrial settings such as petrochemical, energy exploration, manufacturing and productions, machine shop, power plants and construction sites. The need for qualified mechanical maintenance technicians (also referred to as industrial machinery mechanic, maintenance worker or millwright) in the Gulf Coast region is anticipated to grow by 41.5 percent by 2020. The median hourly wage is \$23.23, with entry-level positions starting below that rate. (Source: Workforce Solutions, 2014) Financial assistance may be available (see page 6).

Course #	Title	Hrs
INMT 1005	Introduction to Industrial Maintenance This course demonstrates the basic mechanical skills and repair techniques common to most fields of industrial maintenance. Topics include using precision measuring instruments and the safety rules common in industry, including lock-out/tag-out.	65
TECM 1001	Industrial Mathematics This course teaches math skills applicable to industrial occupations. It includes fraction and decimal manipulation, measurement, percentages and problem-solving techniques for equations and ratio/proportion applications.	65
POFT 1006	Job Search and Employment Skills Students will obtain skills required to obtain a job and will complete a standard employment application, demonstrate interviewing skills and discuss the job search process.	40
MCHN 1002	Print Reading for Machine Trades and Rigging Students will study blueprints for machining trades with an emphasis on machine drawings. Topics will include identifying the elements of machine drawings; interpreting the dimensions, tolerances and geometric aspects of blueprints; explaining geometric dimensioning and tolerancing (GD&T) symbols and their meanings; identifying the safety concerns associated with lifting loads; rigging a load for lifting; performing a safety check before a load is lifted; and identifying the equipment required to make a lift. Prerequisites: TECM-1001 and INMT-1005	65
WLDG 1021	Metallurgy and Welding Fundamentals This course is an introduction to the fundamentals of the equipment used in oxy-fuel and arc welding, including welding and cutting safety, basic oxy-fuel welding and cutting, basic arc welding processes and basic metallurgy. Prerequisite: Basic MMT Certificate TECM 1001, INMT 1005	65
MCHN 1038	Basic Machine Shop I This course provides an introduction to machine shop theory, math, terminology, basic bench work and part layout using a variety of tools. It also teaches how and when to use machine tools, such as band saws, grinders, drill presses, lathes and mills. Prerequisites: TECM 1001, INMT 1005 and MCHN 1002	65
TOTAL HOURS		365

INDUSTRIAL MATHEMATICS – 65 HRS

Cost: In district: \$475 Out of district: \$480
SYN: 7505 TECM-1001-201CL 09/09/14-11/13/14
TTH 06:00PM-09:15PM AUD 007 N Hicks

INDUSTRIAL MAINTENANCE, INTRODUCTION – 65 HRS

Cost: In district: \$475 Out of district: \$480
SYN: 7506 INMT-1005-201CL 09/08/14-11/12/14
MW 06:00PM-09:15PM AUD 007 J Thomas

PRINT READING FOR MACHINE TRADES AND RIGGING – 65 HRS

Cost: In district: \$475 Out of district: \$480
SYN: 7507 MCHN-1002-201CL 09/09/14-11/13/14
TTH 06:00PM-09:15PM AUD 005 J Thomas/J Buffa

BASIC MACHINE SHOP I – 65 HRS

Cost: In district: \$475 Out of district: \$480
SYN: 7840 MCHN-2018-201CL 09/08/14-11/12/14
MW 06:00PM-09:15PM AUD 012 A Loop

TEXAS LABOR MARKET INFORMATION

Texas Employment 2010	31,020
Projected Texas Employment 2020	43,480
Absolute Change 2010 - 2020	12,460
Percent Change 2010 - 2020	40.20%
Average Hourly Wage 2012	\$23.04
Average Openings per year due to Replacement	595
Average Openings per year due to Growth	1,245



Mechanical Maintenance Technician, Intermediate Certificate

REQUIRED COURSE SEQUENCE

Prerequisite: Basic Mechanical Maintenance Technician Certificate
Textbook not included

Course #	Title	Hrs
MCHN 2005	Millwright III – Bearings, Seals and Couplings 65 This course is an introduction to bearings and seals. It focuses on the design and installation of seals, bearings and couplings. Prerequisites: Basic MMT Certificate	65
MCHN 2007	Millwright IV – Lubrication, Valves and Pumps 65 This course is a study in the recognition and application of various types of pumps. It will focus on troubleshooting, repairing and installing pumps. Prerequisites: Basic MMT Certificate	65
MCHN 2012	Millwright V – Gear Boxes, Chain and Belt Drives 65 This course teaches the recognition and application of gearboxes, and it reviews drive installations using chain and belt drives. This course will focus on troubleshooting, repairing and installing gearboxes, chain drives and belt drives. Prerequisites: Basic MMT Certificate	65
INMT 2003	Pumps, Compressors and Mechanical Drives 65 Students will study the theory and operations of various types of pumps and compressors. Topics include mechanical power transmission systems including gears, v-belts and chain drives. Prerequisites: Basic MMT Certificate	65
TOTAL HOURS		260

MILLWRIGHT III – BEARINGS, SEALS AND COUPLINGS – 65 HRS

Cost: In district: \$475 Out of district: \$480
SYN: 7508 MCHN-2005-201CL 09/08/14-11/12/14
MW 06:00PM-09:15PM AUD 017 L Lindsey

MILLWRIGHT V – GEARBOXES, CHAIN DRIVES AND BELT DRIVES – 65 HRS

Cost: In district: \$475 Out of district: \$480
SYN: 7510 MCHN-2012-201CL 09/08/14-11/13/14
MW 06:00PM-09:15PM AUD 019 R Lopez

Mechanical Maintenance Technician, Advanced Certificate

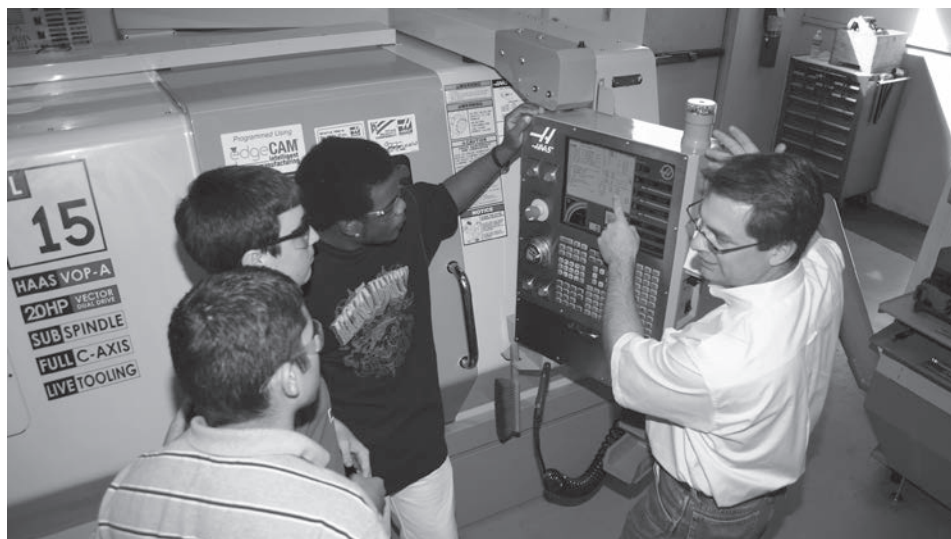
REQUIRED COURSE SEQUENCE

Prerequisites: Basic and Intermediate Mechanical Maintenance Technician Certificates
Textbook not included

Course #	Title	Hrs
MCHN 2014	Millwright VI – Reciprocating, Centrifugal Compressors and Blowers 65 This course is a study of the design, operation and application of fans, blowers and compressors. Topics will emphasize the relationships and differences between types of pneumatic equipment as well as troubleshooting, repairing and installing fans, blowers and compressors. Prerequisites: Basic and Intermediate MMT Certificates	65
MCHN 2016	Millwright VII – Turbines 65 This course is a study in the operational principles of turbines, the types of turbines and the troubleshooting and repair of turbine equipment. The course will also review the installation of turbine systems. Prerequisites: Basic and Intermediate MMT Certificates	65
MCHN 2018	Millwright VIII – Alignment and Vibration 65 This course is an introduction to equipment alignment techniques and procedures. The course will focus on skill development in collinear alignment using both the conventional method of alignment and the reverse dial indicator method. This course will also introduce the student to laser shaft alignment. Prerequisites: Basic and Intermediate MMT Certificates	65
TOTAL HOURS		195

MILWRIGHT VIII – ALIGNMENT AND VIBRATION – 65 HRS

Cost: In district: \$475 Out of district: \$480
SYN: 7511 MCHN-2018-201CL 09/09/14-11/13/14
TTH 06:00PM-09:15PM AUD 017 M Annweiler



Machinist Certificate

RECOMMENDED COURSE SEQUENCE

Prerequisite: Mechanical Maintenance Technician, Basic Certificate
Textbook not included

COM's program prepares students for employment utilizing machine tools, such as lathes, milling machines and grinders to produce precision metal parts. Machinist work from blueprints, sketches or computer-aided design (CAD), and computer-aided manufacturing (CAM) files to set up, operate and disassemble manual, automatic and computer-controlled (CNC) machine tools. Employment can be found in a variety of industrial settings such as petro-chemical, energy exploration, manufacturing and productions, machine shop, power plants and construction sites. The need for qualified machinists in the Gulf Coast region is anticipated to grow by 25.3 percent by 2020. The median hourly wage is \$18.95, with entry-level positions starting below that rate. (Source: Workforce Solutions, 2014) Financial assistance may be available (see page 6). The textbook is not included.

Course #	Title	Hrs
MCHN 1041	Basic Machine Shop II This course is a study of the machine shop, machine parts and their functions. It will focus on select layout tools, techniques, terminology, basic machine setups and shop formulas. It will teach how to perform semi-precision layout, execute grinding techniques, demonstrate basic machine operations and apply proper measuring tools. Prerequisite: Basic MMT Certificate	65
MCHN 2035	CNC Programming This course is a study of advanced CNC operations with an emphasis on programming and the operations of machining and turning centers. Prerequisites: Basic MMT Certificate and MCHN 1041	124
MCHN 1026	CAD/CAM EdgeCam This course is a study of computer-aided manufacturing (CAM) software, which is used to develop applications for manufacturing. It will focus on tool geometry, tool selection and the tool library. Prerequisites: Basic MMT Certificate, MCHN 1041 and MCHN 2035	65
DFTG 2040	CAD/CAM 3-D Solid Model Design and Manufacture This course is a study of computer-aided modeling. It will focus on the development of 3-D drawings and models from engineering sketches and orthographic drawings and the utilization of 3-D models in design work. Prerequisites: Basic MMT Certificate, MCHN 1041, MCHN 2035 and MCHN 1026	65
TOTAL HOURS		319

CNC PROGRAMMING – 65 HRS

Cost: In district: \$475 Out of district: \$480
SYN: 7512 MCHN-2035-201CL 09/09/14-11/13/14
TTH 06:00PM-09:15PM AUD 019 COM Faculty

WELDING

Prepare to enter a field with growing opportunities with COM's Welding Technology Program. Area plants are investing billions of dollars in capital improvements, and COM provides training that supports industry demands. Employment can be found in a variety of industrial settings such as the oil and gas industry, energy exploration, power plants and construction. The need for qualified welders in the Gulf Coast region is anticipated to grow by 26.7 percent by 2020. The median hourly wage is \$17.53 with entry-level positions starting below that rate. (Source: Workforce Solutions, 2014)

COM's program prepares a student completing the Welding, Multiple Processes class to be hired as a welder SMAW (shielded metal arc welding) helper/tacker. Students completing three classes may be hired as a structural welder (SMAW), while students completing five classes may be hired as a pipe welder (SMAW). There is a \$200 supply fee per class and a one-time investment of approximately \$150 for personal equipment. Financial assistance may be available (see page 6).

WELDING, MULTIPLE PROCESSES – 112 HRS

Cost: In district: \$500 Out of district: \$505
SYN: 5909 WLDG-1007-140CL 09/02/14-09/24/14
MTWTH 08:30AM-05:00PM WLD 010 V Woods/D Miller
SYN: 5910 WLDG-1007-270CL 09/02/14-10/20/14
MTWTH 05:30PM-09:00PM WLD 010 K Phillip
SYN: 5921 WLDG-1007-141CL 10/06/14-10/28/14
MTWTH 08:30AM-05:00PM WLD 010 V Woods/D Miller
SYN: 5922 WLDG-1007-271CL 10/21/14-12/09/14
MTWTH 05:30PM-09:00PM WLD 010 K Phillip
SYN: 5926 WLDG-1007-142CL 11/03/14-11/25/14
MTWTH 08:30AM-05:00PM WLD 010 V Woods/D Miller

WELDING, MULTIPLE PROCESSES (WEEKEND) – 112 HRS

Cost: In district: \$500 Out of district: \$505
SYN: 7566 WLDG-1007-273CL 09/12/14-12/06/14
F 06:00PM-10:00PM WLD 010 COM Faculty
S 08:00AM-02:00PM



*Keith Harrington
COM Welding Student*

**FOR HARRINGTON, A
FRESH START TOOK
JUST 12 WEEKS**

Read Harrington's story on
page 53.

PUBLIC SERVICE CAREERS

EMT – BASIC RECERTIFICATION – 48 HRS

This course meets the current Texas Department of State Health Services requirements for recertification for EMS personnel. Contact Julianne Duncan at 409-933-8198 or email jduncan3@com.edu to arrange dates and times.

Cost: In district: \$250 Out of district: \$255
SYN: 7340 EMSP-1030-101CL 08/25/14-12/12/14
MW 08:00AM-05:00PM PSC 118 J Duncan

FIRE

FIRS 2000, Texas Commission on Fire Protection Continuing Education, Skills Testing

This course is a customized training program for students who require continuing education hours for maintaining Texas Commission on Fire Protection certification. Students may complete training through classroom or Internet instruction. Additionally, students who require a skills test in order to become eligible for a recertification exam for basic firefighter with the TCFP may complete this course.

Contact Danny McLerran, COM director of fire technology at 409-933-8378 or dmclerran@com.edu for course design and enrollment information.

HAZARDOUS MATERIALS TECHNICIAN – 80 HRS

Students successfully completing the course will be eligible for the certification examination of the Texas Commission on Fire Protection (TCFP). The course explains incident analysis, response planning, implementing the planned response, evaluating progress and terminating the incident. It also covers TCFP-required skills and hazardous material laws, regulations and standards. This course meets the curriculum requirements of TCFP for hazardous materials technician. Prerequisite: This class is for awareness and operations-level responders.

Cost: In district: \$880 Out of district: \$885
SYN: 7341 FIRS-2050-101CL 10/20/14-10/31/14
MTWTFH 08:00AM-05:00PM PSC 118 S Kozlowski

FIRE OFFICER III – 64 HRS

This course satisfies curriculum requirements of the Texas Commission on Fire Protection (TCFP) for Fire Officer III certification. Topics include emergency management performance skills, human resource management, inspection, investigation, administration, emergency service delivery, health, safety, and community and government relations. Students must attend labs to complete skills that the TCFP requires be completed in person. Students successfully completing the course are eligible to take the TCFP certification examination for Fire Officer III provided they satisfy the TCFP testing requirements. Prerequisites: Completion of Fire Instructor II and Fire Officer II courses. TCFP testing fee \$85 responsibility of student.

Cost: In district: \$260 Out of district: \$265
SYN: 7588 FIRT-2056-001IN 08/25/14-10/31/14
Internet D McLerran

FIRE OFFICER IV – 64 HRS

This course satisfies curriculum requirements of the Texas Commission on Fire Protection for Fire Officer IV certification. Topics include human resource management, emergency management performance skills, administration, inspection, investigation, emergency service delivery, health, safety, and community and government relations. Students must attend labs to complete skills that the TCFP requires be completed in person. Students successfully completing the course are eligible to take the TCFP certification examination for Fire Officer IV provided they satisfy the TCFP testing requirements. Prerequisites: Completion of Fire Instructor II and Fire Officer III courses. TCFP testing fee \$85 responsibility of student.

Cost: In district: \$260 Out of district: \$265
SYN: 7589 FIRT-2057-001IN 11/03/14-12/12/14
Internet D McLerran

TCFP CONTINUING EDUCATION – 20 HRS

This course is a customized training program for students who require continuing education hours for maintaining certification with the Texas Commission on Fire Protection. This course is offered through the Internet, and curriculum may be designed to include specific categories of training required by the TCFP for individuals to maintain certification. Contact Danny McLerran, Director of Fire Technology, at 409-933-8378 or dmclerran@com.edu for information. A new section of this course will begin the first Monday of every month through October 2015. TCFP testing fee \$85 responsibility of student.

Cost: In district: \$85 Out of district: \$90
SYN: 7590 FIRS-2000-001IN 08/25/14-10/17/14
Internet D McLerran

GCFFA New Member, SFFMA Firefighter I

The course provides basic new member training for volunteer firefighters. It covers curriculum and skills required for the State Firemen's and Fire Marshal's Association Firefighter I, which include 136 training hours. Classes meet Monday and Wednesday from 6-10 p.m. and every other Saturday from 8 a.m. to 5 p.m. for 12 weeks.

Upon completion, students will receive a certificate of completion and are eligible to test for SFFMA Firefighter I.

For additional information or to enroll, contact the GCFFA Training Coordinator, Stan Kozlowski at SKozlow404@aol.com.

ACTOR-TURNED-FIREFIGHTER DISCUSSES HIS UNUSUAL CAREER PATH.

Read Jasyn's story at www.com.edu/success.



Jasyn Jefferies
COM Fire Academy Graduate

BASIC POLICE OFFICER



The Basic Peace Officer Academy (769 hours) provides graduates the necessary basic training to obtain a position as a police officer, constable, deputy sheriff or any other licensed peace officer position within the state of Texas.

The night academy is designed for students who are employed full-time. All courses must be taken together and successfully passed for the graduate to test for state licensure.

Potential cadets must be fingerprinted no later than July 9, 2014, and completed packets must be turned in by the same date.

Our next night academy will start July 28 and end Dec. 5, 2014.

For more information, call
Susan Meadows at 409-933-8285 or
BJ Whitburn at 409-933-8299.

Need Your TCOLE Mandated Training?



Is your department looking for more training for its officers? Contact College of the Mainland Law Enforcement Training for all of your education. COM can accommodate nearly any training request you may have, from Basic Peace Officer to Master Instructor.

Call us, and we will be happy to work with you.

For more information, call 409-933-8299.

SECURITY AND LOSS PREVENTION

COMMISSIONED SECURITY OFFICER – 40 HRS

This course provides required training to carry firearms for private security employment. Training consists of Texas Commission on Private Security Levels II and III, covering the role of the security officer, legal power and authority for arrest, search and use of force, professionalism, leadership, ethical conduct, written documentation, emergency situation conflict resolution, and commission rules and regulations. Students must pass written exams and demonstrate proficiency with a handgun and shotgun. Successful completion of the course will provide initial certification through the Texas Private Security Bureau to carry a firearm for private security employment responsibility. Call 409-933-8285 for more information.

Cost:	In district: \$260	Out of district: \$265
SYN: 7324 SLPS-1013-101CL		09/22/14-09/26/14
MTWTHF 08:00AM-05:00PM	PSC 116	COM Faculty
SYN: 7333 SLPS-1013-201CL		10/06/14-10/17/14
MTWTHF 06:00PM-10:00PM	PSC 116	COM Faculty
SYN: 7334 SLPS-1013-102CL		11/17/14-11/21/14
MTWTHF 08:00AM-05:00PM	PSC 116	COM Faculty

SECURITY CLASSROOM INSTRUCTOR – 40 HRS

This course is designed to comply with mandated Texas Commission on Private Security training standards for the issuance of a classroom instructor's license. The course curriculum is taken directly from the TCOLE Basic Instructor Course. Topics covered include the adult learning process, the four phases of the learning process, factors affecting adult learning, lesson plan preparation, learning objectives and their proper use, methods of instruction, techniques for developing tests and evaluations and the use of instructional media.

Cost:	In district: \$112	Out of district: \$117
SYN: 7339 SLPS-2059-101CL		10/06/14-10/10/14
MTWTHF 08:00AM-05:00PM	PSC 116	R Williamson

SECURITY FIREARMS REQUALIFICATION/CE – 7 HRS

This course provides training for the every-two-years firearms requalification and continuing education training mandated by the Texas Commission on Private Security in order to recertify as a commissioned security officer. Training must take place within the last 90 days prior to the expiration date of the commission. Call 409-933-8285 for more information.

Cost:	In district: \$65	Out of district: \$70
SYN: 7460 SLPS-2000-101CL		09/26/14-09/26/14
F 08:00AM-03:00PM	FIR 107	COM Faculty
SYN: 7471 SLPS-2000-102CL		10/24/14-10/24/14
F 08:00AM-03:00PM	FIR 107	COM Faculty
SYN: 7472 SLPS-2000-103CL		11/21/14-11/21/14
F 08:00AM-03:00PM	FIR 107	COM Faculty
SYN: 7473 SLPS-2000-104CL		12/12/14-12/12/14
F 08:00AM-03:00PM	FIR 107	COM Faculty

SECURITY FIREARMS INSTRUCTOR – 40 HRS

This course is designed to comply with mandated TCOLE training standards for the issuance of a firearms instructor license. Topics include instruction methodology, weapons handling, weapons maintenance, course of fire development, range development and exposure to airborne lead dust. Prerequisite: Each student will be required to shoot three courses of fire (revolver/pistol/shotgun) on the first day and obtain a minimum score of 90 percent (two attempts). A student unable to achieve 90 percent will not be allowed to participate in the course at this time. No refunds will be issued. Each student must provide a letter on letterhead confirming current employment or designation by agency chief administrator or academy coordinator as a firearms instructor. The minimum age is 21. Tuition includes all necessary professional standard ammunition, range fees, target supplies, weapon cleaning supplies and a notebook.

Cost: In district: \$450 Out of district: \$455
 SYN: 7474 SLPS-2000-105CL 12/08/14-12/12/14
 MTWTHF 08:00AM-05:00PM FIR 107 COM Faculty

SECURITY NEW SUPERVISOR – 24 HRS

This course prepares new supervisors for their supervisory role. Topics include values, ethics, principles, communication, leadership styles, cultural diversity, racial sensitivity, planning and organizing. It meets the requirements of Section 415.034 Texas Government Code, continuing education for new supervisors.

Cost: In district: \$62 Out of district: \$67
 SYN: 7475 SLPS-2000-106CL 10/01/14-10/03/14
 WTHF 08:00AM-05:00PM PSC 117 R Williamson

When Should I Register?

If a class starts on a...	Register by noon on the following days.
Sunday, Monday, Tuesday	Wednesday (the week before it starts)
Wednesday, Thursday	Thursday (the week before it starts)
Friday	Monday (of the same week)
Saturday	Tuesday (of the same week)

Continuing Education Office

Located in the Technical-Vocational Building, Room T-1475

Business Hours:
 Monday through Friday, 8 a.m. – 5 p.m.

Phone: 409-933-8586
 Fax: 409-933-8026
www.com.edu/ce

Visit us online at www.com.edu/ce.

CONTINUING EDUCATION FOR LAW ENFORCEMENT

CRISIS INTERVENTION TRAINING – 16 HRS

The class describes how to apply behavioral analysis interview techniques when interviewing victims and witnesses. It includes interviewing basics and strategies, profiling, statement analysis, submodality triggers and specific questioning formulas.

Cost: In district: \$40 Out of district: \$45
 SYN: 7442 CJLE-1001-101CL 09/22/14-09/23/14
 MT 08:00AM-05:00PM PSC 117 C Robacker

HUMAN TRAFFICKING – 8 HRS

This course, mandated by the Texas Commission on Law Enforcement, covers all aspects of human trafficking including illegal crossings, modern slavery and forced prostitution. Students will examine the history of human trafficking as well as current laws and the challenges to policing human trafficking domestically and internationally.

Cost: In district: \$25 Out of district: \$30
 SYN: 7592 CJLEX-1046-101CL 09/19/14-09/19/14
 F 08:00AM-05:00PM PSC 116 R Williamson

ICC, ARREST, SEARCH AND SEIZURE – 16 HRS

This course covers probable cause, detention and arrest. It discusses exceptions to search warrant requirements, search warrant principles and preparation (including documentation and components of a probable cause affidavit). It also examines suppression hearings and civil liabilities.

Cost: In district: \$40 Out of district: \$45
 SYN: 7454 CJLE-2002-101CL 10/23/14-10/24/14
 THF 08:00AM-05:00PM PSC 116 R Williamson

INTERMEDIATE SPANISH – 32 HRS

This class teaches practical Spanish communication skills for law enforcement officers. Students learn to use Spanish phrases, greetings, common expressions and commands. The class discusses cultural variations and common perceptions of Spanish-speaking individuals. It meets the requirements as established by the Texas Commission on Law Enforcement (TCOLE) Course #2109.

Cost: In district: \$80 Out of district: \$85
 SYN: 7453 CJLE-1059-101CL 10/20/14-10/24/14
 MTWTH 08:00AM-05:00PM PSC 117 C Robinson

NEW SUPERVISORS – 24 HRS

This course prepares new supervisors for their role. Topics include leadership styles, values, ethics, communication, cultural diversity, racial sensitivity, planning and organizing. It meets requirements of Section 415.034 Texas Government Code, continuing education for new supervisors.

Cost: In district: \$60 Out of district: \$65
 SYN: 7444 CJLE-1030-101CL 10/01/14-10/03/14
 WTHF 08:00AM-05:00PM PSC 116 R Williamson

POLICE FIREARMS INSTRUCTOR – 40 HRS

This course complies with mandated Texas Commission on Law Enforcement training standards for the issuance of a firearms instructor license. Topics covered include instruction methodology, weapons handling, weapons maintenance, course of fire development, range development and exposure to airborne lead dust. Prerequisite: Each student will be required to shoot three courses of fire (revolver/pistol/shotgun) on the first day and obtain a minimum score of 90 percent (two attempts). A student unable to achieve 90 percent will not be allowed to participate in the course at this time. No refunds will be issued. Each student must provide a letter on letterhead confirming current employment or designation by agency chief administrator or academy coordinator as a firearms instructor. The minimum age is 21. Tuition includes all necessary professional standard ammunition, range fees, target supplies, weapon cleaning supplies and a notebook.

Cost: In district: \$450 Out of district: \$455
SYN: 7455 CJLE-2038-101CL 12/08/14-12/12/14
MTWTHF 08:00AM-05:00PM FIR 107 COM Faculty

TCOLE INSTRUCTOR – 40 HRS

This course will introduce students to the adult learning process, the differences between adult and child learning, the role of the instructor, the three domains of learning and their impact on the learning process. Other topics include the factors that affect learning the four phases of the teaching/learning process, learning objectives and their proper use, lesson plan preparation, methods of instruction, techniques for developing tests and evaluations, and the use of instructional media.

Cost: In district: \$110 Out of district: \$115
SYN: 7452 CJLE-2049-101CL 10/06/14-10/10/14
MTWTHF 08:00AM-05:00PM PSC 116 R Williamson

LEGAL UPDATE – 4 HRS

TCOLE 3182: The goal of this curriculum is to provide law enforcement officers with an update on recent statute changes and additions provided by the 82nd Legislature. Recent Supreme Court decisions that affect issues such as search and seizure and detention are also included in this curriculum as these cases may impact the function, policy and procedures of law enforcement officers and law enforcement administration.

Cost: In district: \$10 Out of district: \$15
SYN: 7345 LE-1005-101CL 09/05/14-09/05/14
F 08:00AM-12:00PM PSC 116 R Williamson
SYN: 7346 LE-1005-102CL 09/05/14-09/05/14
F 01:00PM-05:00PM PSC 116 R Williamson

CONNECT with COM!

Join today!

 College of the Mainland®

Alumni & Friends ASSOCIATION

With CAFA you can connect with the College and others who attended, and receive special discounts and invitations to college events.

For more information, call 409-933-8419
or email alumni@com.edu.

**The pool will be closed
until further notice.
We are sorry for the
inconvenience.**

Follow us!



/collegeofthemainland



@COMDucks



@collegeofthemainland



College of the Mainland



/COMFightingDucks

PROFESSIONAL DEVELOPMENT

Want a Career as a Child Care Provider/Administrator?



Quality early care and education programs play a vital role in the community. These programs must be staffed by individuals who possess the knowledge and skills appropriate to the field, and standards for the quality of these programs will continue to be upgraded in the coming years.

As a child care provider or director, you will have responsibility for the wellbeing and development of today's children who will be tomorrow's leaders. Salary per hour varies from \$8 to \$25 per hour, and individuals' salaries are typically influenced by their education level.

Several career options are available to those interested in becoming a child care provider or a child care administrator. One can complete the Child Development Associate or Child Care Administration Certificate in approximately one year, with courses scheduled in the evenings and on Saturdays. All course work completed for either certificate will apply toward the completion of an Associate of Applied Science degree. See the College of the Mainland Catalog online at www.com.edu.

For more information, call 409-933-8390.

Open Enrollment in Senior Adult Program Courses

Senior Adult Program course offerings are open to any student 18 or older. See (Senior trips and lectures are still only available to students 55 plus years of age.)

CHILD DEVELOPMENT

CHILD DEVELOPMENT – 7 HRS

Students will explore the developmental stages of children from birth through age 5. This class meets the Core Competency Area for Child Growth and Development.

Cost: In district: \$22 Out of district: \$27
SYN: 7348 CDEC-1032-108CL 09/13/14-09/13/14
S 08:30AM-04:30PM TVB 1310 S Kaiser

CULTURAL DIVERSITY – 7 HRS

Cultural diversity comprises more than ethnic celebrations. Participants will explore ways to celebrate diversity through experiences and social interactions. This class will identify ways to integrate diversity into the classroom (or center) in creative, significant ways. This course meets the Core Competency Area for Diversity.

Cost: In district: \$22 Out of district: \$27
SYN: 7349 CDEC-1032-109CL 09/20/14-09/20/14
S 08:30AM-04:30PM TVB 1310 T Roland

PREVENT, TEACH AND REINFORCE – 7 HRS

Participants will discover how to resolve persistent behavior challenges in the classroom with the research-based Prevent-Teach-Reinforce model. They will learn to use concepts from applied behavior analysis and positive behavior support to resolve even the most challenging classroom behaviors. This class meets the Core Competency Area for Responsive Interactions and Guidance.

Cost: In district: \$22 Out of district: \$27
SYN: 7350 CDEC-1032-111CL 09/27/14-09/27/14
S 08:30AM-04:30PM TVB 1310 R Castro

GETTING FAMILIES INVOLVED – 7 HRS

Participants will explore ways to address some of the challenges associated with fostering family involvement in early childhood programs. This course meets the Core Competency Area for Family and Community Relationships.

Cost: In district: \$22 Out of district: \$27
SYN: 7351 CDEC-1032-117CL 10/04/14-10/04/14
S 08:30AM-04:30PM TVB 1310 COM Faculty

3 R'S OF INFANT/TODDLER LITERACY – 7 HRS

Participants will explore techniques for teaching reading, writing and addition to infants and toddlers. Participants will learn to infuse play with education in a fun, enjoyable and developmentally appropriate way. This class meets the Core Knowledge Area for Learning Environments, Planning Framework, Curriculum and Standards.

Cost: In district: \$22 Out of district: \$27
SYN: 7353 CDEC-1032-110CL 10/11/14-10/11/14
S 08:30AM-04:30PM TVB 1310 E Plasek

BEGINNER TRAIN THE TRAINER – 7 HRS

Participants will learn innovative strategies for empowering adults to become active, responsible learners. This class meets the Core Competency Area for Administration.

Cost: In district: \$22 Out of district: \$27
 SYN: 7352 CDEC-1096-132CL 10/11/14-10/11/14
 S 08:30AM-04:30PM TVB 1335 R Castro

IT COSTS TO BE THE BOSS! – 7 HRS

If you're in charge, this course is for you! Students will explore the many facets, opportunities and challenges of administration. Topics include supervising staff, time management, maintaining relationships and much more. This course meets the Core Competency Area for Administration.

Cost: In district: \$22 Out of district: \$27
 SYN: 7354 CDEC-1096-113CL 10/18/14-10/18/14
 S 08:30AM-04:30PM TVB 1310 T Roland

PROFESSIONALISM IN THE WORKPLACE – 7 HRS

Participants will learn how to turn everyday experiences into opportunities to engage in lifelong learning. They will explore how interactions with colleagues, families and children can increase professionalism in the workplace. This course meets the Core Competency Area for Professionalism and Ethics.

Cost: In district: \$22 Out of district: \$27
 SYN: 7355 CDEC-1032-112CL 10/25/14-10/25/14
 S 08:30AM-04:30PM TVB 1310 COM Faculty

CHILD ABUSE AND NEGLECT – 7 HRS

Preventing child abuse is everyone's responsibility. This training helps students understand the typical profile of child abusers as well as the various forms and aspects of neglect and abuse. This course meets the Core Competency Area for Health, Safety and Nutrition.

Cost: In district: \$22 Out of district: \$27
 SYN: 7356 CDEC-1032-107CL 11/15/14-11/15/14
 S 08:30AM-04:30PM TVB 1310 E Plasek

ASSESSMENT – USE IT OR LOSE IT – 7 HRS

Participants will learn practical techniques for putting assessment into practice. This class meets the Core Competency Area for Observation and Assessment.

Cost: In district: \$22 Out of district: \$27
 SYN: 7357 CDEC-1032-123CL 11/22/14-11/22/14
 S 08:30AM-04:30PM TVB 1335 R Castro



Tonita Tucker
 COM Graduate, 2010

“The COM program was perfect for me. It was able to fit my schedule as a mom.”

Laughter and music fill Tonita Tucker's classes. Describing herself as “a kid at heart,” the teacher at the private elementary Our Lady of Lourdes Catholic School in Hitchcock delights in making music and physical education exciting for prekindergarten through sixth grade students.

“They all learn differently,” Tucker reflected. “They are all individuals. Certain students who don't excel academically excel in my classes. They remember every instrument.”

Always ready to tackle something new, Tucker revels in incorporating surprises into her classroom from balloon volleyball in P.E. to impromptu dancing in music. Sometimes she imitates British or other accents to snag a class' attention.

It's all in a day's work for Tucker, who landed her first job in education at her son's daycare after being laid off from her office job. There, Tucker found her passion: working with children.

“It just seemed so right. This is why I was put on this earth, to help children,” she reflected. “It's very rewarding.”

She just lacked one thing to advance in the field: a degree. She came to the hands-on COM Child Development Program, where she learned about education through volunteering, textbooks and observing teachers in all types of classrooms from prekindergarten through high school.

“I really liked (observing) because you see different teaching styles,” she explained. “The COM program was perfect for me. It was able to fit my schedule as a mom.”

“Ms. (Susan) Napoli was thorough,” said Tucker. “If you had a question about anything, she was always available to talk. She still is.”

“I had a goal. I was focused,” Tucker explained. “It was a big deal to show my kids if you work hard you can do anything.”

While teaching provides continual challenges, it also offers unsurpassed rewards.

“I'm happy to go to work everyday,” she said. “If students are having a bad day, I try to make them smile. They listen because they know I really care.”

GULF COAST SAFETY INSTITUTE

CENTER FOR RISK MANAGEMENT

Gulf Coast Safety Institute Center for Risk Management

The Center for Risk Management provides *free* safety and health training courses at the College of the Mainland through a generous grant from the Texas Mutual Insurance Company. Visit www.com.edu/rmi for the current list of class offerings.



For more information, call 409-933-8365.

HIGH-RELIABILITY SAFETY PROGRAM DEVELOPMENT – 8 HRS

This course will discuss program development at each level of an organization, which includes communication, hazard analysis, and the hierarchy of controls development and implementation.

Cost: In district: FREE Out of district: FREE
SYN: 7243 OSHT-1071-118CL 09/05/14-09/05/14
F 08:00AM-05:00PM GCSI 112 C Worden

HYDROGEN SULFIDE SAFETY – 8 HRS

This seminar provides a basic understanding of hydrogen sulfide's properties and health hazards. It discusses detection, proper handling, disposal, exposure warning signs and the use of personal protective equipment.

Cost: In district: FREE Out of district: FREE
SYN: 7246 OSHT-1071-119CL 09/19/14-09/19/14
F 08:00AM-05:00PM GCSI 112 N Stuart

ADVANCED ACCIDENT INVESTIGATION – 8 HRS

This course explores different ways to investigate accidents. Students will learn to determine root causes and develop corrective actions. Participants will use a variety of techniques to analyze accidents and help prevent future accidents. After completing this course, each student will be able to determine causal factors and recommendations; understand the theory of accidents, including the domino theory and multiple causation; use interview techniques to collect data; perform an events/causal factors analysis; and complete a cause-and-effect chart.

Cost: In district: FREE Out of district: FREE
SYN: 7248 OSHT-1071-120CL 10/03/14-10/03/14
F 08:00AM-05:00PM GCSI 112 J Oakley

ENVIRONMENTAL WASTE MANAGEMENT – 8 HRS

As companies strive to become environmentally friendly, there is a greater need for strategies on how to handle the waste streams. This class will cover the basics of an environmental waste management program and some strategies for improving your processes of managing waste streams.

Cost: In district: FREE Out of district: FREE
SYN: 7249 OSHT-1071-121CL 10/17/14-10/17/14
F 08:00AM-05:00PM GCSI 112 S Laughlin

THE EIGHT ATTRIBUTES OF CHARACTER DEFINED IN GREAT LEADERS – 8 HRS

Your ability to lead people is critical to your success. Common attributes define the character required to be a great leader. This course discusses each attribute and their application in the workplace with real-life stories and examples. By actively building on these attributes you can develop into a stronger leader and succeed personally and professionally.

Cost: In district: FREE Out of district: FREE
SYN: 7250 OSHT-1071-122CL 11/07/14-11/07/14
F 08:00AM-05:00PM GCSI 112 D Baker

MEDICAL SURVEILLANCE PROGRAMS – 8 HRS

Occupational medical surveillance is required under many of OSHA's chemical-specific regulations. This course covers how to develop a basic medical surveillance program for routine testing and monitoring, using hazard analysis and industrial hygiene monitoring results. It discusses pre-employment exams, routine testing, medical recordkeeping, post-exposure testing and National Institute of Occupational Safety and Health recommendations for other medical surveillance not specifically covered by OSHA standards. Additional topics may include the development of company-related occupational exposure limits.

Cost: In district: FREE Out of district: FREE
SYN: 7251 OSHT-1071-123CL 11/21/14-11/21/14
F 08:00AM-05:00PM GCSI 112 C Lewis

OCCUPATIONAL EXPOSURE TO CRYSTALLINE SILICA – 8 HRS

This seminar will discuss OSHA's proposed rule for respirable crystalline silica. It will discuss the health effects of silica exposure and the methods of monitoring and controlling exposure. The seminar will describe OSHA's rulemaking process, summarize the public commentary on the proposed rule and explain what to expect from OSHA as it finalizes the rule.

Cost: In district: FREE Out of district: FREE
SYN: 7593 OSHT-1071-124CL 12/05/14-12/05/14
F 08:00AM-05:00PM GCSI 112 M Seymour

GULF COAST SAFETY INSTITUTE CENTER FOR EMERGENCY MANAGEMENT AND PREPAREDNESS

The Center for Emergency Management and Preparedness at the Gulf Coast Safety Institute can assist your company or institution in the following areas:



- Emergency Operations Plan Review and Mentoring
- Incident Command System/ National Incident Management System Training
- Exercise Development, Delivery and Evaluation
- Hazardous Materials Training
- Fire Extinguisher Training

For more information, call 409-933-8162.

ICS300 – INTERMEDIATE INCIDENT COMMAND SYSTEM FOR EXPANDING INCIDENTS – 18 HRS

This course provides training on the use of multiple resources for personnel who require the application of the Incident Command System (ICS) during expanding incidents. This course expands upon information covered in the ICS-100 and ICS-200 courses. Target audience: State, county or local officials who may assume a supervisory role in expanding incidents or Type 3 incidents. Additional registration is required through www.preparingtexas.org. Prerequisites: FEMA IS-700, ICS 100 and 200.

Cost: In district: FREE Out of district: FREE
 SYN: 7318 OSHT-1091-307CL 09/15/14-09/16/14
 TW 08:00AM-06:00PM GCSI 112 P McIntosh

ICS400 – ADVANCED INCIDENT COMMAND SYSTEM, COMMAND AND GENERAL STAFF – 14 HRS

This course provides training and resources for personnel who require advanced application of the Incident Command System (ICS). The course expands upon information covered in the ICS-100 through ICS-300 courses. Target audience: State, county or local officials who may assume a supervisory role in expanding incidents or Type 3 incidents. Additional registration is required through www.preparingtexas.org. Prerequisites: FEMA IS-100, 200, 700 and 800.

Cost: In district: FREE: Out of district: FREE
 SYN: 7319 OSHT-1091-308CL 09/17/14-09/18/14
 THF 08:00AM-05:00PM GCSI 112 P McIntosh

Gulf Coast Safety Institute Small Business Safety and Health Center

Save these dates for our Quarterly Lunch and Learn

Oct. 16 and Dec. 11, 2014
11 a.m. to 1 p.m.
Gulf Coast Safety Institute

For more information, call 409-933-8338 or email gsharpe@com.edu.

SMALL BUSINESS SAFETY AND HEALTH CENTER

WORKPLACE SAFETY FOR SMALL BUSINESS OWNERS, MANAGERS AND SUPERVISORS – 24 HRS

Do you know what OSHA regulations apply to your business or what OSHA requirements may impact your organization? The Gulf Coast Safety Institute's Small Business Safety and Health Center offers a free online curriculum to help you understand the requirements as they apply to any small business. Once you complete this course, you will have the fundamental knowledge required to develop, implement and manage the safety processes related to your organization. You will also prepare a few of the minimum documents that your organization needs for OSHA compliance.

All students enrolling in their first Internet course at College of the Mainland must complete the New Student Orientation and Online Learner Workshop prior to beginning this course. Students should contact the instructor via email to schedule their orientation at gsharpe@com.edu.

Cost:	In district: FREE	Out of district: FREE	
SYN: 7287 OSHT-1091-209IN		09/01/14-02/28/15	
INTERNET			G Sharpe
SYN: 7289 OSHT-1091-210IN		10/01/14-03/31/15	
INTERNET			G Sharpe
SYN: 7304 OSHT-1091-212IN		11/01/14-04/30/15	
INTERNET			G Sharpe
SYN: 7311 OSHT-1091-213IN		12/01/14-05/31/15	
INTERNET			G Sharpe

Gulf Coast Safety Institute Small Business Safety and Health Center

The Small Business Safety and Health Center at the Gulf Coast Safety Institute is your resource to stay up-to-date on the latest information and trends in occupational safety and health that impact small business.



Establishing a safe and healthful working environment requires every employer and worker to make safety and health a core value. The Small Business Safety and Health Center can be your resource to figure out which changes in regulations you are accountable for, what compliance means to your business and how to deal with OSHA should they arrive. Register for our online course, Workplace Safety and Health for Small Business Owners, Managers and Supervisors.

For more information, call 409-933-8338 or email gsharpe@com.edu.

PERSONAL ENRICHMENT



STUDIO ART – 96 HRS

This course allows beginning to advanced noncredit students to participate in any of the three 2-D studio art courses taught by professor Mark Greenwalt. Students are expected to actively participate within the collaborative studio environment and broadly pursue course objectives along with their credit student peers. Students have the option of attending Drawing/Life Drawing on Monday and Wednesday from 9:30 a.m. to 12:20 p.m., Design on Tuesday and Thursday from 9:30 a.m. to 12:20 p.m., or Painting on Monday and Wednesday from 2-4:50 p.m. For more information regarding specific courses, contact Mark at 409-933-8673 or mgreenwalt@com.edu. The lab fee for each class is \$20.

Cost: In district: \$276 Out of district: \$281
SYN: 7347 ARTSL-2000-120CL 08/25/14-12/12/14
FAB 130 M Greenwalt



Kamila Szczesna
COM CE Art Student

Read Kamila's story on page 52.



FITNESS AND RECREATION

Fitness and Recreation Offers New Membership Options



Adults, youth and seniors now pay for fitness memberships by semester (fall, spring and summer).

- Adults: \$40 per semester
- Youths: \$30 per semester
- Seniors: \$30 per semester

Please note: A \$5 fee is added to out-of-district memberships.

For more information, call 409-933-8174.

OBTAINING MEMBERSHIPS

Fitness memberships are now available for an entire semester (Fall, Spring or Summer). You must have a current ID card to be admitted into the gym facility. Memberships may be purchased at the Continuing Education Office in the Technical- Vocational Building, Room TVB-1475 or by calling 409-933-8586. New members must take the paid receipt to the gym front lobby to obtain a membership ID card. Renewing members must take the paid receipt and expired ID card to the gym front lobby to renew the ID card.

ADULT FITNESS MEMBERSHIPS

Cost: In district: \$40 Out of district: \$45

SYN: 7790 FIT-CARD-ADSM (Semester membership)

09/01/14-12/12/14

MTWTHF 05:00AM-10:00PM

SSU 08:00AM-04:00PM

Cost: In district: \$120 Out of district: \$125

SYN: 7575 FIT-CARD-ADSM (Annual membership)

09/01/14-08/31/15

MTWTHF 05:00AM-10:00PM

SSU 08:00AM-04:00PM

YOUTH FITNESS MEMBERSHIPS

Cost: In district: \$30 Out of district: \$35

SYN: 7572 FIT-CARD-YOUSH (Semester membership)

09/01/14-12/12/14

MTWTHF 05:00AM-10:00PM

SSU 08:00AM-04:00PM

Cost: In district: \$90 Out of district: \$95

SYN: 7576 FIT-CARD-YOUSH (Annual membership)

09/01/14-08/31/15

MTWTHF 05:00AM-10:00PM

SSU 08:00AM-04:00PM

SENIOR FITNESS MEMBERSHIPS

Cost: In district: \$30 Out of district: \$35

SYN: 7573 FIT-CARD-SRSM (Semester membership)

09/01/14-12/12/14

MTWTHF 05:00AM-10:00PM

SSU 08:00AM-04:00PM

Cost: In district: \$90 Out of district: \$95

SYN: 7574 FIT-CARD-SRAN (Annual membership)

09/01/14-08/31/15

MTWTHF 05:00AM-10:00PM

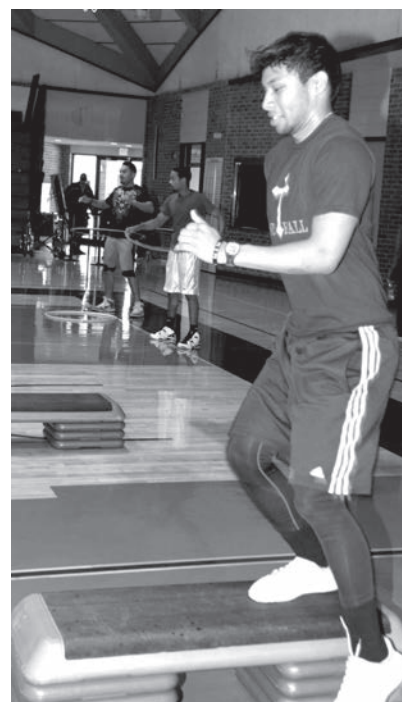
SSU 08:00AM-04:00PM

MONTHLY PASS

This pass provides access to the gym for one month, beginning on the first day of the month and ending on the last day of the month. Monthly passes must be purchased in the Continuing Education Office or in the Enrollment Center.

Cost: In district: \$25 Out of district: \$30

MONTH	SYN	COURSE SECTION
Sept.	7578	WELL-1003-101CL
Oct.	7579	WELL-1003-102CL
Nov.	7580	WELL-1003-103CL
Dec.	7583	WELL-1003-104CL



DAILY PASS

\$5 (Purchased at the gym front desk)

GYM FLOOR (BASKETBALL COURTS)

Check on availability at the front desk.

RACQUETBALL

Check at the front desk; courts available by reservation only,

POOL HOURS

**The pool will be closed until further notice.
We are sorry for the inconvenience.**

WEIGHT ROOM AND CARDIO ROOMS

Must be 16 or older to enter and work out in strength and cardio rooms.

Rooms 132, 135, 120 and 119

Monday – Friday 5 a.m. – 10 p.m.

Saturday – Sunday 8 a.m. – 4 p.m.

SAUNA

(18 years and older)

M, T, W, TH, F 5 a.m. – 9 p.m.

VOLLEYBALL LEAGUES

The volleyball league allows community members and COM students to play volleyball on a friendly yet competitive level. The first practice nights will be Sept. 2 and 4, 2014, from 6:30-8 p.m. Price is per team registration.

VOLLEYBALL A-LEAGUE – 24 HRS

Cost: In district: \$225 Out of district: \$230

SYN: 7568 WELL-5088-204CL 09/04/14-12/04/14

TH 06:00PM-08:00PM GYM 122

VOLLEYBALL B-LEAGUE – 24 HRS

Cost: In district: \$225 Out of district: \$230

SYN: 7569 WELL-5088-205CL 09/04/14-12/04/14

TH 08:00PM-10:00PM GYM 122

VOLLEYBALL – CO-ED 4'S LEAGUE – 24 HRS

Cost: In district: \$150 Out of district: \$155

SYN: 7570 WELL-5088-206CL 09/02/14-12/02/14

T 07:00PM-10:00PM GYM 122

FITNESS CLASSES

BODY SCULPTING – 27 HRS

This class shows how to tone and stretch all three major muscle groups using a variety of strength-training techniques and equipment. A student ID will be required.

Cost: In district: \$40 Out of district: \$45

SYN: 7517 EXER-7051-101CL 09/03/14-12/03/14

MW 10:15AM-11:15AM GYM WEST 005 G Devona

SYN: 7518 EXER-7051-102CL 09/02/14-12/04/14

TTH 09:30AM-10:30AM GYM WEST 005 G Devona

SYN: 7520 EXER-7051-201CL 09/03/14-12/03/14

MW 06:00PM-07:00PM GYM WEST 005 G Devona

TEXAS TWO-STEP – 14 HRS

This fast-paced, high-energy dance style is fun and exciting. Participants will learn dance moves, including turns, sweetheart wraps, spins and more. Individuals may join this class at any time during the semester. A student ID will be required.

Cost: In district: \$40 Out of district: \$45

SYN: 7519 EXER-7008-201CL 09/08/14-12/08/14

M 07:00PM-08:00PM GYM B Whistler

SPINNING – 27 HRS

Indoor cycling offers a fun and effective way to burn fat and improve cardiovascular endurance. Participants learn cycling techniques and tips in a fast-paced workout set to music. Individuals may join this class at any time during the semester. A student ID will be required.

Cost: In district: \$48 Out of district: \$53

SYN: 7521 EXER-7053-101CL 09/03/14-12/03/14

MW 05:30PM-06:30PM GYM 112A B Wright

ZUMBA – 27 HRS

Join the revolution that's spreading like wildfire. The Zumba program fuses Latin rhythms and easy-to-follow moves to create a one-of-a-kind fitness program that will tone and sculpt participant's bodies while burning unwanted fat. Participants may join this class at any time during the semester. A student ID will be required.

Cost: In district: \$48 Out of district: \$53

SYN: 7522 EXER-7082-101CL 09/02/14-12/04/14

TTH 12:30PM-01:30PM GYM L Moore

SYN: 7523 EXER-7082-201CL 09/02/14-12/04/14

TTH 06:45PM-07:45PM GYM L Moore

Save This Schedule!

CE offers hundreds of classes.
One is just right for you!

SENIOR ADULT PROGRAM

LOCATION CODES

- FAB FINE ARTS BUILDING**
College of the Mainland
1200 Amburn Rd.
Texas City Campus
409-933-8348
- GYM COLLEGE OF THE MAINLAND**
1200 Amburn Rd.
Texas City Campus
409-933-8422
- HPL HITCHCOCK PUBLIC LIBRARY**
8005 Barry Avenue
Hitchcock, TX 77563
- LRC LEARNING RESOURCES CENTER**
1200 Amburn Rd.
Texas City Campus
409-933-8422
- LMCR LEARNING CENTER-DELMAR**
Senior Adult Program Office
1130 Delmar
La Marque, TX 77568
409-933-8226 / 409-933-8912
- POOL GYM**
1200 Amburn Rd.
College of the Mainland
Texas City Campus
409-933-8422
- WJCC WAYNE JOHNSON COMMUNITY CENTER**
4102 FM 519
La Marque, TX 77568
409-934-8148
- CLC COM NORTH COUNTY LEARNING CENTER**
200 Parker Ct.
League City, TX 77573
281-332-1800

**The pool will be closed
until further notice.
We are sorry for the
inconvenience.**

SENIOR ADULT REGISTRATION

Registration for Fall 2014 semester begins Aug. 4, 2014.

SENIOR ADULT DISCOUNT

Seniors (55+) pay just 50 percent of the tuition on selected CE classes located in previous sections, plus all fees (facility, nonresident, online, supplies, etc.).

MESSAGE FROM THE DIRECTOR

Welcome to the College of the Mainland Senior Adult Program. We hope you will join us this fall for classes, lectures and trips. Inside these pages you will discover ways to express your creative side, learn new skills, connect with others, stay current on technology, have fun and explore a world of opportunity. COM prides itself on having instructors who are passionate about their subjects and innovative in their teaching.



Mark your calendar for these important dates:

- | | |
|------------------|--|
| Aug. 4 | Fall registration begins |
| Sept. 2 | Fall classes begin |
| Nov. 27-28 | COM closed for Thanksgiving holidays |
| Dec. 2 | Spring registration begins |
| Dec. 12 | Annual Senior Adult Luncheon at 11:30 a.m. in the gym on the main campus |
| Dec. 18 - Jan. 4 | COM closed for Winter Break |

Have you taken a trip with us yet? This is a great way to get to know other seniors and stay involved in your community. Most of our trips fill up quickly, so find the one you would like to go on and register soon.

I challenge you to try a new class, something that has piqued your curiosity or that you have always wanted to try. You might surprise yourself and make some new friends while you're at it!

We strive to offer fun, exciting and relevant courses for senior adults and have several new classes in this schedule. If you have a suggestion for other new courses, please call the Senior Adult Program Office at 409-933- 8226.

Please join us in welcoming Maegan Guzman, the new administrative assistant for the Senior Adult Program. Maegan's experience will be a great asset to our program. The next time you are near the COM Learning Center-Delmar location, please stop by to meet her.

Alesha Aulds
aaulds@com.edu
409-933-8432

SENIOR ADULT PROGRAM VISION

The College of the Mainland Senior Adult Program will be respected regionally and nationally for excellence in the development and delivery of innovative educational opportunities for adults age 55 and above.

SENIOR ADULT PROGRAM MISSION

The College of the Mainland Senior Adult Program's mission is to provide lifelong learning opportunities for senior adults 55 years of age and older by offering personal enrichment classes in a positive, accepting, and intergenerational environment. The Senior Adult Program staff collaborates with academic departments and the community to develop programs that meet society's existing and emerging educational needs for senior adults.

SENIOR ID CARD INFORMATION

Senior adults who register for a Senior Adult Program (SENR) class or Senior Fitness Membership to use the gym on the main campus will be provided a free Senior ID Card to gain access into the gym facility.

All other senior adults who wish to have a Senior ID for the purpose of the benefits listed below will be required to pay a one-time \$5 fee. If the ID card is lost or stolen, the replacement cost is \$5. Cash payments can be accepted at the gym front desk. Debit or credit card payments must be made at the cashier located in the Enrollment Center, and the receipt will need to be taken to the gym front desk.

The ID machine is located in the gym at the front desk. Please take a valid photo ID with you to have your senior ID made.

After registering each semester (Fall, Spring, Summer) for a Senior Fitness Membership, you must take the Senior ID card to the gym front desk staff for activation.

For SENR Fitness Memberships, after registering EACH semester (Fall, Spring, Summer), The SENR ID card must be taken to the GYM Front desk staff for activation.

Seniors possessing a valid senior ID card are entitled to the following COM benefits:

- Use of the COM Library
- Use of the Innovations Computer Lab in TVB-1324
- Discount on COM Cosmetology services at The Salon; call 409-933-8480 for more information.
- Discount on tickets for COM Community Theatre productions; call 409-933-8345 for more information.
- Blood pressure reading with an automated monitor is available daily in Senior Adult Program Office.

REGISTRATION FOR SENIOR ADULT PROGRAM

Registration for the Fall 2014 semester begins Monday, Aug. 4, and continues throughout the semester until classes are filled. You may register on the computers at the COM Learning Center-Delmar from Aug. 4 - 30. For additional methods of registration, including by phone, please see page 3 of this schedule. Please note that if you plan to pay by cash, check or money

order, or if this is your first time to register as a Senior Adult student, you must register at the Enrollment Center on the main campus and show proof of age.

CANCELLATION OF CLASSES

If a class is canceled by the college, an automatic 100 percent refund of tuition and fees is initiated. To drop, you must notify the Continuing Education Office (409-933-8586) no later than one business day prior to the class start date to receive a refund.

CANCELLATION OF TRIPS

If for any reason you cannot attend a trip which you are registered for, you must call the Senior Adult Program Office at 409-933-8226 or 409-933-8912 at least 48 hours prior to departure. Refunds are given on a case-by-case basis, according to the refund dates listed in each trip description.

WAITING LISTS

Want to attend a class or trip that is full? Contact the Senior Adult Program Office at 409-933-8226 or 409-933-8912 to place your name on a waiting list.

PARKING AT THE SENIOR ADULT PROGRAM BUILDING

(1130 Delmar, La Marque)

There is easy access to parking in front of and behind the Senior Adult Program building. The entrance and exit to the building is located in the front of the building.

HANDICAPPED-ACCESSIBLE PARKING

Need a handicapped-parking permit? Contact Campus Police at 409-933-8403.

COURTESY RIDE

Need a ride from COM's parking lot to any of the buildings on campus? Call Campus Police at 409-933-8403. A police officer or employee will pick you up and take you to the building.

OTHER FACILITY HOURS

- COM Cosmetology Lab – Gulfway Plaza Outlet Mall in La Marque
Call 409-933-8480 to make an appointment.

Open Thursday and Friday 8:30 a.m. – 5 p.m.

- Innovations Lab, TVB-1324, 409-933-8370

Monday 7 a.m. – 8:30 p.m.

Tuesday, Wednesday, Thursday 7 a.m. – 9:30 p.m.

Friday 8 a.m. – noon

- Library, 409-933-8205

Monday–Thursday 8 a.m. – 9 p.m.

Friday 8 a.m. – 5 p.m.

Saturday 9 a.m. – 1 p.m.

Present a Senior ID card at the Library circulation desk to obtain a library card at no cost.

SENIOR ADULT PROGRAM COURSE OFFERINGS IN ALPHABETICAL ORDER

ART: BEADED FASHION JEWELRY – 36 HRS

Do you have retro jewelry or one mismatched earring after losing the other? Sign up to give old jewelry a makeover. Students will learn wire wrapping and can even make jewelry for children. Bring jewelry, jewelry tools, glues for metal and glass, beading wire, Tiger Tails, crimps and finishing ends. This class also takes a field trip to a bead store.

Cost: Senior: \$15 In district: \$42 Out of district: \$47
 SYN: 7367 SENR-7048-101CL 09/03/14-11/19/14
 W 09:00AM-12:00PM LMCR 111 B Vollmer

ART: BRAZILIAN EMBROIDERY, BEGINNER TO ADVANCED – 36 HRS

Students may choose to learn the art of crochet or Brazilian embroidery, which uses high-sheen thread. The instructor will provide supplies for Brazilian embroidery, but participants should bring a #5 and #6 hoop. To complete a crochet project, participants will need a size G or H crochet hook and yarn.

Cost: Senior: \$15 In district: \$42 Out of district: \$47
 SYN: 7368 SENR-7046-101CL 09/04/14-11/20/14
 TH 09:00AM-12:00PM LMCR 112 C Walker

ART: BRAZILIAN EMBROIDERY, INTERMEDIATE TO ADVANCED – 36 HRS

Students may choose to learn the art of Brazilian embroidery, chicken scratch embroidery or crochet. The instructor will have the supplies for Brazilian embroidery, but participants will need a #5 and #6 hoop. For chicken scratch embroidery, participants will need their choice of four-count-per-inch cotton gingham fabric and DMC embroidery thread in white and in a color that will contrast with their fabric choice. For crochet, participants will need a size G or H crochet hook and yarn.

Cost: Senior: \$15 In district: \$42 Out of district: \$47
 SYN: 7369 SENR-7033-101CL 09/04/14-11/20/14
 TH 12:00PM-03:00PM LMCR 112 C Walker

ART: DRAWING FROM PHOTOGRAPHS – 36 HRS

This class combines the Drawing From Photographs and Basic Colored Pencils classes. When participants have completed a value (black and white) drawing, they may advance to colored pencils. New students should buy supplies before the first class. For a supply list, stop by or call the Senior Adult Program Office at 409-933-8226.

Cost: Senior: \$15 In district: \$42 Out of district: \$47
 SYN: 7370 SENR-7022-101CL 09/04/14-11/20/14
 TH 01:00PM-04:00PM LMCR 111 S Karjala

ART: FLORAL ARRANGING – 36 HRS

Learn to create a flower arrangement, design wreaths and make beautiful ribbon bows. Supplies needed include a container, hot glue gun, wreath, flowers, dry foam, wired ribbon and wire cutters. Students must pay a \$10 fee to the instructor to purchase picks.

Cost: Senior: \$15 In district: \$65 Out of district: \$70
 SYN: 7371 SENR-7016-101CL 09/02/14-11/18/14
 T 09:00AM-12:00PM LMCR 107

ART: FUSION GLASS JEWELRY, BEGINNER – 36 HRS

Participants will join in the fun of designing jewelry. Students will learn how to score glass and the art of mixing basic colors of fusion glass with dichroic (reflective) glass, paints and other mediums. Jewelry will be fired in the kiln. Participants will be able to make five pieces a week, and no experience is necessary. Students must pay a \$10 consumables fee to the instructor on the first class day, and a supply list will be provided. Due to limited space, students may take only one fusion glass jewelry class per semester.

Cost: Senior: \$15 In district: \$42 Out of district: \$47
 SYN: 7372 SENR-7017-101CL 09/08/14-11/24/14
 M 01:00PM-04:00PM LMCR 111 B Vollmer

ART: FUSION GLASS JEWELRY, ADVANCED – 36 HRS

This course is a return to the fun of glass fusion techniques. Participants will focus on inventive designs and make at least six pieces of jewelry, art or pictures. The instructor will teach wire wrapping, so participants should bring jewelry tools. Due to limited space, students may take only one fusion glass jewelry class per semester. Students must pay a \$10 consumables fee to the instructor the first class day. Prerequisite: Three semesters of Fusion Glass Jewelry, Beginner are suggested before taking the advanced class.

Cost: Senior: \$15 In district: \$42 Out of district: \$47
 SYN: 7373 SENR-7018-101CL 09/08/14-11/24/14
 M 09:00AM-12:00PM LMCR 111 B Vollmer

ART: MOSAIC – 36 HRS

Participants will learn from a mosaic artist how to make modern projects. This class is for beginners as well as more advanced students. Participants will leave this class with a completed project. The first day will be an introduction to the art, and the instructor will provide a list of supplies to purchase. Students must pay a \$5 supply fee to the instructor the first day.

Cost: Senior: \$15 In district: \$42 Out of district: \$47
 SYN: 7374 SENR-7019-101CL 09/05/14-11/21/14
 F 01:00PM-04:00PM LMCR 112 B Holmes

ART: PAINTING GOURDS – 36 HRS

Participants will cut designs and make birdhouses, fall gourds and much more. Participants will learn wood burning, and no painting talent is needed. Gourds are provided at a cost. Reference materials, saws, paint, brushes, cleaning tools, wood burning tools and drills are provided.

Cost: Senior: \$15 In district: \$42 Out of district: \$47
 SYN: 7375 SENR-7039-101CL 09/02/14-11/18/14
 T 01:00PM-03:00PM LMCR 107 G Conz

ART: PAINTING WITH ACRYLICS – 36 HRS

This class is for beginner and intermediate students. The first two class sessions will focus on techniques. The remaining classes will discuss painting palm trees, birds, tropical flowers, seascapes and rural landscapes. The instructor will provide supplies for beginners on the first day and give a list of supplies that may be purchased from craft stores.

Cost: Senior: \$15 In district: \$42 Out of district: \$47

SYN: 7376 SENR-7037-101CL 09/03/14-11/19/14

W 09:00AM-12:00PM LMCR 107 P Lingo

ART: PAINTING WITH OILS – 36 HRS

Participants will work with the instructor to improve their techniques and skills in oil painting. Participants may start from scratch or bring their present work. Students may also bring supplies that they have. An additional supply list will be given to students at the first class.

Cost: Senior: \$15 In district: \$42 Out of district: \$47

SYN: 7377 SENR-7010-101CL 09/02/14-11/18/14

T 09:00AM-12:00PM LMCR 111 L Johnson

SYN: 7378 SENR-7010-102CL 09/04/14-11/20/14

TH 01:00PM-04:00PM LMCR 107 K Wells

ART: PAINTING WITH WATERCOLORS – 36 HRS

Participants will learn new methods of color, paint, application and design. This is an ongoing class designed for the more seasoned artist as well as those wanting to brush up on their techniques. A list of necessary supplies will be provided at the first class.

Cost: Senior: \$15 In district: \$42 Out of district: \$47

SYN: 7380 SENR-7035-102CL 09/04/14-11/20/14

TH 09:00AM-12:00PM LMCR 111 L Johnson

SYN: 7379 SENR-7035-101CL 09/08/14-11/24/14

M 01:00PM-04:00PM LMCR 112 S Anderson

ART: PAPER MACHE ANIMALS – 36 HRS

Students will construct four-legged paper mache animals from recycled/repurposed materials. Students will advance to more challenging projects and learn to build the armature (skeleton), create the form and finish the sculpture.

Cost: Senior: \$15 In district: \$42 Out of district: \$47

SYN: 7381 SENR-7040-101CL 09/03/14-11/19/14

W 01:00PM-04:00PM LMCR 112 N House

ART: PHOTOGRAPHY AS A HOBBY (EXPERIENCED) – 36 HRS

This course will teach photography for the hobbyist or artist, not for the professional. Intended for students with more than a little experience, this practical, hands-on course will teach them how to operate their digital cameras and save images at a level somewhat higher than in the other photography course. Students will also discover how to print, frame and exhibit their prints at a more advanced level. Students are required to bring an SLR or point-and-shoot camera with its manual to each class.

Cost: Senior: \$15 In district: \$42 Out of district: \$47

SYN: 7382 SENR-7047-101CL 09/08/14-11/24/14

M 01:00PM-04:00PM LMCR 106 P Bowman

ART: PHOTOGRAPHY FOR THE INEXPERIENCED – 36 HRS

This course will teach photography for the hobbyist or artist, not for the professional. Intended for students with very little or no experience, this practical, hands-on course will teach them how to operate their digital cameras and save and edit images at the most basic level. Students will also discover how to print, frame and exhibit their prints. Students must bring a single-lens reflex (SLR) or point-and-shoot camera with its manual to each class.

Cost: Senior: \$15 In district: \$42 Out of district: \$47

SYN: 7049 SENR-7049-101CL 09/08/14-11/24/14

M 09:00AM-12:00PM LMCR 106 P Bowman

ART: STAINED GLASS, BEGINNER – 24 HRS

Participants will use the copper foil technique of making stained glass projects. All supplies needed for this class may be purchased from the instructor. Students may rent equipment for \$5 per week or purchase equipment. Call the Senior Adult Program Office at 409-933-8226 for a list of supplies. Due to limited space, students may be limited to one stained glass class per semester.

Cost: Senior: \$15 In district: \$42 Out of district: \$47

SYN: 7383 SENR-7003-101CL 09/09/14-11/25/14

T 08:00AM-10:00AM HPL J Mingus

ART: STAINED GLASS, ADVANCED – 24 HRS

This class is for students with experience working with stained glass. Due to limited space, students may be limited to one stained glass class per semester.

Cost: Senior: \$15 In district: \$42 Out of district: \$47

SYN: 7384 SENR-7004-101CL 09/09/14-11/25/14

T 10:30AM-12:30PM HPL J Mingus

ART: STAINED GLASS ADVANCED, LEAD CAME METHOD – 24 HRS

Students with experience working with stained glass will learn the advanced lead came method, in which the glass is supported by metal channeling (comes). Students will develop their skills in this lengthy and detailed process, which includes soldering seams to create large works of glass art.

Cost: Senior: \$15 In district: \$42 Out of district: \$47

SYN: 7385 SENR-7044-101CL 09/09/14-11/25/14

T 02:00PM-04:00PM HPL P Stettler

COMPUTER: ABSOLUTE BEGINNERS – 24 HRS

This class is perfect for those who have rarely used computers or have forgotten what they once knew about them. The class will cover how to get a computer up and running and how to shut it down safely. Students will learn to make Microsoft Windows "friendlier," or personalized, and basic hardware differences. This class includes an introduction to keyboarding, email and Facebook. Students should bring a USB flash/jump drive to class.

Cost: Senior: \$15 In district: \$74 Out of district: \$79

SYN: 7386 SENR-7011-101CL 09/05/14-11/21/14

F 10:00AM-12:00PM LMCR 106 C Mickens

COMPUTER: APPLICATIONS FOR BEGINNERS – 24 HRS

In this course students will learn the potential of Microsoft Office. Using Microsoft Office applications, participants can create letters, reports, presentations, worksheets and databases. This class will cover how to use the document wizards of Microsoft Word, PowerPoint, Excel and Access. Students will need to bring a USB flash/jump drive to class.

Cost: Senior: \$15 In district: \$74 Out of district: \$79

SYN: 7387 SENR-7036-101CL 09/05/14-11/21/14

F 01:00PM-03:00PM LMCR 106 C Mickens

COMPUTER: DIGITAL STORYBOOKING – 36 HRS

This class offers a fantastic alternative to hiding precious family photos in boxes or on the computer. Students will learn to use the Heritage Makers System on a computer to build a photo project. The basics are the same for all Heritage Maker projects. Students will need to bring their precious photos.

Cost: Senior: \$15 In district: \$74 Out of district: \$79

SYN: 7392 SENR-7034-101CL 09/03/14-11/19/14

W 09:00AM-12:00PM LMCR 106 J Hoggatt

COMPUTER: IPAD/IPHONE BEGINNER – 25 HRS

Are you thrilled to have a new iPad but not sure exactly how to use it? Unlock the full potential of this technology with this information-packed course. Students will learn how to upload apps, send emails, take photos/screenshots, make videos, organize photo albums, upload iTunes cards, update a calendar and address book, use maps and create documents with Pages. It will also demonstrate how to use FaceTime, iMessage, Skype, Facebook and Twitter. Students will also have time to ask the instructor those hard-to-answer questions. Please note: Students must bring their iPad/iPhone to class.

Cost: Senior: \$15 In district: \$130 Out of district: \$135

SYN: 7388 SENR-7045-101CL 09/02/14-11/18/14

T 09:30AM-12:00PM LMCR 106 C Grim

SYN: 7389 SENR-7045-102CL 09/02/14-11/18/14

T 12:30PM-03:00PM LMCR 106 C Grim

SYN: 7390 SENR-7045-103CL 09/04/14-11/20/14

TH 09:30AM-12:00PM LMCR 106 COM Faculty

SYN: 7391 SENR-7045-104CL 09/04/14-11/20/14

TH 12:30PM-03:00PM LMCR 106 COM Faculty

EXERCISE: DANCE FOR HEALTH – 27 HRS

Participants will get in shape in a fun and relaxing atmosphere. They will learn the basic steps for line dancing, group dancing and square dancing. This is the perfect way to get moving and stay young. No partner is required. Students may register at any time if the class is not full.

Cost: Senior: \$15 In district: \$42 Out of district: \$47

SYN: 7393 SENR-7001-101CL 09/02/14-12/04/14

TTH 10:45AM-11:45PM B Whistler

EXERCISE: DYNA-BANDS – 27 HRS

Dyna-Bands are a tool to safely improve muscle strength, endurance, range of motion and flexibility through resistance exercise, which makes everyday activities easier and fatigue less of a problem. This tool is gentle enough for nearly everyone and can be safely done with an instructor.

Cost: Senior: \$15 In district: \$42 Out of district: \$47

SYN: 7394 SENR-7059-101CL 09/02/14-12/04/14

TTH 08:15AM-09:15AM T Belcher

EXERCISE: LINE DANCING – 27 HRS

Line dancing not only blends exercise and recreation, it is also a fun way to meet people and improve coordination. This class is for those who have never had a line dancing class. The only equipment needed is footwear that slides and swivels easily and does not stick to the floor.

Cost: Senior: \$15 In district: \$42 Out of district: \$47

SYN: 7396 SENR-7006-201CL 09/02/14-12/04/14

TTH 05:30PM-06:30PM GYM 112B P Horton

EXERCISE: PILATES – 27 HRS

Pilates strengthens the muscles that support the spine (the neck, shoulders, abs, hips and thighs) to bring balance to the body. Most body aches and pains are due to muscular imbalance. Pilates helps to realign the spine in order to decrease tension, increase flexibility and strengthen the body from the inside out.

Cost: Senior: \$15 In district: \$42 Out of district: \$47

SYN: 7397 SENR-7075-101CL 09/02/14-12/04/14

TTH 04:15PM-05:15PM GYM 005 S Deshotel

EXERCISE: RHYTHMIC STRENGTHENING AND STRETCHING – 27 HRS

This class will combine yoga, pilates and low-impact interval exercises set to music. This class is designed for students needing a slower-paced exercise class. The instructor will work with the student for exercise modification, if needed.

Cost: Senior: \$15 In district: \$42 Out of district: \$47

SYN: 7822 SENR-7080-101CL 09/03/14-12/03/14

MW 12:30PM-01:30PM GYM WEST 005 J Asmussen

SYN: 7823 SENR-7080-102CL 09/02/14-12/04/14

TTH 10:45AM-11:45AM GYM WEST 005 J Asmussen

EXERCISE: SIT-N-FIT (INTERMEDIATE) – 27 HRS

This is an enjoyable, structured, rhythmic exercise class that will tone muscles and increase endurance. This class includes chair and floor exercises set to music.

Cost: Senior: \$15 In district: \$42 Out of district: \$47

SYN: 7395 SENR-7002-101CL 09/02/14-12/04/14

TTH 09:30AM-10:30AM GYM 112B R Kennedy

www.com.edu/senioradults

EXERCISE: TOTAL BODY FITNESS – 27 HRS

Participants will learn to properly and safely stretch, warm up, perform abdominal exercises and execute upper and lower-body exercises. They will reap cardiovascular benefits while doing fun, low-impact dance aerobics. The class also provides health and nutrition updates. This class is appropriate for participants who never exercise as well as those who frequent the gym. Participants should wear comfortable, loose-fitting clothes and bring a water bottle and hand towel.

Cost: Senior: \$15 In district: \$42 Out of district: \$47

SYN: 7398 SENR-7070-101CL 09/03/14-12/03/14

MW 02:00PM-03:00PM GYM 005 T Belcher

SYN: 7399 SENR-7070-102CL 09/03/14-12/03/14

MW 09:00AM-10:00AM GYM 005 T Belcher

EXERCISE: WEIGHT TRAINING – 27 HRS

Participants will learn to safely and properly perform a circuit weight-training program, which should result in reduced resting blood pressure, increased muscle and decreased fat. Participants do not have to be strong in order to do weight training exercises; participants will get stronger by performing weight-training exercises. Participants will need a clipboard, pencil, water bottle, hand towel and weight gloves with wraparound wrist support. They should wear comfortable, loose-fitting clothes.

Cost: Senior: \$15 In district: \$42 Out of district: \$47

SYN: 7401 SENR-7076-102CL 09/02/14-12/04/14

TTH 09:30AM-10:30AM GYM 132 T Belcher

SYN: 7400 SENR-7076-101CL 09/03/14-12/03/14

MW 08:00AM-09:00AM GYM 132 T Belcher

EXERCISE: YOGA – 36 HRS

Participants will learn the art of slow, measured movements to help develop strong muscles, increase agility and flexibility and reduce the effects of the aging process. Through the art of breathing, relaxation and self-awareness, participants will experience increased energy levels and decreased aches and pains. Yoga positions are done in the chair and on the floor. Participants should bring a towel or blanket for comfort in lying down.

Cost: Senior: \$15 In district: \$42 Out of district: \$47

SYN: 7402 SENR-7071-101CL 09/02/14-11/24/14

MTW 11:30AM-12:30PM WJCC B Lambert

SYN: 7403 SENR-7071-102CL 09/02/14-11/24/14

MTW 01:00PM-02:00PM WJCC B Lambert

LIFE STORY WRITING – 24 HRS

Everyone has a story to tell. All of our stories matter, and our children and great-grandchildren will enjoy them for years to come. The instructor will offer creative writing tips and editing help in recording personal stories.

Cost: Senior: \$15 In district: \$42 Out of district: \$47

SYN: 7405 SENR-7013-101CL 09/02/14-11/18/14

T 01:00PM-03:00PM LMCR 111 J Payne

PIANO I – 12 HRS

Students who have always wanted to learn to play the piano will learn to read music and play familiar tunes. The required texts are "Older Beginner Piano" (Level 1) by James Bastien and "Schaum Note Speller" (Level 1).

Cost: Senior: \$15 In district: \$42 Out of district: \$47

SYN: 7406 SENR-7042-101CL 09/05/14-10/10/14

F 10:00AM-12:00PM FAB 111 S Walker

PIANO II – 12 HRS

Students will be introduced to more advanced concepts, which will further their skills in reading music and playing the piano. The required texts are "Older Beginner Piano" (Level 2) by James Bastien and "Schaum Note Speller" (Level 2).

Cost: Senior: \$15 In district: \$42 Out of district: \$47

SYN: 7407 SENR-7005-101CL 10/17/14-11/21/14

F 10:00AM-12:00PM FAB 111 S Walker

SEWING: BASIC AND BEYOND QUILTING, BEGINNER – 36 HRS

This class is designed for beginners with little or no experience with sewing machines or quilting. Those who need help with a sewing project or who want to start a new one can join this class to learn how. Participants will work on projects for their home or wardrobe. A supply list will be provided the first class day; quilting students may bring their own projects or supplies.

Cost: Senior: \$15 In district: \$42 Out of district: \$47

SYN: 7591 SENR-7041-101CL 09/02/14-11/18/14

T 09:00AM-12:00PM LMCR 112 C Walker

SEWING: BASIC AND BEYOND QUILTING, ADVANCED – 36 HRS

Those who need help with a current sewing or quilting project or who want to begin a new project for their home or wardrobe are welcome in this class. A supply list will be provided the first class day; quilting students should bring their own supplies. Prerequisite: Three semesters of Basic and Beyond Quilting, Beginner is suggested.

Cost: Senior: \$15 In district: \$42 Out of district: \$47

SYN: 7408 SENR-7028-101CL 09/02/14-11/18/14

T 01:00PM-04:00PM LMCR 112 C Walker

SPANISH – 24 HRS

Students will gain a working knowledge of beginning Spanish, learn common nouns and phrases, then proceed to verbs and sentence construction. The last class will be a conversational class revolving around food.

Cost: Senior: \$15 In district: \$42 Out of district: \$47

SYN: 7409 SENR-7015-101CL 09/06/14-11/22/14

S 10:00AM-12:00PM TVB 1559 M Romero

SENIOR LECTURE SERIES

LECTURE: GENEALOGY OVERVIEW AND LIBRARY RESEARCH OPPORTUNITIES

Students will learn about upcoming trips to various libraries, the basic methods and systems for studying genealogy and the thrill of finding ancestors they never knew they had. During upcoming library trips students may discover birth, marriage or death records, probate records and perhaps wills. Students will learn how to dig a little deeper and develop persistence and research techniques along the way. Debbie Cothorn teaches this class.

Cost: Senior: FREE

SYN: 7410 SENR-7098-101CL 09/03/14-09/03/14

W 01:00PM-03:00PM LMCR 106

LECTURE: PORTION DISTORTION IN A SUPER-SIZED WORLD

Average portion sizes have grown so much during the past 20 years that sometimes the plate arrives and there's enough food for two or even three people on it. Growing portion sizes are changing what Americans view as normal portions at home too. Learn about the effects of portion distortion on our health and medical care costs and about nutrient-dense foods and a simple plan to improve any diet.

Cost: Senior: FREE

SYN: 7411 SENR-7098-102CL 09/10/14-09/10/14

W 02:00PM-03:00PM LMCR 106

LECTURE: AARP DRIVER SAFETY COURSE

The AARP sponsors this one-day safety course, and most major insurance companies offer discounted rates for those who complete it. The class shows seniors safer driving techniques to compensate for age-related problems. Participants will receive a completion certificate and should check with their insurance agents to discover whether completing this course will qualify them for an insurance discount. The certificate fee is \$12 for participants with a valid AARP membership card and \$14 for nonmembers. The instructor at the beginning of class will collect this fee. Note: This is a not a ticket dismissal class. Barbara Cook teaches this class.

Cost: Senior: FREE

SYN: 7412 SENR-7098-103CL 09/24/14-09/24/14

W 12:00PM-04:00PM LMCR 107

SYN: 7420 SENR-7098-112CL 12/11/14-12/11/14

TH 09:00AM-01:00PM LMCR 107

LECTURE: THE KEY TO MANAGING DIABETES

This workshop will explain diabetes mellitus, its prevalence and the lifestyle factors that contribute to diabetes. It will explore facts and myths and focus on the key principles for managing diabetes. Staff from Texas Home Health, an AccentCare Company, teach this class.

Cost: Senior: FREE

SYN: 7413 SENR-7098-104CL 09/30/14-09/30/14

T 02:00PM-03:00PM LMCR 106

LECTURE: ARTISTRY IN THE WILD

Doug Hiser, award winning wildlife artist and best-selling Amazon.com author, will highlight his artistic process for drawing and painting pieces that feature animals from across the globe. Hiser will also touch on incorporating nature, and all of its beauty, into visual art and creative writing.

Cost: Senior: FREE

SYN: 7793 SENR-7098-105CL 10/01/14-10/01/14

W 01:00PM-03:00PM LMCR

LECTURE: GENEALOGY: IMMIGRATION AND NATURALIZATION

Students will learn how to research the immigration and naturalization records of Galveston County from the 1800's through the 1950's. It will demonstrate how to search the Internet and show a few examples of records. Doryn Glenn, director of governmental affairs in Galveston County, teaches this workshop.

Cost: Senior: FREE

SYN: 7415 SENR-7098-107CL 10/22/14-10/22/14

W 01:00PM-03:00PM LMCR 106

LECTURE: ALZHEIMER CAREGIVER'S WORKSHOP

Participants will learn how to recognize the symptoms of Alzheimer's disease or other dementias and discover the techniques that work best to manage different types of behaviors. The class discusses how to encourage a loved one to engage in an activity and provides activities to stimulate a loved one's five senses when in the late stages of Alzheimer's disease or dementia. Juliana Burr, client care coordinator for Home Instead Senior Care, facilitates this workshop.

Cost: Senior: FREE

SYN: 7416 SENR-7098-108CL 10/29/14-10/29/14

W 02:00PM-04:00PM LMCR 106

LECTURE: VETERANS' BENEFITS

Veterans and their spouses may be entitled to a tax-free benefit called VA Aid and Attendance. The benefit was designed to provide financial assistance to offset the cost of long-term or in-home care. This class will fully explain the program, how to qualify and how to work through the paperwork maze. Bob Groux and Paul Shaffer from Veterans' Advocates present this lecture.

Cost: Senior: FREE

SYN: 7417 SENR-7098-109CL 11/05/14-11/05/14

W 01:00PM-03:00PM LMCR 106

LECTURE: GENEALOGY: CLUSTER AND WHOLE FAMILY RESEARCH

Students will learn how to research cluster and whole-family records. By researching an ancestor's family members, a genealogist can often open doors to further family research. Using death certificates and obituaries of extended family members, you may be able to find information you are searching for regarding your own ancestry. Students will also learn how to obtain obituaries from small-town newspapers. Melodey M. Hauch teaches this class.

Cost: Senior: FREE

SYN: 7418 SENR-7098-110CL 11/12/14-11/12/14
W 01:00PM-03:00PM LMCR 106

LECTURE: HOLIDAY HOME SAFETY AND SAFE SHOPPING

This lecture will provide information to seniors that will empower them to take control of their safety and wellbeing at home and while out shopping for the holidays. Because crime levels rise during the holiday season, the goal of this class is to introduce strategies for home and personal crime prevention. Lt. Sylvia Chapa, of the COM Police Department, teaches this class.

Cost: Senior: FREE

SYN: 7419 SENR-7098-111CL 11/19/14-11/19/14
W 01:00PM-03:00PM LMCR 106

SENIOR TRIPS

TRIP: PASADENA LITTLE THEATRE'S "ARSENIC AND OLD LACE"

A Dutch treat supper will be followed by the Pasadena Little Theatre production of "Arsenic and Old Lace." This award-winning play, written in 1939, is a farcical comedy centering on the Brewster family, descended from Mayflower settlers but now comprised of insane people and murderers. Two spinster aunts have taken to murdering lonely old men, a brother believes he is Theodore Roosevelt, and a murderous brother has received plastic surgery to conceal his identity. Cost includes transportation and admission ticket. This trip is open to seniors 55 or older. **Refund deadline: Aug. 25**

Cost: Senior: \$28

SYN: 7421 SENR-7099-101CL 09/11/14-09/11/14
TH 05:00PM-11:00PM

TRIP: GENEALOGY – CLAYTON LIBRARY

Students will travel to the Clayton Library for Genealogical Research, one of the top genealogical research libraries in the United States. Instructor Debbie Cothorn will assist beginner and advanced students in tracing their family history using research techniques and library resources. This library houses over 70,000 reels of microfilm and other electronic databases. This session will include a tour of the second floor, which houses a family histories collection, including published and nonpublished documents. Lunch is Dutch treat at Bodgas Mexican Restaurant, or participants may bring a sack lunch and eat at the library. The cost covers transportation and instruction. This trip is open to seniors 55 or older. **Refund deadline: Sept. 2**

Cost: Senior: \$22

SYN: 7422 SENR-7099-102CL 09/16/14-09/16/14
T 09:00AM-05:00PM D Cothorn

COM senior adult students endow senior scholarship



PHOTO: From left, Mike Cothorn, Alva Cothorn, Marge Dale, Grover Salsbury, COM Foundation executive director Mary Ann Amelang and Jessie Daly.

Eager to help other seniors pursue an education, the College of the Mainland Senior Adult Program Advisory Committee has raised funds to endow a scholarship exclusively for degree or certificate-seeking adults over 55.

The Ada Faye Salsbury Senior Adult Scholarship was begun by the Senior Adult Advisory Council, on which

Ada Salsbury served. After she passed away, the scholarship was named in her honor. Her husband, Grover Salsbury, with Marge Dale and others on the recently formed Senior Adult Program Advisory Committee worked to raise funds to endow this scholarship in her memory.

Grover Salsbury died July 8, 2014, after seeing his goal reached. The scholarship now will be given each year in memory of both Grover and Ada Faye as the Grover and Ada Faye Salsbury Senior Adult Endowed Scholarship.

The scholarship and others distributed by the COM Foundation are open for application each year. To apply, visit www.com.edu/scholarships or call 409-933-8508.

TRIP: PASADENA HOMETOWN OPRY – 50'S SHOW

A Dutch treat supper will be followed by the Pasadena Hometown Opry's show. Take a walk down memory lane and enjoy the theme for this evening's performance – music from the 1950's. The cost includes transportation and admission. This trip is open to seniors 55 or older.

Refund deadline: Sept. 11

Cost: Senior: \$28

SYN: 7423 SENR-7099-103CL 09/26/14-09/26/14

F 05:00PM-11:00PM

TRIP: GENEALOGY – MONTGOMERY COUNTY LIBRARY, CONROE

Participants will travel to the Montgomery County Library in Conroe, Texas. Instructor Debbie Cothorn will assist beginner and advanced students in tracing their family history using research techniques and library resources. This library houses many resources including special collections, the Dawes Rolls (Native American), south Louisiana records by Hebert and 19th-century military records. The cost covers transportation and instruction. Lunch is Dutch treat at Cracker Barrel, or participants may bring a sack lunch and eat at the library. This trip is open to seniors 55 or older. **Refund deadline: Sept. 23**

Cost: Senior: \$22

SYN: 7424 SENR-7099-104CL 10/07/14-10/07/14

T 09:00AM-05:00PM D Cothorn

TRIP: BIRDWATCHING – ANAHUAC NATIONAL WILDLIFE REFUGE AND BOLIVAR FLATS

Richard Mayfield hosts this trip to the Anahuac National Wildlife Refuge and the Bolivar Flats. At Bolivar Flats participants will walk the beach searching for shorebirds, and at the Anahuac National Wildlife Refuge they will drive around the ponds looking for ducks, herons and rails. Please bring a sack lunch to picnic, snacks and plenty of water for the day. Binoculars are needed for this trip, and a camera is suggested. This trip is open to seniors 55 or older. **Refund deadline: Sept. 23**

Cost: Senior: \$28

SYN: 7425 SENR-7099-105CL 10/07/14-10/07/14

T 08:15AM-04:00PM R Mayfield

TRIP: SPINDLETOP BOOMTOWN MUSEUM AND MCFADDIN-WARD HOUSE, BEAUMONT

This trip to Beaumont features two attractions: the McFadden-Ward House Historic House Museum and the Spindletop – Gladys City Boomtown Museum. Built in 1900, the McFadden-Ward House features distinctive Beaux-Arts colonial style architecture and reflects the lifestyle of the prominent family who lived there for 75 years. The Spindletop-Gladys City Boomtown Museum will take the student back in time to when the great gusher of 1901 changed Texas' economy and helped usher in the oil age. Participants will enjoy a Dutch treat lunch between attractions. Cost includes transportation and admission tickets. This trip is open to seniors 55 or older. **Refund deadline: Sept. 30**

Cost: Senior: \$28

SYN: 7426 SENR-7099-106CL 10/15/14-10/15/14

W 08:00AM-04:30PM

TRIP: NIZZA MOSAIC STUDIO AND GALLERY AND A STATEMENT IN GLASS

Students will travel to the Nizza Mosaic Studio and Gallery in the Heights area of Houston, a working gallery where students will watch artworks in progress and view a gallery of completed works. Glass and tools are available for purchase. Following a Dutch treat lunch, students will travel to A Statement in Glass: Stained Glass Supplies in La Porte, where they may purchase supplies for many types of glass artworks. This trip is open to seniors 55 or older. **Refund deadline: Oct. 13**

Cost: Senior: \$15

SYN: 7509 SENR-7099-114CL 10/24/14-10/24/14

F 09:00AM-03:00PM

TRIP: ESCAPE DOWN 288 – LAKE JACKSON TOURS

"Escape Down 288" features three attractions. Students will visit the Sea Center Texas, which hosts the largest redfish hatchery in the world and showcases saltwater aquariums. The Lake Jackson Historical Museum promises that students will "explore the unique history of the city, visit the ghost of Maj. Jackson, fly the Windecker Eagle and learn why our streets are named This Way and That Way." The final stop will be the Center for the Arts and Sciences, which was named one of Frommer's Top Ten Museums in Texas and features over 14,000 shells, dinosaur fossils and a mineralogy collection. Lunch will be Dutch treat between the second and third attractions. The cost includes transportation and admission to all attractions. This trip is open to seniors 55 or older. **Refund deadline: Oct. 13**

Cost: Senior: \$22

SYN: 7427 SENR-7099-107CL 10/29/14-10/29/14

W 08:00AM-04:00PM

TRIP: GENEALOGY – GEORGE MEMORIAL LIBRARY, RICHMOND

Students will travel to the George Memorial Library in Richmond, Texas. Instructor Debbie Cothorn will assist beginner and advanced students in tracing their family history using research techniques and library resources. This library houses resources that focus on the southeastern United States, including pension records, federal censuses and documents relating to Texans in the Mexican and Civil War. Collections include books and microfilm. The cost covers transportation and instruction. Lunch is Dutch treat, or participants may bring a sack lunch and eat at the library. This trip is open to seniors 55 or older. **Refund deadline: Oct. 21**

Cost: Senior: \$22

SYN: 7428 SENR-7099-108CL 11/04/14-11/04/14

T 08:30AM-05:00PM D Cothorn

TRIP: VARNER-HOGG PLANTATION HISTORICAL SITE

This trip to West Columbia features the Varner-Hogg Plantation, a state historic site. Students will explore the antebellum mansion, built by slaves in 1824 using brick made from Brazos River mud. This property hosted sugar cane production, rum distilling and oil drilling. Students will stroll the magnificent grounds featuring pecan orchards, magnolia trees and stories of 19th-century Texas. The cost includes transportation and admission. This trip is open to seniors 55 or older. **Refund deadline: Oct. 27**

Cost: Senior: \$22

SYN: 7429 SENR-7099-109CL 11/11/14-11/11/14

T 08:30AM-03:30PM

TRIP: BIRDWATCHING – BRAZOS BEND STATE PARK

Richard Mayfield hosts this trip to Brazos Bend State Park, where students will park and walk around the 40-acre pond in search of ducks, herons, rails and wintering song birds. The walk around the pond is about two miles. Please wear closed-toed shoes for this trip and bring bottled water for the walk. Binoculars and a camera are suggested. Lunch will be Dutch treat at a local restaurant. This trip is open to seniors 55 or older. **Refund deadline: Nov. 4**

Cost: Senior: \$28

SYN: 7430 SENR-7099-110CL 11/18/14-11/18/14

T 08:15AM-04:00PM R Mayfield

TRIP: TUTS – “DIRTY DANCING, THE MUSICAL”

A Dutch treat supper will be followed by our first trip to the Theatre Under The Stars to see the cast of Broadway Across America’s production of “Dirty Dancing, the Musical.” This classic musical story of stage tells the story of 17-year-old Frances “Baby” Houseman’s summer of 1963, where she learns some major lessons in life as well as a thing or two about dancing when she stumbles across staff quarters during an all-night dance party. Mesmerized by the dancing and heart-pounding music, she catches the eye of Johnny Castel, the resort’s head dance instructor. Baby becomes Johnny’s leading lady on and off the stage with breathtaking performances to the classic songs “Hungry Eyes,” “Hey, Baby,” “Do You Love Me?” and “I’ve Had the Time of My Life.” The cost includes transportation and admission. This trip is open to seniors 55 or older. **Refund deadline: Nov. 7**

Cost: Senior: \$50

SYN: 7431 SENR-7099-111CL 11/19/14-11/19/14

W 04:00PM-11:00PM

A Word about Waiting to Register...

Each class has a minimum enrollment. Once that minimum is reached, the class has “made.” Find a class you like, and encourage a friend to join you! Sometimes two or three people can make a difference between having a course “make” or be canceled.

TRIP: GENEALOGY – CLAYTON LIBRARY

Students will travel to Clayton Library for Genealogical Research, one of the top genealogical research libraries in the United States. Instructor Debbie Cothorn will assist beginner and advanced students in tracing their family history using research techniques and library resources. This library houses over 70,000 reels of microfilm and other electronic databases. This session will include a tour of the second floor, which houses a family histories collection, including published and nonpublished documents. The cost covers transportation and instruction. Lunch is Dutch treat at Bodgas Mexican Restaurant, or participants may bring a sack lunch and eat at the library. This trip is open to seniors 55 or older. **Refund deadline: Nov. 18**

Cost: Senior: \$22

SYN: 7432 SENR-7099-112CL 12/02/14-12/02/14

T 09:00AM-05:00PM D Cothorn

TRIP: ALLEY THEATRE’S “A CHRISTMAS CAROL”

Back by popular demand, this trip begins with a Dutch treat supper, followed by the Alley Theatre’s classic production of “A Christmas Carol – A Ghost Story of Christmas.” The production is described by the Houston Post as “spiced with the usual fog and an unusual twist of the ghosts of Christmas past, present and future.” The Dickens’ classic is filled with holiday spirit and redemption. This trip is open to seniors 55 or older. The cost includes transportation and a ticket. This trip is open to seniors 55 or older. **Refund deadline: Dec. 1**

Cost: Senior: \$40

SYN: 7433 SENR-7099-113CL 12/16/14-12/16/14

T 04:00PM-11:00PM

COM GRAD MAKES OPRY TOUR



Shawn Johnson
COM Music Student

Read Shawn Johnson’s story at www.com.edu/success.

SPACE AVAILABLE CLASSES

Space available classes are academic/credit classes in which continuing education students may enroll for personal enrichment. These classes are available to a limited number of noncredit students who are expected to complete all course objectives, take exams and meet attendance requirements. Students will receive a grade of either pass or fail; however, no college credit hours are earned. Noncredit students are not required to take college placement tests or make application to the College to take these classes. Space available classes follow the Fall credit class semester: Aug. 25 to Dec. 13. Full course descriptions are available in the College catalog, and more information about these courses can be viewed in the credit schedule. Both of these documents are located online at www.com.edu/schedule.

The following space available classes cost \$270 for in-district students and \$275 for out-of-district students. There will be an additional \$25 computer fee for hybrid courses and a \$35 fee for online courses. Internet and hybrid classes require completion of the Online Learner Workshop (OLW) prior to first class date. (See page 5 for more details.)



ACTING I – 48 HRS

Cost: In district: \$270 Out of district: \$275
 SYN: 6504 ARTSL-2007-140CL 08/25/14-12/12/14
 TTH 11:00AM-12:20PM FAB 117 M Adams



PHOTOGRAPHY I – 96 HRS

Cost: In district: \$270 Out of district: \$275
 SYN: 6535 ARTSL-2002-121CL 08/25/14-12/12/14
 TTH 09:30AM-12:20PM TVB 1572 C Peet
 SYN: 6534 ARTSL-2002-120CL 08/25/14-12/12/14
 MW 02:00PM-04:50PM TVB 1572 C Peet



SCULPTURE I

Cost: In district: \$270 Out of district: \$275
 SYN: 7715 ARTSL-2026-120CL 08/25/14-12/12/14
 MW 12:30PM-03:20PM FAB 135 G Bowes



CERAMICS

Cost: In district: \$270 Out of district: \$275
 SYN: 7716 ARTSL-2047-120CL 08/25/14-12/12/14
 MW 06:00PM-08:50PM FAB 138 G Bowes



CLASS GUITAR – 48 HRS

Cost: In district: \$90 Out of district: \$95
 SYN: 6636 MUSIL-2002-160CL 08/25/14-12/12/14
 M 03:30PM-06:20PM FAB 117 J Kiefer



CLASS PIANO I – 48 HRS

Cost: In district: \$90 Out of district: \$95
 SYN: 6620 MUSIL-2001-160CL 08/25/14-12/12/14
 TTH 04:30PM-05:50PM FAB 111 S Termini



CLASS PIANO II – 48 HRS

Cost: In district: \$90 Out of district: \$95
 SYN: 6635 MUSIL-2001-161CL 08/25/14-12/12/14
 MW 04:30PM-05:50PM FAB 111 S Termini



CONCERT BAND – 48 HRS

Cost: In district: \$90 Out of district: \$95
 SYN: 6621 MUSIL-2003-270CL 08/25/14-12/12/14
 M 07:30PM-10:20PM FAB 117 H Koerner



GUITAR ENSEMBLE – 48 HRS

Cost: In district: \$90 Out of district: \$95
 SYN: 6632 MUSIL-2002-170CL 08/25/14-12/12/14
 W 03:30PM-06:20PM FAB 117 J Kiefer



JAZZ COMBO – 48 HRS

Cost: In district: \$90 Out of district: \$95
 SYN: 6631 MUSIL-2004-170CL 08/25/14-12/12/14
 TTH 03:00PM-04:20PM FAB 117 H Koerner



JAZZ ENSEMBLE – 48 HRS

Cost: In district: \$90 Out of district: \$95
 SYN: 6629 MUSIL-2005-270CL 08/25/14-12/12/14
 T 07:30PM-10:20PM FAB 117 H Koerner



MAINLAND CHORALE – 48 HRS

Cost: In district: \$90 Out of district: \$95
 SYN: 6633 MUSIL-2007-270CL 08/25/14-12/12/14
 T 07:30PM-10:20PM FAB 110 J Heffel



MAINLAND SINGERS – 48 HRS

Cost: In district: \$90 Out of district: \$95
 SYN: 6634 MUSIL-2006-270CL 08/25/14-12/12/14
 M 07:30PM-10:20PM FAB 110 J Heffel



WOODWIND ENSEMBLE: CLARINET, SAXOPHONE – 48 HRS

Cost: In district: \$90 Out of district: \$95
 SYN: 6630 MUSIL-2008-270CL 08/25/14-12/12/14
 TH 07:00PM-09:50PM FAB 117 T Kochen



COMPUTER ILLUSTRATION – 96 HRS

Cost: In district: \$270 Out of district: \$275
 SYN: 6849 ARTC-1053-128HY 10/20/14-12/12/14
 MW 11:00AM-01:50PM TVB 1572 C Jackson

COLLEGE MISSION

College of the Mainland is a learning-centered, comprehensive community college dedicated to student success and the intellectual and economic prosperity of the diverse communities we serve.

COLLEGE VISION

College of the Mainland will be a valued and vital community partner by striving to enrich our expanding community and preparing our students to learn, work and live in a diverse, dynamic and global environment.

COLLEGE OF THE MAINLAND BOARD OF TRUSTEES

Ralph Holm, Rosalie Kettler, Bennie Matthews, Roney G. McCrary, Wayne H. Miles, Rachel Delgado and N. E. "Nick" Stepchinski

ACCREDITATION

College of the Mainland is accredited by:

The Commission on Colleges of the Southern Association of Colleges and Schools to award associate degrees and certificates. Contact the Commission on Colleges at 1866 Southern Ln., Decatur, GA 30033-4097 or call 404-679-4500 for questions about the accreditation of College of the Mainland. The Commission is to be contacted only if there is evidence that appears to support the institution's significant non-compliance with a requirement or standard.

DISCLAIMER STATEMENT

College of the Mainland reserves the right to withdraw a student due to any inability to maintain the prescribed rate of progress or for behavior detrimental to the learning process of the student or class. College of the Mainland also reserves the right to make changes in regulations, courses, fees and other matters of policy and procedure when deemed necessary. These provisions are not to be regarded as an irrevocable contract between the student and the college.

Continuing Education Office

Located in the Technical-Vocational Building, Room T-1475

Business Hours:

Monday through Friday, 8 a.m. – 5 p.m.

Phone: 409-933-8586

Fax: 409-933-8026

www.com.edu/ce

Visit us online at www.com.edu/ce.

Save This Schedule!

CE offers hundreds of classes.

One is just right for you!

NOTICE OF NONDISCRIMINATION

College of the Mainland does not discriminate in its education programs and activities on the basis of sex. Inquiries concerning application of Title IX of the Education Amendments of 1972, as amended, may be referred to the College's Title IX Coordinator or the U.S. Department of Education's Office of Civil Rights. The College District designates the following person to coordinate its efforts to comply with Title IX of Education Amendments: Lonica Bush, lbush@com.edu, 1200 Amburn Road, Texas City, TX 77591, 409-933-8413.

PUBLIC INFORMATION STATEMENT

College of the Mainland offers credit academic and vocational programs published in the current college catalog. Admission into these programs is based on graduation from an accredited high school, a GED certificate or individual approval. It is the policy of College of the Mainland not to discriminate on the basis of sex, handicap, race, color, age or national origin in its education and vocational programs, activities or employment as required by Title IX, section 504 and Title VI. College of the Mainland will take steps to assure that lack of English language skills will not be a barrier to admission and participation in all educational and vocational programs. For more information about your rights or grievance procedures, contact the Vice President for Instruction, 1200 Amburn Road, Texas City, TX 77591-2499, or call 409-933-8229, (local) or 1-888-258-8859, ext. 8229. College of the Mainland is an equal opportunity/affirmative action educational institution and does not discriminate on the basis of race, sex, age, religion, veteran status or national origin.

DECLARACIÓN E INFORMACIÓN PÚBLICA

El College of the Mainland ofrece programas vocacionales y académicos publicados en el presente catalogo. La admisión a estos programas se efectúa a base de la graduación de una escuela secundaria acreditada o por medio de un certificado de GED o aprobación individual. Es la política del College of the Mainland no discriminar a base de sexo, desventaja física, raza, color, edad u origen nacional en sus programas educativos y vocacionales, ni en las actividades y el empleo, de acuerdo con los requisitos del Título IX, Sección 504, y del Título VI. El College of the Mainland tomara' medidas para asegurar que el desconocimiento del idioma ingles no sea obstaculo a la admisión y participación en todos los programas educativos y vocacionales.

CE Registration Date

Registration begins Aug. 4, 2014,
for Fall 2014 Continuing Education
and
Senior Adult Program classes.

INDEX

A

3 R'S OF INFANT/TODDLER LITERACY30

ACTING I47

ADVANCED ACCIDENT INVESTIGATION32

ALLIED HEALTH CAREERS.....8

ALLIED HEALTH PROFESSIONAL DEVELOPMENT11

ART: BEADED FASHION JEWELRY39

ART: BRAZILIAN EMBROIDERY, BEGINNER TO ADVANCED39

ART: BRAZILIAN EMBROIDERY, INTERMEDIATE TO ADVANCED.....39

ART: DRAWING FROM PHOTOGRAPHS.....39

ART: FLORAL ARRANGING.....39

ART: FUSION GLASS JEWELRY, ADVANCED39

ART: FUSION GLASS JEWELRY, BEGINNER.....39

ART: MOSAIC39

ART: PAINTING GOURDS39

ART: PAINTING WITH ACRYLICS40

ART: PAINTING WITH OILS40

ART: PAINTING WITH WATERCOLORS40

ART: PAPER MACHE ANIMALS40

ART: PHOTOGRAPHY AS A HOBBY (EXPERIENCED)40

ART: PHOTOGRAPHY FOR THE INEXPERIENCED.....40

ART: STAINED GLASS ADVANCED, LEAD CAME METHOD40

ART: STAINED GLASS, ADVANCED40

ART: STAINED GLASS, BEGINNER.....40

ASSESSMENT – USE IT OR LOSE IT31

B

BEGINNER TRAIN THE TRAINER.....31

BODY SCULPTING36

BRIDGE TO CREDIT BUSINESS AND COMPUTER TECHNOLOGY CERTIFICATE.....12

BRIDGE TO CREDIT: ADMINISTRATIVE SUPPORT CERTIFICATE12

BRIDGE TO CREDIT: COMPUTER-AIDED DRAFTING CERTIFICATE14

BRIDGE TO CREDIT: ENTREPRENEURSHIP CERTIFICATE13

BRIDGE TO CREDIT: ENTRY-LEVEL SHIELDED METAL ARC PIPE WELDING CERTIFICATE ...15

BRIDGE TO CREDIT: ENTRY-LEVEL GAS SHIELDED PIPE WELDING CERTIFICATE.....15

BRIDGE TO CREDIT: ENTRY-LEVEL WELDING CERTIFICATE15

BRIDGE TO CREDIT: GRAPHIC DESIGN CERTIFICATE14

BRIDGE TO CREDIT: MANAGEMENT CERTIFICATE13

BRIDGE TO CREDIT: MARKETING CERTIFICATE13

BRIDGE TO CREDIT: PROFESSIONAL BOOKKEEPER CERTIFICATE12

BRIDGE TO CREDIT: SQL SERVER DATABASE FUNDAMENTALS CERTIFICATE14

BRIDGE TO CREDIT: SQL SERVER IMPLEMENTATION AND MAINTENANCE CERTIFICATE14

BUSINESS AND COMPUTER TECHNOLOGIES...16

C

CENTER FOR RISK MANAGEMENT32

CERAMICS47

CERTIFIED NURSE AIDE CERTIFICATE8

CHILD ABUSE AND NEGLECT31

CHILD DEVELOPMENT30

CLASS GUITAR.....47

CLASS PIANO I.....47

CLASS PIANO II47

COMMISSIONED SECURITY OFFICER.....27

COMPUTER ILLUSTRATION47

COMPUTER: ABSOLUTE BEGINNERS.....40

COMPUTER: APPLICATIONS FOR BEGINNERS41

COMPUTER: DIGITAL STORYBOOKING.....41

COMPUTER: IPAD/IPHONE BEGINNER41

CONCERT BAND47

CONTINUING EDUCATION FOR LAW ENFORCEMENT..... 28, 29

CRISIS INTERVENTION TRAINING28

CULTURAL DIVERSITY30

D-F

DENTAL ASSISTANT CERTIFICATE9

ELECTROCARDIOGRAPHY AND TELEMETRY MONITORING TECHNICIAN9

ELECTROCARDIOGRAPHY TECHNICIAN CERTIFICATE9

EMT – BASIC RECERTIFICATION26

ENVIRONMENTAL WASTE MANAGEMENT32

EXERCISE: DANCE FOR HEALTH41

EXERCISE: DYNA-BANDS41

EXERCISE: LINE DANCING41

EXERCISE: PILATES41

EXERCISE: RHYTHMIC STRENGTHENING AND STRETCHING41

EXERCISE: SIT-N-FIT (INTERMEDIATE)41

EXERCISE: TOTAL BODY FITNESS.....42

EXERCISE: WEIGHT TRAINING.....42

EXERCISE: YOGA42

E

FAST-TRACK REAL ESTATE PROGRAM20

FIRE OFFICER III26

FIRE OFFICER IV26

FITNESS AND RECREATION35

FITNESS CLASSES36

FITNESS MEMBERSHIPS35

G

GETTING FAMILIES INVOLVED30

GUITAR ENSEMBLE.....47

GULF COAST SAFETY INSTITUTE.....32

INDEX

HAZARDOUS MATERIALS TECHNICIAN	26	OCCUPATIONAL EXPOSURE TO CRYSTALLINE SILICA.....	32	TCFP CONTINUING EDUCATION.....	26
HEALTHCARE PROVIDER CPR	11	PATIENT CARE SEMINAR 11		TCOLE INSTRUCTOR.....	29
HEATING, VENTILATION AND AIR-CONDITIONING CERTIFICATE	22	PATIENT CARE TECHNICIAN CERTIFICATE	11	TEXAS TWO-STEP	36
HIGH-RELIABILITY SAFETY PROGRAM DEVELOPMENT	32	PERSONAL ENRICHMENT.....	34	THE EIGHT ATTRIBUTES OF CHARACTER DEFINED IN GREAT LEADERS.....	32
HUMAN TRAFFICKING.....	28	PHLEBOTOMY TECHNICIAN CERTIFICATE	10	VOLLEYBALL LEAGUES	36
HYDROGEN SULFIDE SAFETY.....	32	PHOTOGRAPHY I.....	47	WELDING, MULTIPLE PROCESSES.....	25
ICC, ARREST, SEARCH AND SEIZURE.....	28	PHYSICAL THERAPY AIDE CERTIFICATE.....	10	WOODWIND ENSEMBLE: CLARINET, SAXOPHONE	47
ICS300 – INTERMEDIATE INCIDENT COMMAND SYSTEM FOR EXPANDING INCIDENTS.....	33	PIANO I.....	42	WORKPLACE SAFETY FOR SMALL BUSINESS OWNERS, MANAGERS AND SUPERVISORS	33
ICS400 – ADVANCED INCIDENT COMMAND SYSTEM, COMMAND AND GENERAL STAFF	33	PIANO II	42	ZUMBA	36
INDUSTRIAL TRADE CAREERS.....	22	POLICE FIREARMS INSTRUCTOR.....	29		
INTERMEDIATE SPANISH	28	PREVENT, TEACH AND REINFORCE.....	30		
IT COSTS TO BE THE BOSS!.....	31	PROFESSIONAL DEVELOPMENT FOR CERTIFIED NURSE ASSISTANTS	11		
JAZZ COMBO.....	47	PROFESSIONAL DEVELOPMENT	30		
JAZZ ENSEMBLE.....	47	PROFESSIONALISM IN THE WORKPLACE	31		
LEGAL UPDATE.....	29	SCULPTURE I	47		
LIFE STORY WRITING.....	42	SECURITY AND LOSS PREVENTION	27		
MACHINIST CERTIFICATE	25	SECURITY CLASSROOM INSTRUCTOR.....	27		
MAINLAND CHORALE	47	SECURITY FIREARMS INSTRUCTOR	28		
MAINLAND SINGERS	47	SECURITY FIREARMS REQUALIFICATION/CE ...	27		
MECHANICAL MAINTENANCE TECHNICIAN, ADVANCED CERTIFICATE	24	SECURITY NEW SUPERVISOR.....	28		
MECHANICAL MAINTENANCE TECHNICIAN, BASIC CERTIFICATE.....	23	SECURITY NEW SUPERVISORS.....	28		
MECHANICAL MAINTENANCE TECHNICIAN, INTERMEDIATE CERTIFICATE	24	SENIOR ADULT PROGRAM	37		
MEDICAL BILLING AND CODING SPECIALIST CERTIFICATE	9	SENIOR LECTURE SERIES.....	43, 44		
MEDICAL SURVEILLANCE PROGRAMS	32	SENIOR TRIPS	44, 45, 46		
MEDICAL TERMINOLOGY I.....	16	SEWING: BASIC AND BEYOND QUILTING, ADVANCED	42		
MEDICATION AIDE CERTIFICATE.....	10	SEWING: BASIC AND BEYOND QUILTING, BEGINNER	42		
MEDICATION AIDE UPDATE	11	SMALL BUSINESS SAFETY AND HEALTH CENTER	33		
		SPANISH.....	42		
		SPINNING	36		
		STUDIO ART	34		

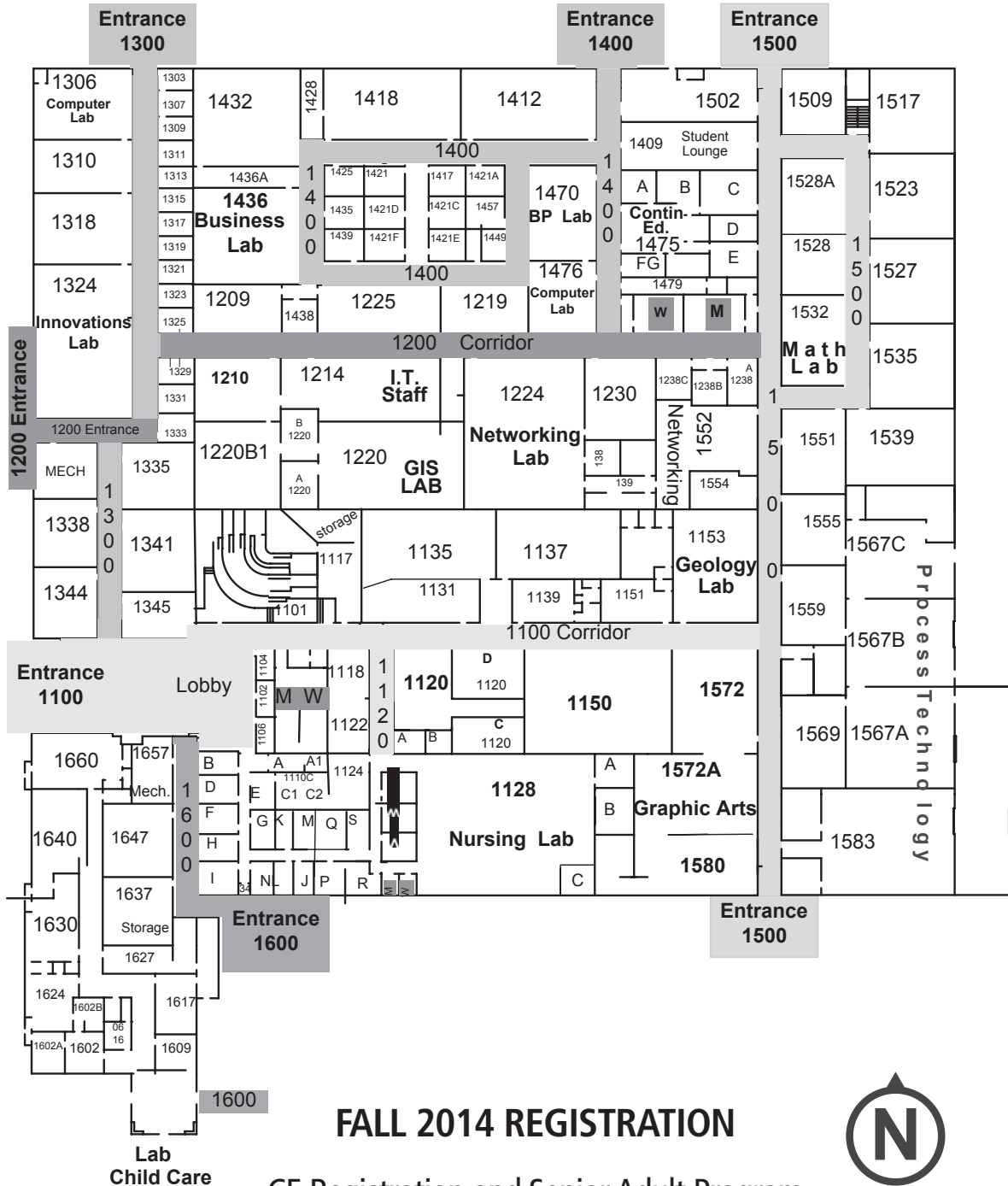
The Continuing Education office is located in the Technical-Vocational Building,
Room TVB-1475, on the main campus.

Phone: 409-933-8586 Fax: 409-933-8026

Mail: Continuing Education, 1200 Amburn Rd., Texas City, TX 77591

Email: ContEd@com.edu

TECHNICAL-VOCATIONAL BUILDING



FALL 2014 REGISTRATION

CE Registration and Senior Adult Program
Registration begins Aug. 4, 2014.



COM STUDENTS

ARTIST USES DNA, HAIR TO CREATE WORKS

Artist Kamila Szczesna is a reverse detective. Rather than decipher clues, she leaves them for her viewers.

"Art is a verb. It happens when the viewer looks at it. I try to leave clues, but the viewer brings the story from their own view," she said.

The former student in College of the Mainland continuing education art classes has had her work—sculpture, drawings and mixed media pieces—featured in galleries around the world, and Szczesna was recently accepted as an artist in residence at the Centre of Polish Sculpture in Oronsko. Her art is also currently part of the "REady MADE" exhibit on display at the Lawndale Art Center in Houston and at the 2013 Texas National Art Competition and Exhibition in Nacogdoches.

Szczesna fashioned her sculpture "Embalmed" displayed in Nacogdoches from clothing, chopsticks and even a music box gilded in gold leaf. For the Lawndale exhibit, Szczesna dipped repurposed objects such as clothing, string and balloons into slip (liquid clay). The resulting piece, "Process," which hangs from the ceiling, will gradually change as the balloons deflate.

"Time is a very important part of my work. You see how [art]'s very ephemeral," she said.

Though skilled in fashioning many materials into art, Szczesna always begins a piece with the simplest media—pen and paper.

"Drawing is like the skeleton, the way to capture the thought," she said.

After sketching, she determines which artistic medium will best express her idea. Using everything from sterling silver leaf to porcelain to human hair, she deftly translates the ideas on paper into a 2-D or 3-D form.

"You need to understand how the material will behave. As long as you understand that, everything is possible," the artist said.

A native of Poland, Szczesna moved to Galveston when her husband, a molecular biologist, accepted a position at the University of Texas Medical Branch. Moving from the land of five-month winters to the sunny Gulf Coast, she brought her work with her, but discovered she needed other artists' perspectives.

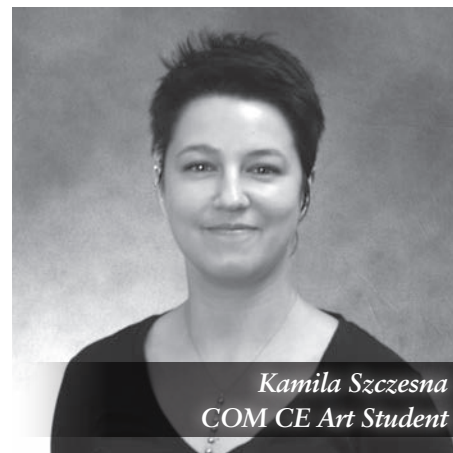
"It's very difficult to work in solitude," she said. "I was really craving art dialogue."

On a friend's recommendation, Szczesna, who earned a master's degree in art in Poland, enrolled in Mark Greenwalt's drawing course as a continuing education class. The course allowed her to learn from other artists' critiques as well as share her knowledge in a dynamic environment.

"She went to a really profound level in her art. She was very helpful with critiques," said Greenwalt.

Szczesna gained "deeper relationships with the art world through Mark's class. The setting was just perfect. He challenged me several times with my own work," Szczesna added. "The way he teaches and interacts with students, it's so obvious he loves what he's doing. He doesn't look at the clock. He loves art and spreads excitement around."

Though she's created art as long as she can remember, she gained new insights with the class. Each semester, it had different dynamics, filled with individual artists with different passions, pursuits and plans. She enrolled in the course multiple times over the course of three years.



Kamila Szczesna
COM CE Art Student

"I couldn't stop," she said.

At the time, an exhibit at the COM Art Gallery featured some of her drawings along with student Donna Perkins' work. Since then she's continued to stretch the boundaries of art. One of her recent pieces is "Mind Viewers," an exhibit that features her sculpture as well as videos documenting the sculpture-making process through a camera fixed to her head. Watching her hands fashion the work and analyze it from different angles, the viewer gets a presentation that is as close to mind reading as possible.

"You are able to look into my head to see what I saw," she said.

Though her exhibits offer a glimpse into her mind, she acknowledges that not all viewers' interpretations will mirror her own—and that's her intent.

"I'm very thrilled that I'm able to spark imagination of the viewer," she said.

Through her work, she portrays the same world that her biologist husband explores through mitochondria. Sometimes she delves into the scientific side of life, as in her work "Fleeting," exhibited at the Galveston Art Center in 2011. There she displayed images of cultures of bacteria harvested from her saliva.

In her newest project, she's again blending art, science and technology—this time through human hair. Working one strand at a time, she embroiders it into a piece designed to resemble a QR code, a barcode that smart phones can scan. She chose the QR code form because the codes hold a wealth of information about a product just as hair holds a wealth of information about an individual, a piece of their story.

"[My art's] all about what life really is," said Szczesna. "I don't have any illusions I will find right answers; it's just my attempts to ask questions. It's about being alone in the crowd, but each person has his/her part of the story."

In "Embalmed" artist Kamila Szczesna gilded repurposed clothing, chopsticks and even a music box in gold leaf.

The balloons dipped in clay will gradually deflate in artist Kamila Szczesna's "Process."

COM STUDENTS

FOR KEITH HARRINGTON, A FRESH START TOOK JUST 12 WEEKS



*Keith Harrington
COM Welding Student*

First coming to College of the Mainland to take two six-week welding courses, Harrington, a former plumber and construction worker, discovered at last a career he could enjoy for the rest of his life.

"I'm the first person in my family to go to college," said Harrington, 45, of San Leon. "I caught on pretty quick. I learned how to MIG and flux (weld) in seven days. After 12 weeks, I knew I could do this."

It proved a second chance for Harrington, who holds two nonviolent felony convictions.

Though he has not yet completed COM's four certificates, he has passed an industry welding test. He's thrilled to make \$1,000 a week working at Woven Metal Products in Alvin, welding various types of reactors used in industry.

COM welding professor Doc Miller has seen many such transformations in his NUMBER years teaching.

"Students come, learn a skill and go from a minimum-wage job to good-paying job," said Miller. "It changes people's lives."

A booming industry, welding provides a second chance for students of all backgrounds.

"This is the right time for anybody to get in the field," added Miller. "Some of the best welders in the world come to the Gulf Coast because there are so many jobs. More companies call us looking for qualified students than we have students."

Harrington, though now employed, has determined to earn all four certificates COM offers – Entry-Level Welding, Entry-Level Gas Shielded Pipe Welding, Entry-Level Shielded Metal Arc Pipe Welding – and expand his skills.

"I'm trying to get more consistent," he said. "The weld will tell on you every time. (A correct weld) looks like you just bent a piece of metal. If you don't do it correctly, it cracks or shows stress every time."

Harrington learned through textbooks, hands-on instruction and as many hours practicing in the lab as he wanted.

"I'm old. I struggled a little bit," said Harrington. "As long as you're paying attention, you can do it. You do bookwork, (instructors) show you, and then you keep doing it until they tell you (that) you did it right."

Many students, like Harrington, qualify for financial aid. COM is an approved vendor to provide vocational training for eligible participants under the federal Workforce Investment Act. Qualifying individuals can receive free tuition, fees and books.

Working with instructors Miller, Rico Brown and Victor Woods, Harrington has found his niche.

"They taught me so much. I'd have never been able to get a welding job if I hadn't come in here," said Harrington. "I've done a lot of jobs. ... (Welding)'s going to be my final one though."

For more on COM's Welding Program, visit www.com.edu/welding.

Don't miss COM Community Theatre's Summer Musical

based on the 1980 hit movie:

"9 to 5: The Musical"

Music and lyrics by Dolly Parton

through Aug. 10, 2014

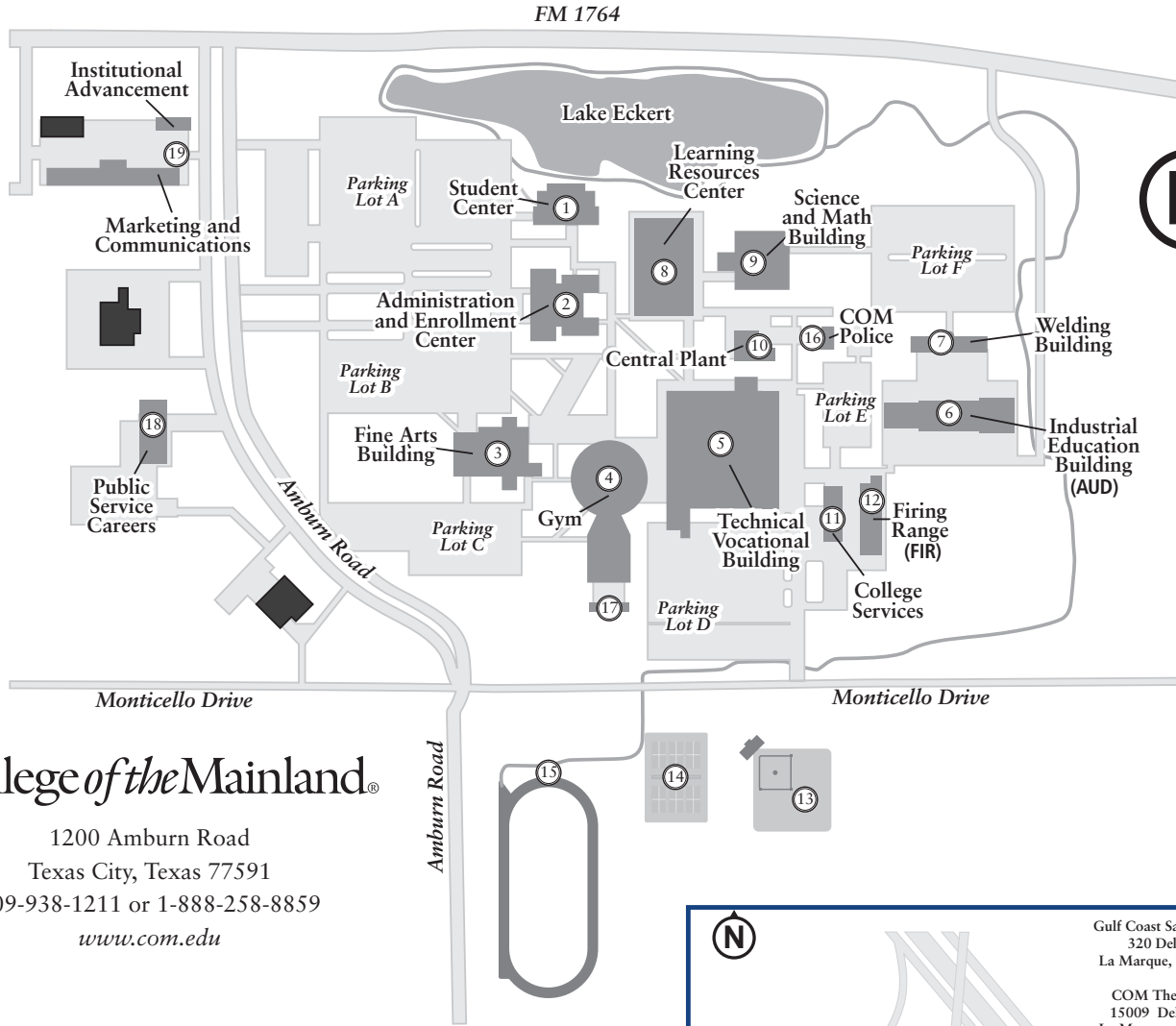
Featuring: Donna Bane, Curtis Barber, Amber Bennett, Melanie Bernsen-Clinkscales, Bobby Britton, Tom Carrington, Kyle Crawford, Katherine Cunningham, Cameron Dunbar, Max Estudillo, Matt Graves, Marion McDaniel, Caroline Menefee, Darin Montemayor and Eboni Williams

Thursdays – Saturdays at 8 p.m. and Sundays at 2:30 p.m.



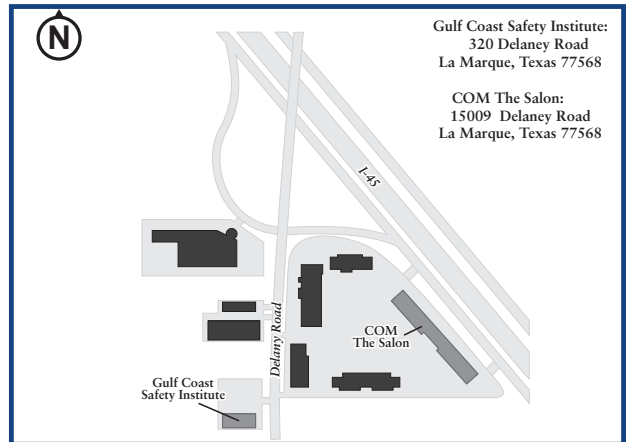
For reservations, call the box office at 888-258-8859, ext. 8345 or 409-933-8345 or purchase online at www.com.edu/theatre.

CAMPUS MAPS



COM SENIOR PROGRAM

Location: 1130 Delmar • Phone: 409.938.1211, ext. 432



CONTINUING EDUCATION REGISTRATION

SSN or Student ID	NAME (Last, First, Middle Initial)	CITY	STATE	ZIP
CHECK ONE: 1. Do you consider yourself to be Hispanic/Latino? <input type="checkbox"/> Yes <input type="checkbox"/> No 2. In addition, please select one or more of the following racial categories to describe yourself: <input type="checkbox"/> American Indian or Alaskan Native <input type="checkbox"/> Asian <input type="checkbox"/> Black or African American <input type="checkbox"/> Native Hawaiian or Pacific Islander <input type="checkbox"/> White	MAILING ADDRESS			
	Date of Birth	Sex <input type="checkbox"/> Male <input type="checkbox"/> Female	Home Phone	Business/Cell Phone
	EMAIL ADDRESS			
	This is to certify that I <input type="checkbox"/> AM <input type="checkbox"/> AM NOT a legal resident of the College of the Mainland District. To be a legal resident of College of the Mainland District, you must reside in one of the following school districts: Hitchcock, Santa Fe (including Algoa, Arcadia, Alta Loma), Texas City, La Marque and Dickinson.			
Signature _____		Date _____		

COURSES TO ADD

Term	Synonym	Course Abbreviation	Course #	Section #	Cost

What is your primary educational goal?

- Personal enrichment
- New/better/improved job
- One-year certificate
- Other _____

Reason for taking this course:

- Need for my current job
- For my/my family's health
- For future job skills
- Just for fun
- To explore new interests
- Other _____

How you learned about this class:

- Newspaper ad
- Radio ad
- TV ad
- Brochure or flier
- Friend recommended
- Found on the Web
- Previous classes here
- Other _____

Refund policy: **NO REFUNDS** will be made after a class begins. We will be happy to issue a full refund if cancellation is received before the class start date. This policy is based on the fact that CE classes are self-supporting. Registration fees are used to pay salaries for our instructors as well as for supplies.

Register in person:

COM Continuing Education
 Technical-Vocational Building, Rm T-1475
 1200 Amburn Road, Texas City
 (pay by credit card)

Register by mailing to:

COM Admissions
 1200 Amburn Road
 Texas City, TX 77590-2499
 (pay by check or money order)

Register by calling:

409-933-8586 or
 1-888-258-8859, ext. 8586
 (pay by credit card)

Register online:

Use WebAdvisor
<https://webadvisor.com.edu>

TEXAS ONLINE DEFENSIVE DRIVING AND DRIVER'S EDUCATION

Texas Online Defensive Driving (TEA Course Provider #947) \$29.95 Cost

- Six-hour course
- Accepted by all Texas courts and municipalities for ticket dismissal
- Completers may be eligible for a 10 percent reduction in insurance policy premiums.

Texas Teen Driver Education Course (TEA Course Provider #C2636) \$129.95 Cost

- Has both a parent-taught and virtual-instructor-taught version
- Includes all DPS forms
- Meets all DPS requirements

Adult Driver Education Online (TEA Course Provider #C2636) \$65 Cost

- Guides drivers 18-24 years of age in obtaining their first driver's license
- Completers will be able to bypass the DPS written exam and will only be required to complete the driving portion of the DPS exam.

College of the Mainland and SAFETY-USA are proud to offer three online Texas Education Agency approved driving courses. These courses feature:

- Online text and interactive videos
- Full audio or read-along text for the hearing impaired
- Courses in both English and Spanish
- 24/7 customer phone support
- 24/7 course accessibility with exclusive course memory

Sponsored by SAFETY-USASM

1200 N. Amburn Rd. • Texas City, TX 77591 • 409.938.1211

College of the Mainland

DRIVER EDUCATION STUDENT DRIVER

Ready for class?

College of the Mainland and Safety-USA are proud to partner together to bring you access to all the resources you need to get your driver's license, dismiss a traffic ticket, order DPS records and more!

Teen Driver Education Course

Adult Driver Education Course

Defensive Driving

Registration available online only at <http://tx-dps.com/affiliates/college-of-the-mainland>.
1-888-596-7307

Residential Postal Patron

College of the Mainland[®]
1200 Amburn Road
Texas City, TX 77591

NON-PROFIT
US POSTAGE
PAID
LA MARQUE, TX
PERMIT 54