

Collegiate High School Information Session

Participating Local Education Agencies

Clear Creek ISD
Dickinson ISD
Friendswood ISD
Hitchcock ISD
Odyssey Academy
Santa Fe ISD
Texas City ISD



Private: Abundant Life Christian
School



Mission

It is the mission of the Collegiate High School to prepare high school students to earn college credits in order to achieve their goals by providing a rigorous foundation of academic, interpersonal, and work-readiness skills, leading to further education and employment in high demand occupations in the state and global economies.

CHS at a Glance

Location:

All classes taken at College of the Mainland

Target Students:

Students who want the rigor and challenge of college courses, first generation college students, underserved student populations and students from families of low socio-economic status

Goal:

All students will work toward high school graduation and associate degree requirements simultaneously





CHS at a Glance

Enrollment in public high school campus or as a private school student

Attendance and grades reported through public high school campus or maintained at CHS for private school students

Participation in high school and college extra-curricular activities is encouraged

CHS Graduation Banquet and public high school graduation ceremonies with CHS cords



CHS at a Glance

Students may enroll in more than two college courses per semester. (HB 505)

Students may begin taking college classes as early as their ninth grade year based on their school district's policy. (HB 505)

CHS students have a 40 percent tuition waiver (12 hours approximately \$485).

Textbook lending library.

College Transition classes provide students with activities to learn how to be successful in college and the workplace.

Admissions Requirements

Junior or senior classification
or permission from high
school

Passing all state assessments

College reading level (12.6)

Prefer completion of Algebra

Foundation Graduation Plan



Admissions Requirements

Student:

1. Meet with high school counselor for school procedures
2. Complete online application for COM (ApplyTexas)
3. Pass the TSI Assessment (ACT/SAT)

Practice test site:

<http://tlr.hccs.edu/gcpass/TSIPracticeTests/tsipracticetests.htm>

4. Complete CHS application (www.com.edu/chs)
5. Parents sign and complete recommendation form
6. Teacher, counselor and assistant principal recommendations
7. Write a personal essay
8. Submit completed application to your counselor or to the CHS office
for private school students
9. Meningococcal Meningitis Vaccination required



Admissions Requirements

High School – Varies according to district:

- 1. Provide attendance and discipline records and official transcript**
- 2. Review and approve applications**
- 3. Make recommendations and/or forward to Collegiate High School staff**

Collegiate High School

- 1. Review application and test scores**
- 2. Student and parent interview**
- 3. CHS Staff make the final decision**

INDIVIDUAL GRADUATION PLAN (HB5)

Home Campus:

Graduation Year:

Date:

2/3/2017 3:21 PM

Student Name (ID):

COM Program:

Associate of Arts-General Studies 2016-2017

Career Pathway:

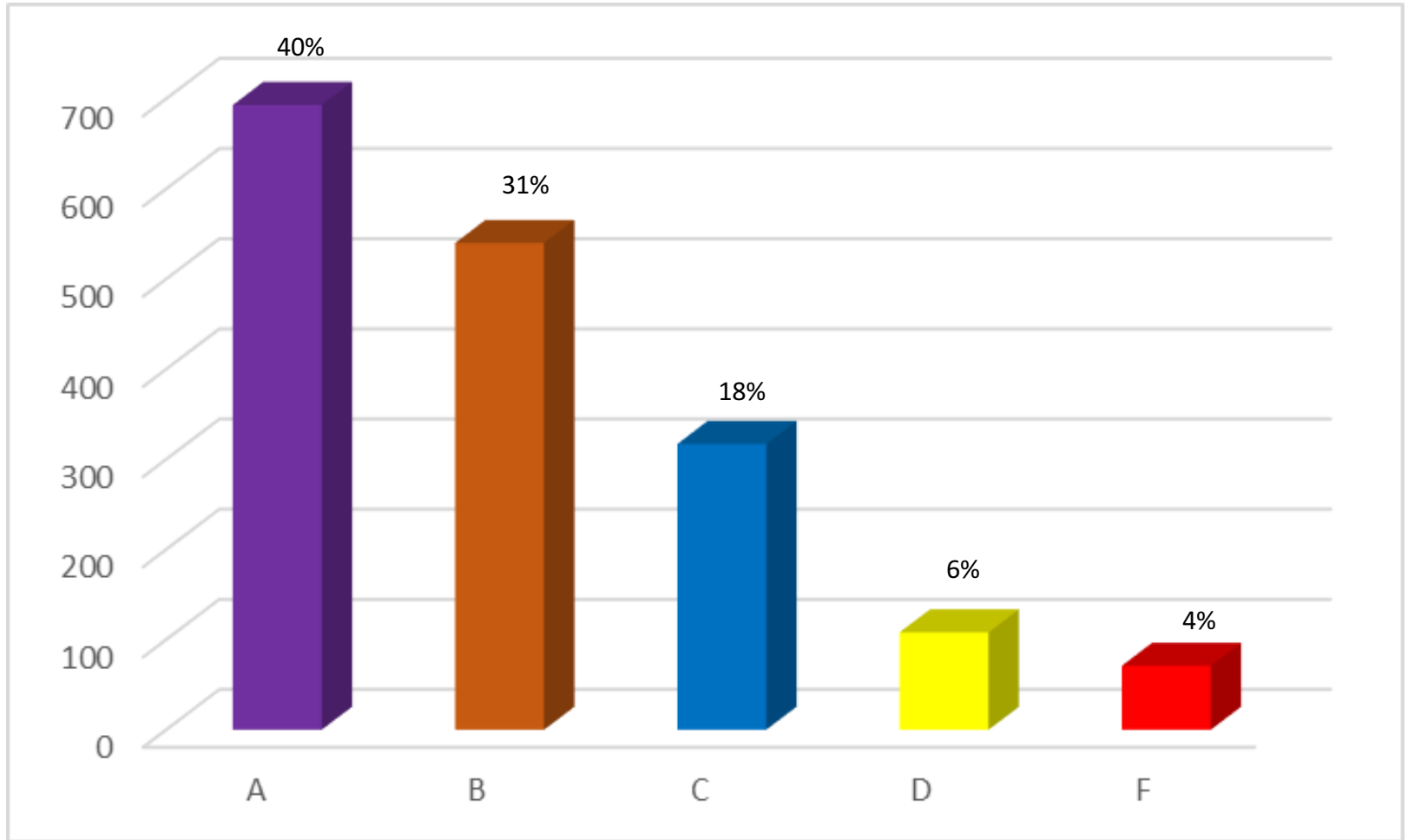
SUBJECT	HIGH SCHOOL								COLLEGE			
	9 th Fall	9 th Spring	10 th Fall	10 th Spring	11 th Fall	11 th Spring	12 th Fall	12 th Spring	FRESHMAN		SOPHOMORE	
English (4) <i>Lang, Phil & Culture</i>	English IA	English IB	English IIA	English IIB	<i>ENGL 1301</i>	<i>ENGL 1302</i>	<i>ENGL Lit</i>	<i>ENGL Lit</i>	<i>ENGL 1301</i>	<i>ENGL 1302</i>		<i>Lang, Phil & Culture ENGL Lit</i>
Math (3)*	Algebra I (J), Geometry A	Geometry B	Algebra IIA	Algebra IIB or <i>MATH 1314</i>	Pre Cal A or <i>MATH</i>	Pre Cal B or <i>MATH</i>			<i>Core Curriculum MATH</i>			
Science (3)*	Chemistry A	Chemistry B	<i>BIOL 1406</i>	<i>BIOL 1407</i>	Physics A	Physics B	<i>Life & Phys Science X4XX</i>	<i>Life & Phys Science X4XX</i>			<i>Life & Phys Science X4XX</i>	<i>Life & Phys Science X4XX</i>
Social Studies (2.5)	World Geography A or World History A	World Geography B or World History B	<i>HIST 1301</i>	<i>HIST 1302</i>	<i>GOVT 2305</i>				<i>HIST 1301</i>	<i>HIST 1302, GOVT 2305</i>	<i>GOVT 2306</i>	
Economics (0.5) <i>Soc/Beh Sci</i>						Economics or <i>ECON 2301 or 2302</i>				<i>Soc/Beh Sci (ECON, PSYC, SOCI)</i>		
Languages or Computer Science (2)			<i>SPAN 1411, SPAN 1412</i>									
Fine Arts (1)						<i>Creative Arts Elective X3XX</i>					<i>Creative Arts Elective X3XX</i>	
Physical Education (1)					<i>PHED X1XX</i>	<i>PHED X1XX</i>						<i>PHED 1164</i>
<i>Psychology for Success (Elective)</i>	<i>EDUC 1300</i>								<i>PSYC or EDUC 1300</i>			
Speech/Health (Elective)					<i>SPCH 1315 or 1318</i>				<i>SPCH 1315 or 1318</i>			
Electives with Endorsements (9)* Multi Dis.		College Transitions	Path College & Career, <i>Elective X3XX</i>	Path College & Career, <i>Elective X3XX</i>	Transitions	Transitions, <i>Elective X3XX</i>	Transitions, <i>Elective X3XX</i>	Transitions, <i>Elective X3XX</i>		<i>ENGL Lit</i>	<i>Elective X3XX, Elective X3XX</i>	<i>Elective X3XX, Elective X3XX</i>
# HS Credits (26)												
# College Semester Hours									15	15	16	14

*At least four credits of Math and Science are recommended for university admission. With one additional math and science credit only 7 credits of Electives with Endorsements are required.

Sample Schedule

STUDENT NAME:						
	Monday	Tuesday	Wednesday	Thursday	Friday	
7:30-7:50						
8:00-8:20	Physics	ENGL 1301	Physics	ENGL 1301	8:00-9:00	Physics
8:30-8:50					9:05-10:05	English Supplement
9:00-9:20					10:10-11:10	Money Matters
9:30-9:50	Pre Cal					
10:00-10:20						
10:30-10:50						
11:00-11:20	Free	HIST 1301	Free	HIST 1301	11:15-12:15	Nu Psi
11:30-11:50					12:20-1:20	CHS Advisory
12:00-12:20						
12:30-12:50	CHS Success Class		CHS Success Class			
1:00-1:20						
1:30-1:50	SPCH 1315	BIOL 1406	SPCH 1315	BIOL 1406		
2:00-2:20						
2:30-2:50						
3:00-3:20						
3:30-3:50						
4:00-4:20						

2016-2017 College Grades



Other Components

- College Workshops/Seminars
- Employability Skills
- Portfolios
- Senior Mentoring
- CHS Success Course
- Extra-curricular activities
- University, educational, community field trips





Critical Success Factors

High Academic Standards

Maturity

Self-Motivation


Responsibility

Goal Oriented

Nu Psi



- D'Feet Run/Walk
- Toy drives
- Food drives
- Relay for Life
- Recycling



“Allowing our students to complete college work while earning their high school diploma gives them the confidence that they can be successful at life after high school, whether they choose to complete a four-year degree or begin their career immediately. This program is also especially beneficial to families because students can earn college credit at a fraction of the cost.”

**~Vicki Mims, Superintendent
Dickinson ISD**





Contact Information:

Sandi Belcher, Director

409-933-8158

Ramona Wadding, Administrative Assistant

409-933-8169

CHS Application:

www.com.edu/chs (link is towards the bottom on left side)

TSI Practice Test Site:

<http://tlr.hccs.edu/gcpass/TSIPracticeTests/tsipracticetests.htm>