



★ Front Row ★

Jan. 29 - Feb. 15, 2015

THE BIGGEST LI'L THEATRE IN TEXAS • A Texas Tradition Since 1971 • Circulation 8,000

College of the Mainland Community Theatre • 1200 Amburn Road • Texas City, Texas 77591 • www.com.edu/theatre

“Always ... Patsy Cline” Returns to COM by Popular Demand!

“Always...Patsy Cline” first appeared on the COM stage 10 years ago and our audiences were swept away by the glorious return of one of America’s most cherished recording artists. That original production broke all box-office records and had subscribers begging for a return engagement every year since. The happy day has finally arrived! College of the Mainland Community Theatre welcomes Patsy Cline back for her triumphant return on Thursday, Jan. 29 at 8 p.m., continuing through February 15. It’s a “song-filled valentine!”

“Always...Patsy Cline” has been a smash-hit wherever it has been performed, thanks to a perfect combination of folksy humor, genuine poignancy and glorious music. The show is based on the true story of Patsy Cline’s friendship with Houston housewife Louise Seger. In 1961, when Patsy Cline (played by Amber Bennett of Alvin) came to Houston for a show, Louise (played by Patty Talley of Galveston) and several buddies arrived 90 minutes early and, by coincidence, met Cline who was traveling alone. The two women struck up a friendship that culminated in Patsy spending the night at Louise’s house—a friendship that lasted until Cline’s untimely death in a plane crash in 1963.

The relationship between the two women, which began as fan worship, evolved into one of mutual respect and genuine fondness. They exchanged letters and phone calls for two years after their initial meeting and it is Louise’s hilarious recounting of their time together that provides much of the plot of the show. The real attraction, however, may just be the music as Patsy Cline sings over two dozen of her evergreen classics, including “Crazy,” “She’s Got You,” “Walkin’ After Midnight,” “I Fall to Pieces,” “Sweet Dreams” and many more.



“Always...Patsy Cline” runs from Jan. 29 through Feb. 15. Call the Theater Box Office for tickets or information at 888-258-8859, ext. 8345 or 409-933-8345 or online at www.com.edu/theater.

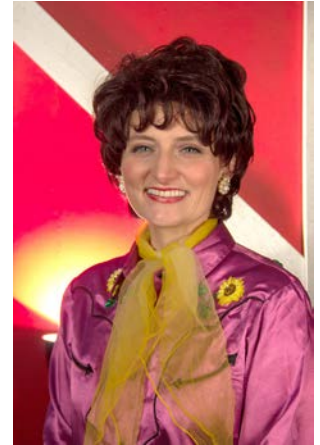
Inside:

“Always...Patsy Cline” Cast	2
Callboard	3
Like Us	5
Volunteers Needed	5
Online Ticket Sales	5
Ticket Information	5
Season Lineup	6
Audition Flier	7

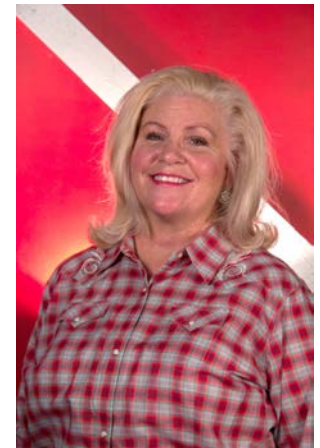


Always ... Patsy Cline Cast

Amber Bennett (Patsy Cline) is so honored, excited and humbled to be a part of "Always...Patsy Cline." Her other favorite roles shows at COM include "Prelude to a Kiss" (Rita), "Bill W. and Dr. Bob" (Lois), "Shout!" (Green Girl), "Chicago" (Roxie), "9 to 5" (Violet), "My Funny Valentine," "Red Herring" (Maggie), "Drowning on Dry Land" (Linzi) and "A Midsummer Night's Dream" (Titania). Some other favorite shows include "Guys and Dolls" (Sarah Brown), "Into the Woods" (Witch), "Gypsy" (Louise) and "Side Show" (Bearded Lady). Amber has a BFA from The New School University in New York City and a M.Ed. in Educational Leadership from Lamar University. She spends her days as an academic design coach in Alvin ISD. She also enjoys singing in a band with her dad and four other old guys called Amber and The Old Rascals. She hopes these classic Patsy Cline tunes bring back great memories!



Patty Talley (Louise Seger) is thankful and elated to be able to check off one more from her list of favorite dream roles. Previously, she has checked off "Young Frankenstein" (Frau Blucher), "Avenue Q" (Lucy), "Steel Magnolias" (M'Lynn), "Nunsense" (Reverend Mother and Sister Mary Amnesia, from two separate productions) and "Picnic" (Rosemary). Patty believes that of her education and training in theater, her most influential and applicable experience has been her summer spent at La Mama's International Symposium for Directors/Theatre-makers in Umbria, Italy. Patty dedicates her performance to the "Louise" in her own life—her Aunt Pat, for her love, support, encouragement and for being so much fun!





Always ... Patsy Cline

CALLBOARD

www.com.edu/theatre

"Always ... Patsy Cline"

Sunday	Mon.	Tues.	Wed.	Thursday	Friday	Saturday		
			<i>Jan.</i>	<i>Always... Patsy Cline</i> 8 p.m.	29 <i>Always... Patsy Cline</i> 8 p.m.	30 <i>Always... Patsy Cline</i> 8 p.m.	31 <i>Always... Patsy Cline</i> 8 p.m.	
<i>Always... Patsy Cline</i> 2:30 p.m.	1	<i>Feb.</i>		<i>Always... Patsy Cline</i> 8 p.m.	5	<i>Always... Patsy Cline</i> 8 p.m.	6 <i>Always... Patsy Cline</i> 8 p.m.	7
<i>Always... Patsy Cline</i> 2:30 p.m.	8			<i>Always... Patsy Cline</i> 8 p.m.	12	<i>Always... Patsy Cline</i> 8 p.m.	13 <i>Always... Patsy Cline</i> 8 p.m.	14
<i>Always... Patsy Cline</i> 2:30 p.m.	15							





Always ... Patsy Cline





Always ... Patsy Cline



We want you to Like us!

Really Like us!

College of the Mainland Community Theatre has finally bowed to teenage peer pressure and launched its very own Facebook page. Now we're allowed to sit with the cool kids. You should sit with the cool kids, too, and click "Like" on our page. We won't clutter your news feed with a bunch of junk, but we will keep you posted on shows, auditions, special events and any announcements that directly affect the audience/actor experience.

So give us a click at <https://www.facebook.com/the-biggestlittletheatre>. It'll help us expand our little theater's visibility and give you a coveted space at the lunch table next to the varsity quarterback and the homecoming queen. Everybody's doing it.

COM Community Theatre Ticket Information

FOR TICKETS

409-933-8345 or 1-888-258-8859, ext. 8345

TICKET OFFICE HOURS

10 a.m. - 4 p.m. Tuesday-Friday
with extended hours on performance days.

TELEPHONE RESERVATION

during regular office hours

TICKET PRICES

Sections: "A"/\$23, "B"/\$18, "C"/\$13
Discount for students and senior citizens.
Children must be four years old to attend.

www.com.edu/theatre



We Need Your Help!

College of the Mainland Community Theatre is always in need of backstage help for the performances. If you've ever had an interest in seeing how a play really works and don't mind making some new friends and having some fun, we'd love to add you to our list of potential volunteers. You don't need any experience (we'll teach you what you need to know!), just availability for the performances and a few rehearsals. If you might be interested and available to work on any of our shows this year, please contact our Technical Director, Curt Meyer, at 409-933-8371. *Join us!*

Online Ticket Sales

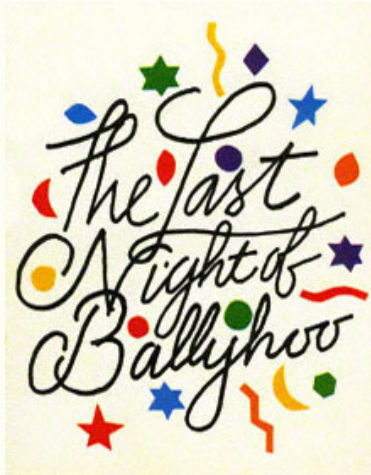
COM Community Theatre now offers online ticket sales right from the theater's home page. Pick your date, pick your section, charge your credit card through our secure payment system and the tickets are yours – no waiting! Visit www.com.edu/theatre. Then just look for the big green *Buy Tickets Online* button, click it and you're off and running.



Always ... Patsy Cline

Don't miss out next production ...

The charming Southern comedy...



The Last Night of Ballyhoo

by Pulitzer Prize-Winner Alfred Uhry

Directed by Steve Garfinkel

April 9 – 26, 2015

**Thursdays – Saturdays at 8 p.m.
and Sundays at 2:30 p.m.**

For reservations, call the Box Office at 888-258-8859, ext. 8345
or 409-933-8345, or purchase tickets online at www.com.edu/theatre.

**Join us for an exciting new season of thrills, laughs,
touching moments and captivating theater!**

COM Community Theatre's 2014–2015 Season

"Always ... Patsy Cline" created by Ted Swindley

"The Last Night of Ballyhoo" by Alfred Uhry

"The Drawer Boy" by Michael Healey

"Women on the Verge of a Nervous Breakdown" by David Yazbek and Jeffrey Lane

College of the Mainland Community Theatre

★ The Biggest Li'l Theatre in Texas ★

Open Auditions for

The Last Night of Ballyhoo

by Pulitzer Prize-winner Alfred Uhry

Directed by Steve Garfinkel

Sunday, Feb. 8 at 7 p.m.

Monday, Feb. 9 at 7 p.m.

ABOUT THE PLAY: "The Last Night of Ballyhoo" takes place in Atlanta, Georgia, in December of 1939. *Gone with the Wind* is having its world premiere and Hitler is invading Poland, but Atlanta's elitist German Jews are much more concerned with who is going to Ballyhoo, the social event of the season. Especially concerned is the Freitag family: bachelor Adolph, his widowed sister, Beulah (Boo) Levy, and their also widowed sister-in-law, Reba. Boo is determined to have her awkward, unpopular daughter, Lala, attend Ballyhoo, believing it will be Lala's last chance to find a socially acceptable husband. Adolph brings his new assistant, Joe Farkas, home for dinner. Joe is Brooklyn born and bred, and furthermore is of Eastern European heritage—several social rungs below the Freitags, in Beulah's opinion. Will Sunny and Joe avoid the land mines of prejudice that stand in their way? Will Lala ever get to Ballyhoo? The family gets pulled apart and then mended, with plenty of comedy, romance and revelations along the way. Events take several unexpected turns as the characters face where they come from and are forced to deal with who they really are. Winner of the 1997 Tony Award for Best Play.

ABOUT THE AUDITIONS: We will do cold readings from the script; no monologue required. All listed ages are approximate not hard cutoffs. Except as noted, the characters speak with gentrified southern accents a la *Gone with the Wind*.

ALL ROLES ARE OPEN:

ADOLPH FREITAG (male, 40s-50s) Described as a "pillar of the business community" with a "soft body, hard mind." A southern gentleman with little connection to his Jewish heritage. Avuncular, generous and patient from years of accommodating his family.

BOO LEVY (female, 40s-50s) Adolph's older sister, Lala's mother, Sunny's aunt. A serious, forceful woman with Old South priorities such as marrying off her daughter to a man of proper stock. A tough nut to crack.

REBA FREITAG (female, 40s-50s) Adolph's sister-in-law, Lala's aunt, Sunny's mother. Described as "a pretty, vague woman, not quite in synch with everybody else." Reba is good-natured and well-intentioned if sometimes off in her own little world.

LALA LEVY (female, 20s) Described as "an unsure, awkward young woman" with a "slightly desperate air about her." A breathless daydreamer with more than her share of naiveté.

SUNNY FRIETAG (female, 20s) Described as "attractive" and "reserved." A bright college student who, in contrast to Lala, evinces a poised maturity. Her cautious romantic involvement with Joe creates the trigger for the whole family's reevaluation of their priorities.

JOE FARKAS (male, 20s) Described as a "vigorous young man" with a New York accent. Bright and articulate with an earthy street-smarts hired by Adolph. The "wrong" kind of Jew for class-conscious Boo, Joe's determined attempts to get through to Sunny ultimate shake up the whole family.

PEACHY WEIL (male, 20s) Described as "self-important," from one of Louisiana's "best" Jewish families. Boo's preferred choice of matches for Lala, who hangs breathlessly on Peachy's every bombastic, arrogant word.

REHEARSALS: Rehearsals begin on Monday, March 2 and continue Mondays through Fridays, generally running 7 – 10 p.m. You may not be scheduled for every rehearsal or for the full evening even when called.

PERFORMANCES: April 9 – 26, 2015, Thursdays through Saturdays at 8 p.m. and Sundays at 2:30 pm.

For more information, please contact Mark Adams at 888-258-8859, ext. 8544 or 409-933-8544 or madams@com.edu.