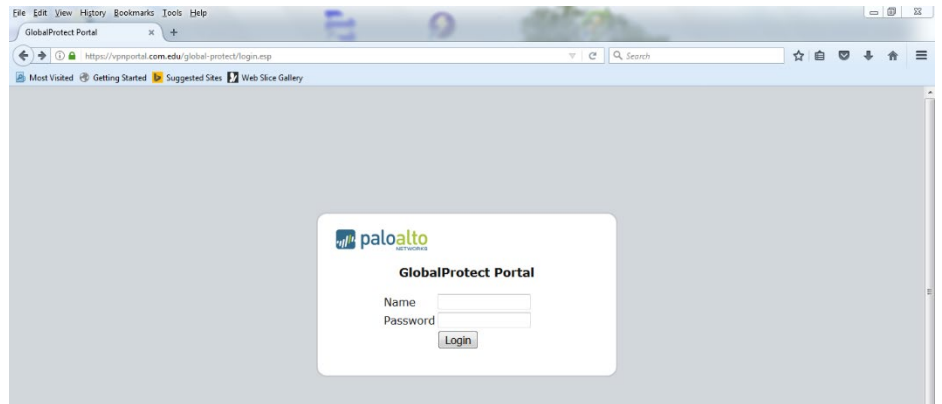
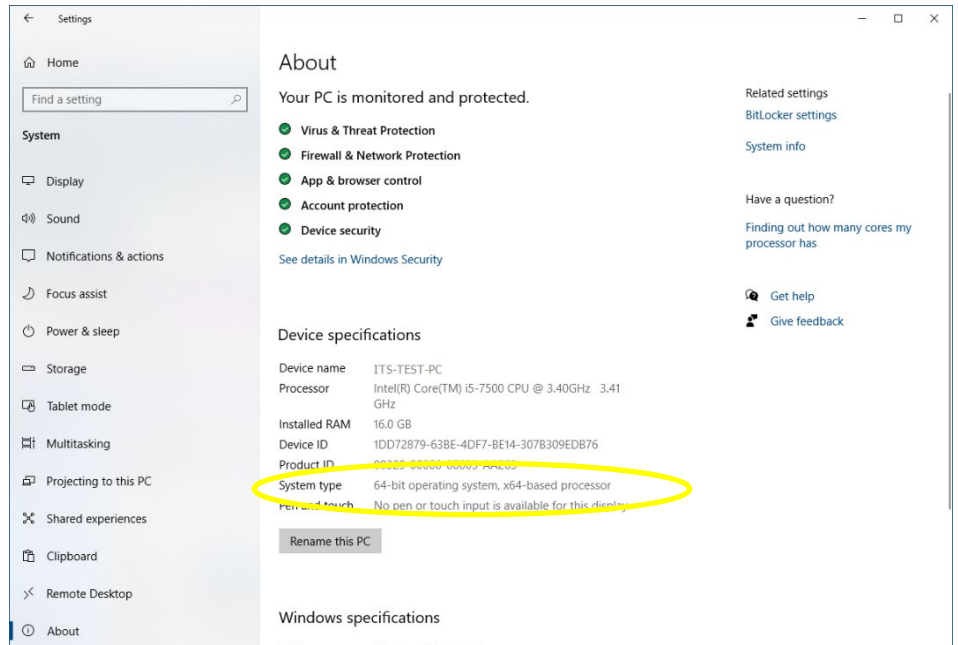


# Global Protect VPN setup instructions:

Open a web browser and navigate to <https://vpnportal.com.edu>. Make sure you include the **s** at the end of **http**, or you will not be able to connect. Enter your COM username and password.



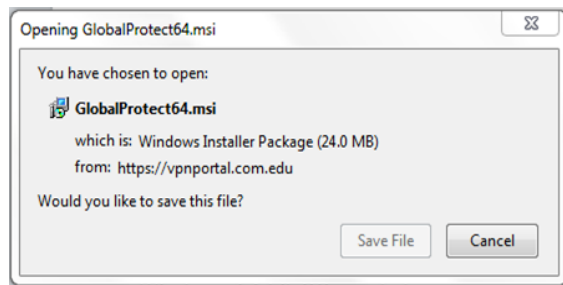
You will need to download the appropriate client for your computer's operating system. If you are unsure of your OS, check the system properties to verify whether you have a 32 or 64 bit operating system. You can do this by right-clicking on My Computer and selecting properties, or by going to **Settings > System > About**.



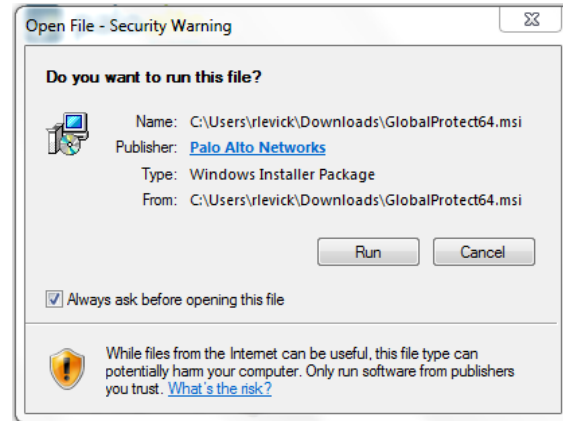
Select the applicable version to download.



Save the installation file to your computer if prompted.



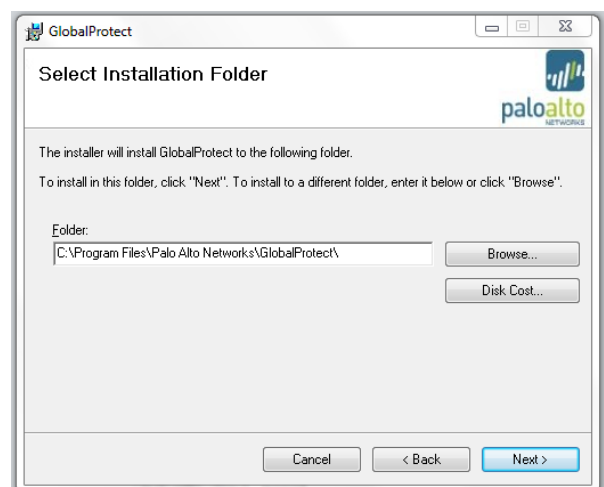
Run the installation file.



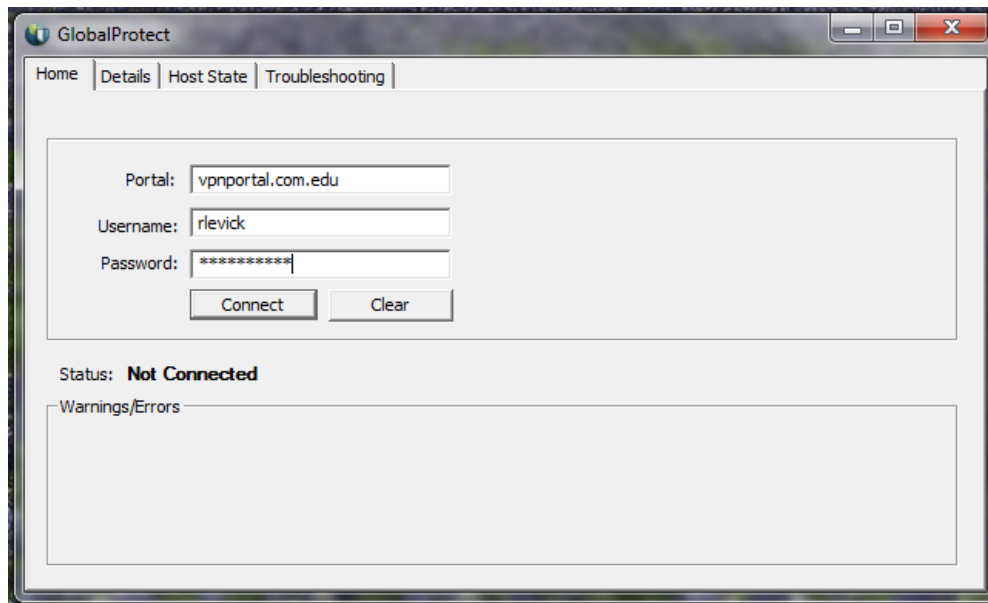
Select Next to begin the installation.



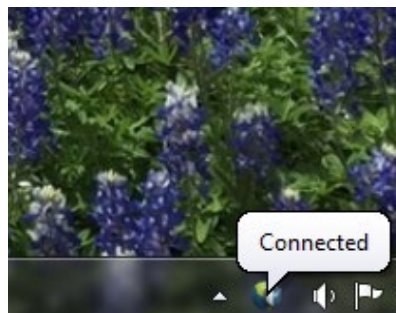
Select the default installation location by clicking Next. Then close the installer.



Enter the portal address, username, and network password. Click on the connect button.



You may notice a connected message on the taskbar at the bottom right of the screen. To disconnect your VPN connection, click the small triangle on the taskbar at the bottom right, right-click on the global connect icon, and select disconnect. For subsequent connections, right-click on the global connect icon and select connect.



If you are still having issues, please contact the Helpdesk at 409-933-8302 or by sending an email to [helpdesk@com.edu](mailto:helpdesk@com.edu)