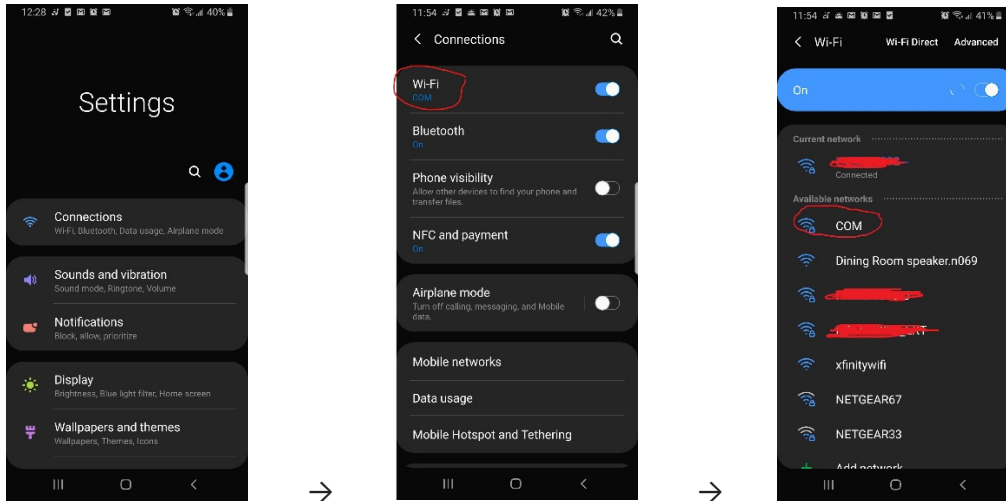


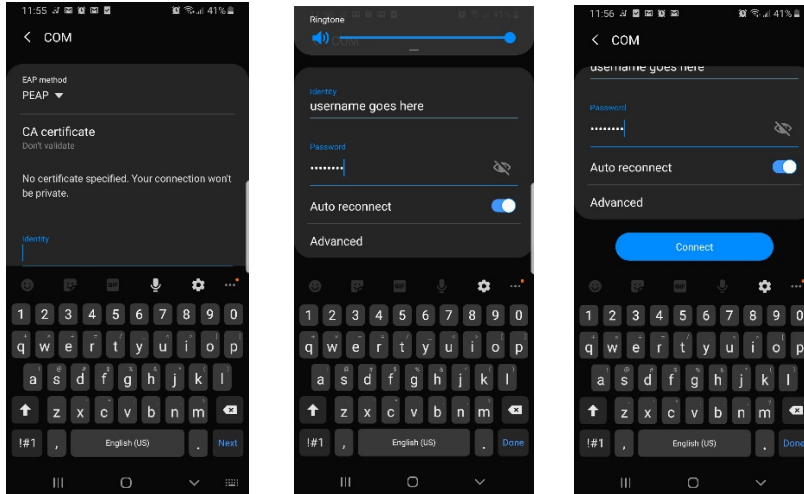
CONNECT TO COM WITH YOUR MOBILE DEVICE

Android Devices

1. On your device, Go to Settings->Connections->Wi-Fi->COM



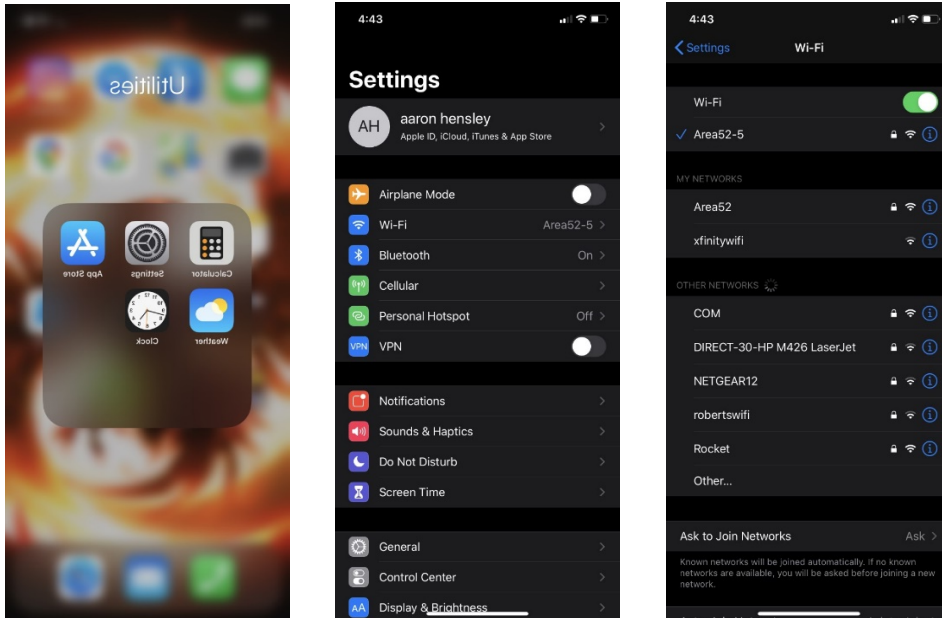
2. For EAP method, choose "PEAP". For CA certificate, choose "Don't validate". Input your username and password and click connect.



CONNECT TO COM WITH YOUR MOBILE DEVICE

Apple Devices

1. On your device, Go to Settings ->WiFi ->Choose "COM" from the networks list



2. Enter your Username and Password at the prompt, then tap Trust on the certificate

